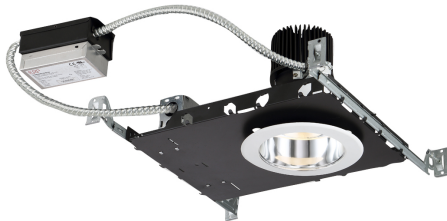


4NC-16, 4-INCH NEW CONSTR 16W LED HSING

Product Details

| | | |
|-------------|---|----------|
| Item No. | : | 4NC-16 |
| Length | : | 13.81" |
| Width | : | 7.63" |
| Diameter | : | 5.63" |
| Height | : | 6.19" |
| Est. Weight | : | 5.46 lbs |
| Approval | : | |



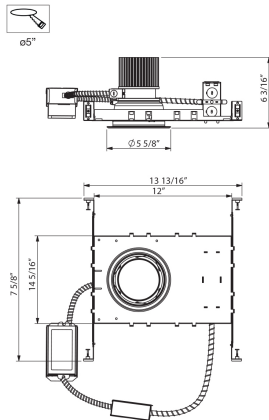
BULB DETAILS

| | | |
|---------------|---|--------|
| No. of Bulbs | : | 1 |
| Bulb Type | : | LED |
| Bulb Wattage | : | 16W |
| Bulb Socket | : | LED |
| Dimmable | : | Yes |
| Lumens | : | 1200lm |
| CRI | : | 90+ |
| Bulb Included | : | Yes |

Options Available

| ITEM NO. | FINISH | SHADE |
|----------|--------|-------|
| 4NC-16 | | |

Available Kelvin: -30 3000K/-35 3500K/-40 4000K Available Beam Angel: -2 Narrow 20 degrees /-4 Wide 40 degrees Available Driver: -1 120V/-2 277V/-3 347V Available Dimming: -L 0-10V Dimming/-T Triac Dimming Available Reflector: -S Semi-Specular/-W White/-F Frosted Lens/-X Wall Washer Available Trim: -WP White Plastic/-BP Black Plastic/-SN Satin Nickel Available Trim: -WM White Metal/-BM Black Metal



TECHNICAL DETAILS

| | | |
|----------|---|----|
| Cut Hole | : | 5" |
|----------|---|----|

PROJECT INFORMATION

Job Name: Date: Type:

Comments: