

LED Lamps

ProLED Plug In Series

- Hybrid (Type A + Type B) Options Available
- Omni-Directional Light Distribution on Multiple Skus
- Color Selectable 3000K-3500K-4000K Models
- DLC 5.1 Options



Specifications

Description

Halco's LED plug in family offers a full line of products to meet the needs of any application. Halco's plug in line offers color selectable hybrid, high lumen output (vertical or horizontal), and omni-directional options that are available in a variety of color temperatures and lumen output ranges. These efficient, versatile, and long lasting LED plug in lamps are the perfect replacement option for fluorescent double or triple biax products.

Construction

- White plastic housing
- Frosted plastic lens
- 150° and 270° degree rotatable housing on horizontal models

Certifications

- UL listed and UL Classified (SKU dependant)
- UL damp location rated
- DLC 5.1 standard
- IP20
- NSF
- FCC
- RoHS

Performance

- 3000K, 3500K, 4000K, and 5000K options available
- Efficacy: 112-139 lumens per watt
- Dimmable options available
- Omni-directional SKUs available for 360° degree beam angle
- L70: 50,000 Hours
- 5 Year warranty
- G24q 4-pin and G24d 2-pin bases
- Operating temperature: -20C to 45C

Applications

- Commerical
- Retail
- Hospitality
- Office
- Medical

ProLED Plug In Series

Ordering Logic

Shape/Wattage/Direction		CRI/CCT	Type	Pins	Technology	Dimmable
9 = 9 Watts 9 = 8.5 Watts 10 = 9.5 Watts O = Omni V = Vertical H = Horizontal 9 = 9 Watts 9 = 8.5 Watts 10 = 9.5 Watts		8 = ≥ 82 35 = 3500K 40 = 4000K 50 = 5000K CS = Color Selectable 3000K-3500K-4000K	HYBE = Hybrid Type A (Electronic Ballast Compatible) & Type B (Ballast Bypass) HYBM = Hybrid Type A (Magnetic Ballast Compatible) & Type B (Ballast Bypass) BCO = Ballast Compatible BYP = Ballast Bypass	2P = 2 PIN (Compatible with G24d Bases) 4P = 4 PIN (Compatible with G24q Bases)	LED	Blank = Non-Dimmable D = Dimmable

Ordering Information

Product SKU	Product Code	Product Description
82144	PL100-835-HYBE-4P-LED-D	9.5 WATT OMNI DIRECTIONAL LED 4-PIN PLUG IN 3500K HYBRID -TYPE A ELECTRONIC BALLAST + TYPE B, DIMMABLE (TYPE A ONLY)
82145	PL100-840-HYBE-4P-LED-D	9.5 WATT OMNI DIRECTIONAL LED 4-PIN PLUG IN 4000K HYBRID -TYPE A ELECTRONIC BALLAST + TYPE B, DIMMABLE (TYPE A ONLY)
82146	PL100-850-HYBE-4P-LED-D	9.5 WATT OMNI DIRECTIONAL LED 4-PIN PLUG IN 5000K HYBRID -TYPE A ELECTRONIC BALLAST + TYPE B, DIMMABLE (TYPE A ONLY)
82147	PL90-835-HYBM-2P-LED	9 WATT OMNI DIRECTIONAL LED 2-PIN PLUG IN 3500K HYBRID -TYPE A MAGNETIC BALLAST + TYPE B, NON-DIMMABLE
82148	PL90-840-HYBM-2P-LED	9 WATT OMNI DIRECTIONAL LED 2-PIN PLUG IN 4000K HYBRID -TYPE A MAGNETIC BALLAST + TYPE B, NON-DIMMABLE
82149	PL90-850-HYBM-2P-LED	9 WATT OMNI DIRECTIONAL LED 2-PIN PLUG IN 5000K HYBRID -TYPE A MAGNETIC BALLAST + TYPE B, NON-DIMMABLE
82162	PL9H-8CS-HYBM-2P-LED	8.5 WATT HORIZONTAL LED 2-PIN PLUG IN CCT SELECTABLE 3000K-3500K-4000K HYBRID -TYPE A MAGNETIC BALLAST + TYPE B, NON-DIMMABLE
82163	PL9V-8CS-HYBM-2P-LED	8.5 WATT VERTICAL LED 2-PIN PLUG IN CCT SELECTABLE 3000K-3500K-4000K HYBRID -TYPE A MAGNETIC BALLAST + TYPE B, NON-DIMMABLE
82150	PLT15H-835-BCO-4P-LED-D	14.5 HORIZONTAL LED 4-PIN PLUG IN 3500K BALLAST COMPATIBLE TYPE A DIMMABLE
82151	PLT15H-840-BCO-4P-LED-D	14.5 HORIZONTAL LED 4-PIN PLUG IN 4000K BALLAST COMPATIBLE TYPE A DIMMABLE
82152	PLT15H-850-BCO-4P-LED-D	14.5 HORIZONTAL LED 4-PIN PLUG IN 5000K BALLAST COMPATIBLE TYPE A DIMMABLE
82153	PLT17V-835-BCO-4P-LED-D	17 VERTICAL LED 4-PIN PLUG IN 3500K BALLAST COMPATIBLE TYPE A DIMMABLE
82154	PLT17V-840-BCO-4P-LED-D	17 VERTICAL LED 4-PIN PLUG IN 4000K BALLAST COMPATIBLE TYPE A DIMMABLE
82155	PLT17V-850-BCO-4P-LED-D	17 VERTICAL LED 4-PIN PLUG IN 5000K BALLAST COMPATIBLE TYPE A DIMMABLE
82156	PLT16H-835-BYP-2P-LED	15.5 HORIZONTAL LED 2-PIN PLUG IN 3500K BALLAST BYPASS TYPE B NON-DIMMABLE
82157	PLT16H-840-BYP-2P-LED	15.5 HORIZONTAL LED 2-PIN PLUG IN 4000K BALLAST BYPASS TYPE B NON-DIMMABLE
82158	PLT16H-850-BYP-2P-LED	15.5 HORIZONTAL LED 2-PIN PLUG IN 5000K BALLAST BYPASS TYPE B NON-DIMMABLE
82159	PLT17V-835-BYP-2P-LED	16.5 VERTICAL LED 2-PIN PLUG IN 3500K BALLAST BYPASS TYPE B NON-DIMMABLE
82160	PLT17V-840-BYP-2P-LED	16.5 VERTICAL LED 2-PIN PLUG IN 4000K BALLAST BYPASS TYPE B NON-DIMMABLE
82161	PLT17V-850-BYP-2P-LED	16.5 VERTICAL LED 2-PIN PLUG IN 5000K BALLAST BYPASS TYPE B NON-DIMMABLE

ProLED Plug In Series

Performance Table

SKU	Product Code	Wattage	3000K		3500K		4000K		5000K	
			Lumen Output (lm)	Efficacy (lm/W)	Lumen Output (lm)	Efficacy (lm/W)	Lumen Output (lm)	Efficacy (lm/W)	Lumen Output (lm)	Efficacy (lm/W)
82144	PL100-835-HYBE-4P-LED-D	9.5W			1250	132				
82145	PL100-840-HYBE-4P-LED-D	9.5W					1250	132		
82146	PL100-850-HYBE-4P-LED-D	9.5W							1250	132
82147	PL90-835-HYBM-2P-LED	9W			1250	139				
82148	PL90-840-HYBM-2P-LED	9W					1250	139		
82149	PL90-850-HYBM-2P-LED	9W							1250	139
82162	PL9H-8CS-HYBM-2P-LED	8.5W	960	113	1020	120	1050	124		
82163	PL9V-8CS-HYBM-2P-LED	8.5W	1100	129	1120	132	1150	135		
82150	PLT15H-835-BCO-4P-LED-D	14.5W			1800	124				
82151	PLT15H-840-BCO-4P-LED-D	14.5W					1800	124		
82152	PLT15H-850-BCO-4P-LED-D	14.5W							1800	124
82153	PLT17V-835-BCO-4P-LED-D	17W			1900	112				
82154	PLT17V-840-BCO-4P-LED-D	17W					1950	115		
82155	PLT17V-850-BCO-4P-LED-D	17W							2000	118
82156	PLT16H-835-BYP-2P-LED	15.5W			1800	116				
82157	PLT16H-840-BYP-2P-LED	15.5W					1800	116		
82158	PLT16H-850-BYP-2P-LED	15.5W							1800	116
82159	PLT17V-835-BYP-2P-LED	16.5W			1850	112				
82160	PLT17V-840-BYP-2P-LED	16.5W					1850	112		
82161	PLT17V-850-BYP-2P-LED	16.5W							1850	112

*Efficacy is based on base wattage and does not take into account any energy consumption from a ballast in Type A (BCO) applications

ProLED Plug In Series

Specification Table

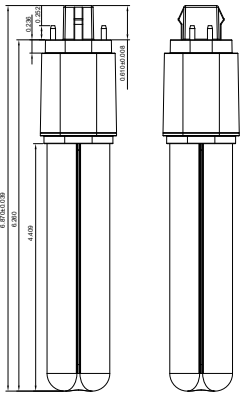
SKU	Voltage	Amperage	Power Factor	CCT (Kelvin)	L70 Life-time (Hrs)	CRI	Dimming	Min Temp	Max Temp	Housing	Lens	Warranty	Certifications
82144	120-277 VAC	0.0325 - 0.075	0.9	3500	50,000	≥80	Yes Type A Mode	-20 C	45 C	Polycarbonate and Aluminum	Frosted	5	UL, UL DAMP LOCATION RATED, IP20, ROHS
82145	120-277 VAC	0.0325 - 0.075	0.9	4000	50,000	≥80	Yes Type A Mode	-20 C	45 C	Polycarbonate and Aluminum	Frosted	5	
82146	120-277 VAC	0.0325 - 0.075	0.9	5000	50,000	≥80	Yes Type A Mode	-20 C	45 C	Polycarbonate and Aluminum	Frosted	5	
82147	120-277 VAC	0.0325 - 0.075	0.9	3500	50,000	≥80	NO	-20 C	45 C	Polycarbonate and Aluminum	Frosted	5	
82148	120-277 VAC	0.0325 - 0.075	0.9	4000	50,000	≥80	NO	-20 C	45 C	Polycarbonate and Aluminum	Frosted	5	
82149	120-277 VAC	0.0325 - 0.075	0.9	5000	50,000	≥80	NO	-20 C	45 C	Polycarbonate and Aluminum	Frosted	5	
82162	120-277 VAC	0.0306 - 0.0708	0.9	3000/3500/4000	50,000	≥80	NO	-20 C	45 C	Polycarbonate and Aluminum	Frosted	5	
82163	120-277 VAC	0.0306 - 0.0708	0.9	3000/3500/4000	50,000	≥80	NO	-20 C	45 C	Polycarbonate and Aluminum	Frosted	5	
82150	120-277 VAC	0.052 - 0.121	0.9	3500	50,000	≥80	Yes Type A Mode	-20 C	45 C	Polycarbonate and Aluminum	Frosted	5	UL, UL DAMP LOCATION RATED, IP20, ROHS, DLC 5.1
82151	120-277 VAC	0.052 - 0.121	0.9	4000	50,000	≥80	Yes Type A Mode	-20 C	45 C	Polycarbonate and Aluminum	Frosted	5	
82152	120-277 VAC	0.052 - 0.121	0.9	5000	50,000	≥80	Yes Type A Mode	-20 C	45 C	Polycarbonate and Aluminum	Frosted	5	
82153	120-277 VAC	0.061 - 0.125	0.9	3500	50,000	≥80	Yes Type A Mode	-20 C	45 C	Polycarbonate and Aluminum	Frosted	5	
82154	120-277 VAC	0.061 - 0.125	0.9	4000	50,000	≥80	Yes Type A Mode	-20 C	45 C	Polycarbonate and Aluminum	Frosted	5	
82155	120-277 VAC	0.061 - 0.125	0.9	5000	50,000	≥80	Yes Type A Mode	-20 C	45 C	Polycarbonate and Aluminum	Frosted	5	
82156	120-277 VAC	0.056 - 0.130	0.9	3500	50,000	≥80	NO	-20 C	45 C	Polycarbonate and Aluminum	Frosted	5	UL, UL DAMP LOCATION RATED, IP20, ROHS
82157	120-277 VAC	0.056 - 0.130	0.9	4000	50,000	≥80	NO	-20 C	45 C	Polycarbonate and Aluminum	Frosted	5	
82158	120-277 VAC	0.056 - 0.130	0.9	5000	50,000	≥80	NO	-20 C	45 C	Polycarbonate and Aluminum	Frosted	5	
82159	120-277 VAC	0.060 - 0.140	0.9	3500	50,000	≥80	NO	-20 C	45 C	Polycarbonate and Aluminum	Frosted	5	
82160	120-277 VAC	0.060 - 0.140	0.9	4000	50,000	≥80	NO	-20 C	45 C	Polycarbonate and Aluminum	Frosted	5	
82161	120-277 VAC	0.060 - 0.140	0.9	5000	50,000	≥80	NO	-20 C	45 C	Polycarbonate and Aluminum	Frosted	5	

LED Lamps

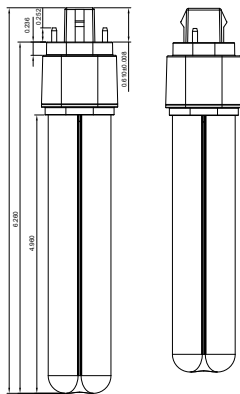
ProLED Plug In Series

Dimensions

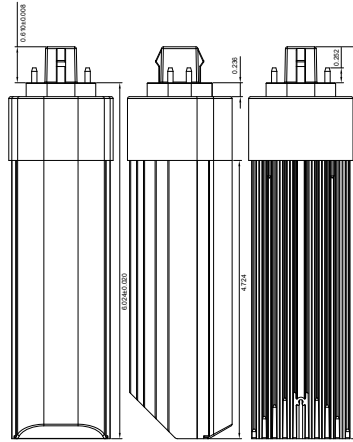
82144, 82145, 82146



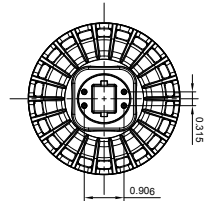
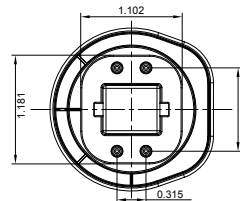
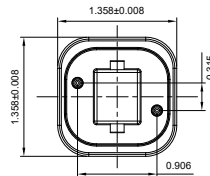
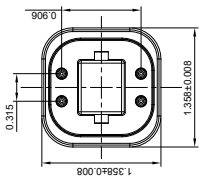
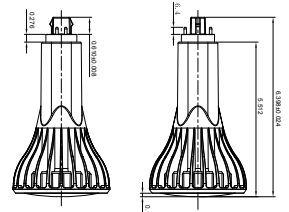
82147, 82148, 82149



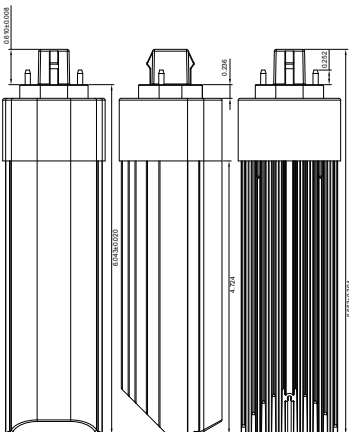
82150, 82151, 82152



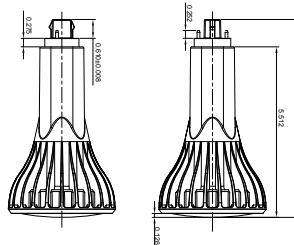
82153, 82154, 82155



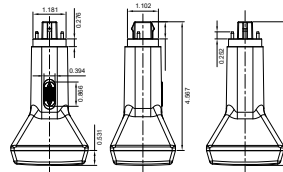
82156, 82157, 82158



82159



82162



82163

