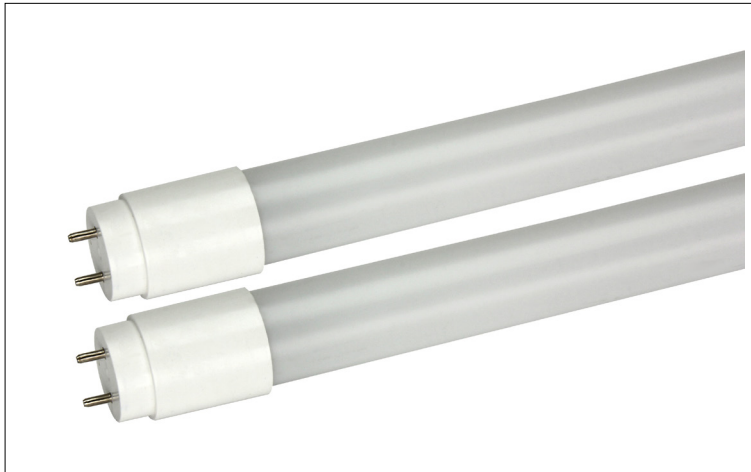


LED T8 2FT/ 3FT/ 4FT TYPE-C WITH EXTERNAL DRIVER - COATED GLASS SERIES



PRODUCT DESCRIPTION:

MaxLite LED T8 with External Driver are the ideal energy saving choices when upgrading traditional linear T8 fluorescent lamps in fixtures containing standard G13 (medium bi-pin) sockets. **MaxLite lamps and drivers must be used together or UL is voided.**



FEATURES:

- Instant on
- 0-10V Dimming down to 10%
- Mercury free and virtually no UV or IR light
- Suitable for open or enclosed fixtures
- Suitable for dry and damp locations

CONTROLS READY:

MaxLite's new Controls Ready (CR) fixtures allows for quick and easy in-field installation (plug and play) of controls. Simply purchase any CR fixture and the required Controls Node and you're all set! See the accessory table for all controls options available for this fixture.

WARRANTY:

5-year standard warranty (further details available at www.maxlite.com/warranties) Product may be eligible for a warranty extension to 10 years, for an additional fee. Contact MaxLite for details.

ORDERING INFORMATION

ORDER CODE	MODEL NUMBER	DESCRIPTION
2FT		
14101936	L7.5T8EX235-CG-C	7.5W 2-FT LED T8 EXTERNAL (UL-C) 3500K COATED GLASS W/ PET COATING
14101937	L7.5T8EX240-CG-C	7.5W 2-FT LED T8 EXTERNAL (UL-C) 4000K COATED GLASS W/ PET COATING
103413	L7.5T8EX250-CG-C	7.5W 2-FT LED T8 EXTERNAL (UL-C) 5000K COATED GLASS W/ PET COATING
105673	DDR2L7.5IND-CR	EXTERNAL DRIVER (1 OR 2-LAMP) FOR L7.5T8EX2XX-CG-CONTROL READY
105674	DDR4L7.5IND-CR	EXTERNAL DRIVER (3 OR 4-LAMP) FOR L7.5T8EX2XXCG-CONTROL READY
3FT		
104318	L11.5T8EX335-CG-C	11.5W 3-FT LED T8 EXTERNAL (UL-C) 3500K COATED GLASS W/ PET COATING
105972	L11.5T8EX340-CG-C	11.5W 3-FT LED T8 EXTERNAL (UL-C) 4000K COATED GLASS W/ PET COATING
104320	L11.5T8EX350-CG-C	11.5W 3-FT LED T8 EXTERNAL (UL-C) 5000K COATED GLASS W/ PET COATING
105675	DDR2L11.5IND-CR	EXTERNAL DRIVER (1 OR 2-LAMP) FOR L11.5T8EX3XXCG-CONTROL READY AND L11.5T8EX4XXCG-CONTROL READY
105676	DDR4L11.5IND-CR	EXTERNAL DRIVER (1 OR 2-LAMP) FOR L11.5T8EX3XXCG-CONTROL READY AND L11.5T8EX4XXCG-CONTROL READY

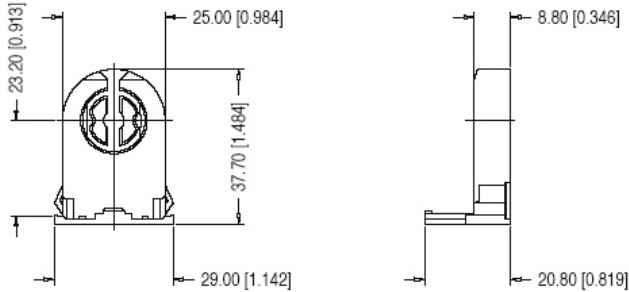
ORDERING INFORMATION

ORDER CODE	MODEL NUMBER	DESCRIPTION
4FT		
14101933	L11.5T8EX435-CG-C	11.5W 4-FT LD T8 EXTERNAL (UL-C) 3500K COATED GLASS W/ PET COATING
14101934	L11.5T8EX440-CG-C	11.5W 4-FT LD T8 EXTERNAL (UL-C) 4000K COATED GLASS W/ PET COATING
14101935	L11.5T8EX450-CG-C	11.5W 4-FT LD T8 EXTERNAL (UL-C) 5000K COATED GLASS W/ PET COATING
105675	DDR2L11.5IND-CR	EXTERNAL DRIVER (1 OR 2-LAMP) FOR L11.5T8EX3XXCG-CONTROL READY AND L11.5T8EX4XXCG-CONTROL READY
105676	DDR4L11.5IND-CR	EXTERNAL DRIVER (1 OR 2-LAMP) FOR L11.5T8EX3XXCG-CONTROL READY AND L11.5T8EX4XXCG-CONTROL READY
14101941	L13T8EX435-CG-C	13W 4-FT LED T8 EXTERNAL (UL-C) 3500K COATED GLASS W/ PET COATING
14101942	L13T8EX440-CG-C	13W 4-FT LED T8 EXTERNAL (UL-C) 4000K COATED GLASS W/ PET COATING
14101943	L13T8EX450-CG-C	13W 4-FT LED T8 EXTERNAL (UL-C) 5000K COATED GLASS W/ PET COATING
105677	DDR2L13IND-CR	EXTERNAL DRIVER (1 OR 2-LAMP) FOR L13T8EX4XXCG-CONTROL READY
105678	DDR4L13IND-CR	EXTERNAL DRIVER (3 OR 4-LAMP) FOR L13T8EX4XX-CG-CONTROL READY

SPECIFICATIONS:

ITEM	SPECIFICATION	2 - FOOT - DETAILS	3 - FOOT - DETAILS	4 - FOOT - DETAILS	4 - FOOT - DETAILS
GENERAL PERFORMANCE	Power Consumption (bare lamp)	7.5W	11.5W	11.5W	13W
	System Power	9W	13W	13W	15W
	Lumens Delivered	1150-1200 lm	1650-1700 lm	1750-1800 lm	2100-2200 lm
	Efficacy	128-133 lm/W	127-131 lm/W	135-138 lm/W	140-147lm/w
	CRI	≥80			
	Beam Angle	210°±10%			
	Color Temperature (CCT)	3500K, 4000K & 5000K			
Lumen Maintenance (L70)	50,000 Hours				
ELECTRICAL	Power Factor	≥ 0.90			
	Input Voltage	120V-277V, 50/60 Hz			
PHYSICAL	Operating Temperature	4°F to 113°F (-20 to 45°C)			
	Lens	Coated Glass			
	Base	Medium Bi-Pin (G13)			
CERTIFICATION	Certification	cETLus, FCC			
	Material Usage	RoHS compliant; no mercury			
	Environment	Damp location			
	Warranty	5 Years			

LINE DRAWING DIMENSION (G13LPNS)



ACCESSORIES

ORDER CODE	MODEL NUMBER	DESCRIPTION	IMAGE
73978	G13LPNS	G13 LOW PROFILE NON-SHUNTED LAMP HOLDER	
103548	T8C-BBU	BATTERY BACK UP FOR TYPE C LINEARS	
105891	CN-MGMST	CONTROL NODE MAGNET, MICROWAVE MOTION SENSOR, TRANSLUCENT	
105567	CN-REMOTE	CONTROL NODE REMOTE CONTROL	
106318	NPP-300W	120-277V NETWORK POWER PACK 300W MAX	
107788	NPPSL-PSW	NETWORK POWER PACK PIR SENSOR, 12V, WHITE	
105895	NN-MGT	NETWORK NODE MAGNET, TRANSLUCENT	

TUBE AND DRIVER PAIRING WITH DLC INFORMATION

TUBE	LENGTH	BARE TUBE (W)	SYSTEM (W)	LUMENS	EFFICACY	CCT OPTIONS	# OF TUBES	DRIVER	DLC MODEL NUMBER	DLC PRODUCT ID
L7.5T8EX2XX-CG-C	2	7.5	9	1150-1200	128-133	3500k, 4000k, 5000k	1	DDR2L7.5IND-CR	L7.5T8EX2XXDR1L7.5	PL0T5BPSEX1M1, PL1ZECUKFAD6, PL6JZ167XP3Q
							2		L7.5T8EX2XXDR2L7.5	PLGQR4PSW30Q, PL8PBOJB8KQ, PL6TDE9G0LFP
							3	DDR4L7.5IND-CR	L7.5T8EX2XXDR3L7.5	PLXUVVUTW0DV, PLVRM8ZXABI7, PLS90N4CQOSL
							4		L7.5T8EX2XXDR4L7.5	PLZQ05X1T6G8, PLPZA562Z1OX, PLBRL797KB55
L11.5T8EX3XX-CG-C	3	11.5	13	1650-1700	127-131		1	DDR2L11.5IND-CR	L11.5T8EX3XXDR1L11.5	PL9QELOKUSUJ, PLKTGXN8R5B, PLREKJP3VVPW
							2		L11.5T8EX3XXDR2L11.5	PLMBE7JYT1GG, PLKMWSAOXZMR, PLZEP8907JS
							3	DDR4L11.5IND-CR		
							4			
L11.5T8EX4XX-CG-C	4		1	DDR2L11.5IND-CR	L11.5T8EX4XXDR1L11.5		PLS6O6WF65TL, PLJSNIQ8XF03, PL554X7KCN9			
			2		L11.5T8EX4XXDR2L11.5		PLNODNVWLJ9R, PL6LYO0682JD, PLV5AWTGLZLO			
			3	DDR4L11.5IND-CR	L11.5T8EX4XXDR3L11.5		PLIXH760NOGV, PLUY9MLHY5CP, PLN3R6D251PP			
			4		L11.5T8EX4XXDR4L11.5		PLSRFPY0XOXU, PL8828N9DF32, PLEP8L8BCK6Z			
L13T8EX4XX-CG-C	4	13	15	2100-2200	140-147	1	DDR2L13IND-CR	L13T8EX4XXDR1L13	PLOY83XX6RO9, PL3LBIJLZV1F, PL8EPO058L8W	
						2		L13T8EX4XXDR2L13	PLJQ6877W7DS, PLBNAZVTVJIO, PLEI0030PRD8	
						3	DDR4L13IND-CR	L13T8EX4XXDR3L13	PLABOHGK2VNS, PL1XMHDDSKOR, PLOW0Y4M8AWT	
						4		L13T8EX4XXDR4L13	PLRZFWP6Q74D, PL9MCRE5C3O2, PLWF1L0H93J7	

Sensor

SENSOR	TECHNOLOGY	DIMMING	REMOTE CONTROL	QR CODE
CN-MGMST	MICROWAVE FOR MOTION SENSING	BI-LEVEL	CN-REMOTE	
NN-MGT	BLUETOOTH NETWORKING	BI-LEVEL	c-MAX APP (iPHONE or ANDROID)	

