

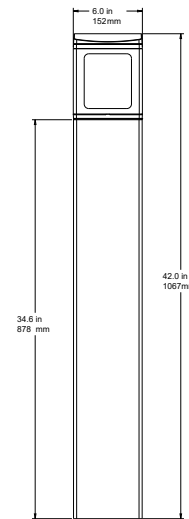


BOLLARD MP-BL Series

The MPulse Bollard is designed to replace HID lighting systems up to 100W MH. These fixtures are ideal for retail centers, industrial parks, schools and universities, public transit and airports, office buildings and medical facilities.



Shown with glare shield



FEATURES

- Visual Comfort Standard
- 120-277V with dimming capability for 25W models
- CRI ≥ 80
- 10 year limited warranty
- Easy installation
- LEDs have a calculated lumen maintenance value (L80) > 100,000 hours calculated at 25°C

CONSTRUCTION:

- Die Cast and extruded Aluminum construction
- Powder coated to be rust and corrosion proof

ENVIRONMENT:

- UL listed for Wet Locations
- IP66 rated Optical system

INSTALLATION:

- Mounting kit with (1) sheet metal template and (4) 3/8 x 8" L-Hook Anchor Bolts provided with the fixture

WARRANTY:

10-year standard warranty with labor allowance* (further details available at www.maxlite.com/warranties)

*Warranty Limitations: Product must be rated for the application per the Product Data Sheet (PDS); operated ≤16 hrs/day; in ambient of -29°F to 104°F.

*Up to \$25/unit; labor allowances of up to \$500/unit available for purchase – contact MaxLite representative for details.

MODEL SELECTION Typical order example: MP-BL24UT5-840B

MP	-	U	T5	-	
FAMILY	OUTPUT	VOLTAGE	DISTRIBUTION	LED MODULE	FINISH
MP-BL= MPulse Bollard	12= 12W, 50W MH Replacement 25= 25W, 100W MH Replacement	U= 120-277V	T5= Type 5, Visual Comfort	840= 4000K, CRI 80+ 850= 5000K, CRI 80+	S= Silver B= Bronze <i>Contact Maxlite for additional finishes.</i>

REPLACEMENT PARTS

ORDER CODE	ITEM NAME	ITEM DESCRIPTION	ITEM IMAGE
103960 ¹	MP-BLFLATSHIELDB	Glare Shield, Flat Side Only, Bronze	
103868 ¹	MP-BLFLATSHIELDS	Glare Shield, Flat Side Only, Silver	
14099914 ²	MP-BLBASEKIT	Mounting Kit including sheet metal template, anchor bolts, washers and nuts required for installation	

1. An M4x15mm pan head machine screw is required for installation, not included.
2. One kit is provided with each bollard. Order separately for replacement parts only.



BOLLARD MP-BL Series

SPECIFICATIONS:

ITEM	SPECIFICATION	12W	25W
GENERAL PERFORMANCE	Input Power (W)	13W	24W
	Lumens Delivered @ 4000K (lm)	889	1,603
	Lumens Delivered @ 5000K (lm)	893	1,606
	Efficacy (lm/W)	68	67
	CRI	≥80	
	BUG	B1-U3-G1	
ELECTRICAL	Power Factor	>90%	
	Input Voltage	120-277V	
PHYSICAL	Weight	21.25 lbs	
CERTIFICATION	Certification	cULus listed, TAA compliant, IP66	
	Environment	Wet location	
	Warranty	10-year standard warranty*	
	Operating Temperature	-40°F - 122°F	

LAYOUT:

Each gridline represents one mounting height.

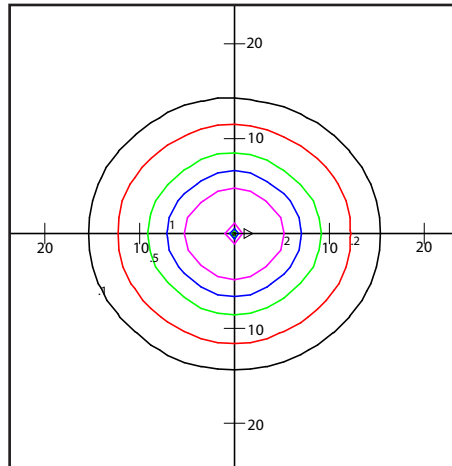
For mounting heights other than noted multiply FC by the below factor.

$$\text{Factor} = \frac{(\text{Chart's Mtg Height})^2}{(\text{Actual Mtg Height})^2}$$

LEGEND

- 0.5 FC
- 1 FC
- 2 FC
- 5 FC

12 WATT



25 WATT

