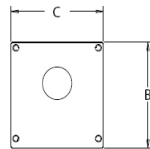
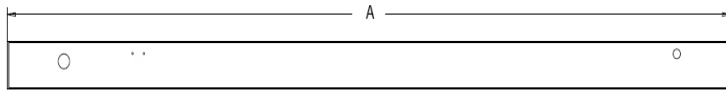


LINEAR FIXTURE L-MAX LINEAR LED LUMINAIRE



Intertek



PRODUCT DESCRIPTION:

The compact and high-performing L-Max brings eye-pleasing illumination to architectural and commercial interiors. Designed to be either surface mounted or suspended, this lightweight and easy-to-install luminaire lends a clean aesthetic to offices, retail spaces, supermarkets, stairwells and other applications that require high quality lighting that is DLC Premium listed and price-effective. The L-Max can be quickly and easily linked together to create runs of light that appear seamless.

CONSTRUCTION:

- Constructed of durable 19 gauge aluminum body and end caps
- Polycarbonate diffused lends delivers a low-glare, diffused light distribution
- Mounting options - Surface, Suspended

FEATURES:

- Offered in 2 ft (20W) and 4 ft (40W and 60W) versions
- 0-10V Dimming
- DLC Premium, low bay and Stairwell listing on select models.
- Standard Five year limited warranty and 10 year warranty available
- L70 ≥ 100,000 hours AT 25°C Ambient
- Suitable for damp locations
- Operating temperature 10°C to 40°C
- Varying layout configuration with L shape connectors (units)
- Linkable for continuous runs maximum of 10 units or 40' length
- Surface mounting and pendant mounting standard
- Emergency lighting (battery backup) and Sensor option



WARRANTY:

5-year standard warranty (further details available at www.maxlite.com/warranties) Product may be eligible for a warranty extension to 10 years, for an additional fee. Contact MaxLite for details.

DIMENSIONS			
PRODUCT	A	B	C
LM-2420UF-40	23.96	2.43	2.35
LM-4840UF-40	47.91	2.43	2.35
LM-4860UF-40	47.91	2.43	2.35

MODEL SELECTION (Full list of order codes on pg. 2)				Typical order example: LM-4840UF-40				
LM	-			U	F	-		
FAMILY	-	SIZE	WATTAGE (NOMINAL)	VOLTAGE	OPTICS	-	CCT	
LM=L-Max	-	24=2ft ¹	20=20W	U=120-277V	F=Frosted Lens	-	35=3500K	
		48=4ft	40=40W			40=4000K ³		(Omit)=None
			60=60W			50=5000K		EM=Battery Backup Unit MS=Bi-Level Motion Sensor

1. EM and MS options are not available together in any CCT.
2. No EM option on 2' models.
3. 4000K standard (all other CCT's are special ordered)

SPECIFICATIONS:


		LM-2420UF-40	LM-4840UF-40	LM-4860UF-40
ITEM	SPECIFICATION	DETAILS		
GENERAL PERFORMANCE	Power Consumption (W)	19W	40W	59W
	Lumens Delivered (lm)	2,570 lm	5,262 lm	7,923 lm
	Efficacy (lm/W)	133 lm/W	132 lm/W	133 lm/W
	CRI	≥80		
	Color Temperature (K)	3500K, 4000K & 5000K		
	L70 Lumen Maintenance (hours)	≥ 100,000		
	Color Consistency	Proprietary binning for uniform color		
ELECTRICAL	Power Factor	0.9		
	Input Voltage	120-277V		
	Mounting	Surface Mounting, Suspended Mounting		
	Dimming	0-10V Dimming		
	Operating Temperature	10°C to 40°C		
	Humidity	20-85% RH, non-condensing		
CERTIFICATION	Certifications	ETL Listed		
	Material Usage	RoHS compliant; no mercury		
	Environment	Indoor / Damp		
	Warranty	5 years standard, 10 year warranty option is available		
QUALIFICATION	DesignLight Consortium	DLC Premium		

ORDERING*:

	ORDER CODE	MODEL NUMBER	WATTAGE	CCT
2 FT.	14100476	LM-2420UF-35	20W	3500K
	14100472	LM-2420UF-40	20W	4000K
	103177	LM-2420UF-50	20W	5000K
4 FT.	14099779	LM-4840UF-35	40W	3500K
	14099780	LM-4840UF-40	40W	4000K
	14099781	LM-4840UF-50	40W	5000K
	14099782	LM-4860UF-35	60W	3500K
	14099783	LM-4860UF-40	60W	4000K
	14099784	LM-4860UF-50	60W	5000K

*Please contact your MaxLite representative to order products that don't have order codes listed here.

SENSOR INFORMATION:

SENSOR	TECHNOLOGY	DIMMING	DAYLIGHT HARVESTING	REMOTE CONTROL	
MS	HIGH FREQUENCY	BI-LEVEL	SET POINT	YES	

ACCESSORIES:

ORDER CODE	DESCRIPTION	MODEL NUMBER
102970	L-MAX CEILING CANOPY KIT WITH STRAIN RELIEF	LM-CANOPY
14100332	L-MAX CONNECTOR KIT - BRACKET, SCREWS, JOINER WRENCH	LM-CONKIT
14100329	L-MAX "L" CONNECTOR PIECE 7"X7"	LM-LCON
108133	REMOTE FOR L-MAX MOTION SENSOR	RMHYTHRC-05
104361	L-MAX WALL MOUNT BRACKET AND HARDWARE. 1PC PER KIT	LM-WM

4. (2) LM-WM kits per fixture

DLC LISTING MATRIX – PRODUCT ID AND CLASSIFICATION:

PRODUCT ID	MODEL NUMBER	PRIMARY USE	CLASSIFICATION
PT2RCW95	LM-2420UF-35[BLANK, MS, EM]	Direct Linear Ambient Luminaires	Premium
P0ZDQE4E	LM-2420UF-40[BLANK, MS, EM]	Direct Linear Ambient Luminaires	Premium
PMGD6ZHO	LM-2420UF-50[BLANK, MS, EM]	Direct Linear Ambient Luminaires	Premium
PO5BM4CH	LM-4840UF-35[BLANK, MS, EM]	Direct Linear Ambient Luminaires	Premium
PVPWPBCY	LM-4840UF-40[BLANK, MS, EM]	Direct Linear Ambient Luminaires	Premium
PXX7KO1D	LM-4840UF-50[BLANK, MS, EM]	Direct Linear Ambient Luminaires	Premium
PXSS880Z	LM-4860UF-35[BLANK, MS, EM]	Direct Linear Ambient Luminaires	Premium
PKGGL58S	LM-4860UF-40[BLANK, MS, EM]	Direct Linear Ambient Luminaires	Premium
P8LZIJ3V	LM-4860UF-50[BLANK, MS, EM]	Direct Linear Ambient Luminaires	Premium
PAT69E2D	LM-4840UF-35[BLANK, MS, EM]	Low-Bay Luminaires for Commercial and Industrial Buildings	Premium
PALTAS7J	LM-4840UF-40[BLANK, MS, EM]	Low-Bay Luminaires for Commercial and Industrial Buildings	Premium
PROMHVIV	LM-4840UF-50[BLANK, MS, EM]	Low-Bay Luminaires for Commercial and Industrial Buildings	Premium
PKIS9ILT	LM-4860UF-35[BLANK, MS, EM]	Low-Bay Luminaires for Commercial and Industrial Buildings	Premium
P1YEQAEQ	LM-4860UF-40[BLANK, MS, EM]	Low-Bay Luminaires for Commercial and Industrial Buildings	Premium
P3XB4SKT	LM-4860UF-50[BLANK, MS, EM]	Low-Bay Luminaires for Commercial and Industrial Buildings	Premium
P7TDFD0C	LM-2420UF-35MS[BLANK, EM]	Stairwell and Passageway Luminaires	Premium
PW819RCQ	LM-2420UF-40MS[BLANK, EM]	Stairwell and Passageway Luminaires	Premium
P6HUNRNS	LM-2420UF-50MS[BLANK, EM]	Stairwell and Passageway Luminaires	Premium
P4AZ255H	LM-4840UF-35MS[BLANK, EM]	Stairwell and Passageway Luminaires	Premium
PV850I1V	LM-4840UF-40MS[BLANK, EM]	Stairwell and Passageway Luminaires	Premium
P1VKFN1N	LM-4840UF-50MS[BLANK, EM]	Stairwell and Passageway Luminaires	Premium
PLM387SU	LM-4860UF-35MS[BLANK, EM]	Stairwell and Passageway Luminaires	Premium
P0PHZ6JC	LM-4860UF-40MS[BLANK, EM]	Stairwell and Passageway Luminaires	Premium
P7PWM77F	LM-4860UF-50MS[BLANK, EM]	Stairwell and Passageway Luminaires	Premium

*For motion sensor setting and information, please visit www.maxlite.com/controls