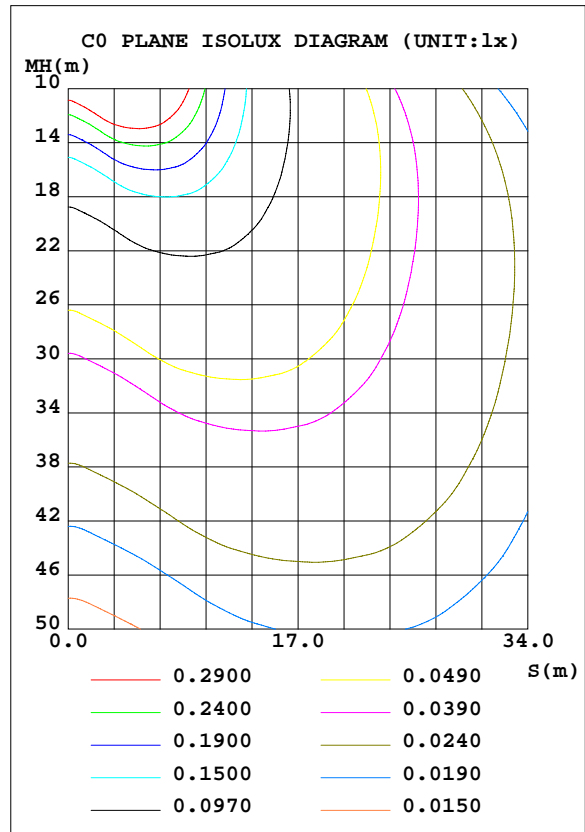
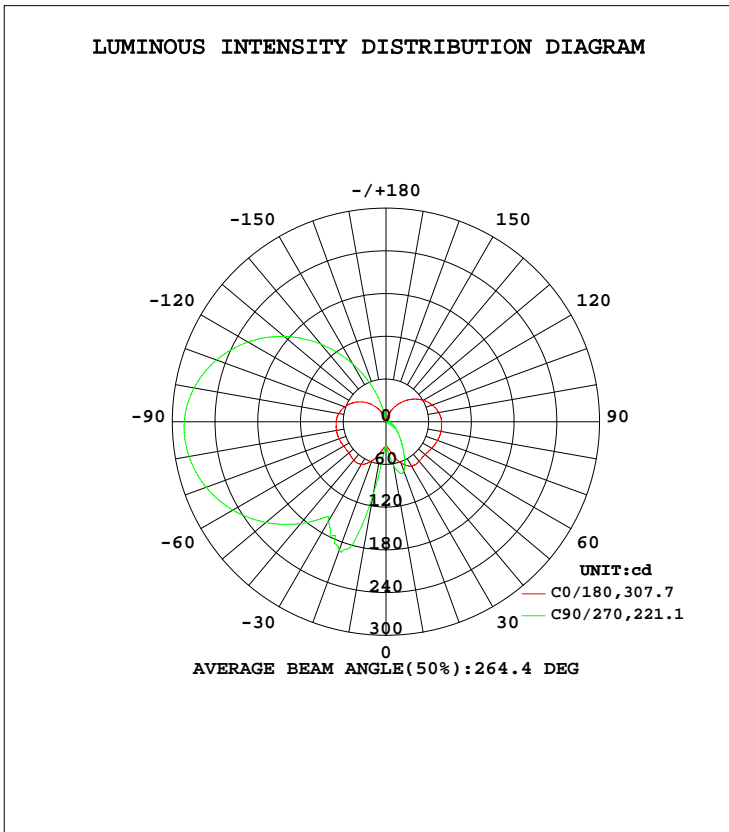


LUMINAIRE PHOTOMETRIC TEST REPORT

Test:U:120.0V I:0.1335A P:15.94W PF:0.9951 Lamp Flux:1091.35x1 lm		
NAME: 4406-30	TYPE:N/A	WEIGHT:N/A
SPEC.:N/A	DIM.: N/A	SERIAL No.:N/A
MFR.:	SUR.:N/A	Shielding Angle:N/A

DATA OF LAMP		PHOTOMETRIC DATA Eff: 68.47 lm/W			
MODEL	4406-30-YY	Imax(cd)	283.8	S/MH(C0/180)	2.54
NOMINAL POWER(W)		LOR(%)	100.0	S/MH(C90/270)	1.44
RATED VOLTAGE(V)	120	TOTAL FLUX(lm)	1091.4	η UP, DN(C0-180)	39.1,47.6
NOMINAL FLUX(lm)	1091.35	CIE CLASS	DIFFUSE	η UP, DN(C180-360)	3.9,9.4
LAMPS INSIDE	1	η up(%)	43.0	CIBSE SHR NOM	0.50
TEST VOLTAGE(V)	120	η down(%)	57.0	CIBSE SHR MAX	0.50



C Range: 0 - 360DEG  
 C Interval: 22.5DEG  
 Test Speed: 10.0deg/s  
 Temperature:24.9DEG  
 Operators:  
 Test Date:2020-04-27

γ Range: 0 - 180DEG  
 γ Interval: 1.0DEG  
 Test System: GO-R5000\_V2 SYSTEM V2.0.351  
 Humidity:51%  
 Test Distance:2.502m [K=1.0000]  
 Remarks:

ZONAL FLUX DIAGRAM

ZONAL FLUX DIAGRAM:

γ	C0	C45	C90	C135	C180	C225	C270	C315	γ	Φ zone	Φ total	%lum, lamp
10	43.18	68.24	102.8	72.62	44.01	53.88	62.75	53.68	0- 10	4.654	4.654	0.43,0.43
20	58.53	136.5	192.2	153.5	61.54	70.44	73.60	69.65	10- 20	24.99	29.64	2.72,2.72
30	69.09	149.9	164.7	157.2	72.18	63.80	49.96	60.03	20- 30	46.56	76.20	6.98,6.98
40	70.44	140.2	186.7	144.7	72.30	42.13	31.83	38.38	30- 40	58.33	134.5	12.3,12.3
50	68.32	161.1	220.1	166.4	71.80	25.23	20.64	22.84	40- 50	71.65	206.2	18.9,18.9
60	68.60	179.0	248.2	185.3	74.37	15.82	13.74	13.99	50- 60	86.65	292.8	26.8,26.8
70	70.21	192.5	269.0	199.3	77.19	10.79	8.797	8.608	60- 70	100.9	393.7	36.1,36.1
80	70.81	199.9	280.7	207.0	78.51	7.537	5.786	5.097	70- 80	111.7	505.4	46.3,46.3
90	70.03	201.1	283.3	208.5	78.08	5.596	3.815	3.030	80- 90	116.6	622.0	57,57
100	67.35	193.7	273.7	201.3	75.30	5.507	3.899	2.956	90-100	114.9	736.9	67.5,67.5
110	61.60	178.7	253.4	186.1	69.15	5.125	3.884	2.765	100-110	105.3	842.2	77.2,77.2
120	53.48	157.1	223.9	164.0	60.48	4.532	3.739	2.412	110-120	89.30	931.5	85.4,85.4
130	43.45	129.9	186.4	136.2	49.60	3.746	3.461	2.027	120-130	69.18	1001	91.7,91.7
140	32.01	98.46	142.4	103.8	37.15	3.076	2.976	1.605	130-140	47.71	1048	96.1,96.1
150	20.00	64.25	93.88	68.53	23.89	2.930	2.376	1.548	140-150	27.78	1076	98.6,98.6
160	8.861	30.49	45.21	33.33	11.19	2.629	1.766	1.615	150-160	12.17	1088	99.7,99.7
170	1.472	4.387	5.856	5.631	2.085	1.051	1.039	1.174	160-170	2.844	1091	100,100
180	0.7995	0.6749	0.4486	0.6695	0.7321	0.7338	0.5595	0.5573	170-180	0.1298	1091	100,100
DEG	LUMINOUS INTENSITY:cd Less than 25% Percent = 15.0 %								UNIT:lm			

Conical surface Flux(90deg): 168.5 lm

%lum = 15.4%  
 %lamp = 15.4%

Conical surface Flux(120deg): 292.82 lm

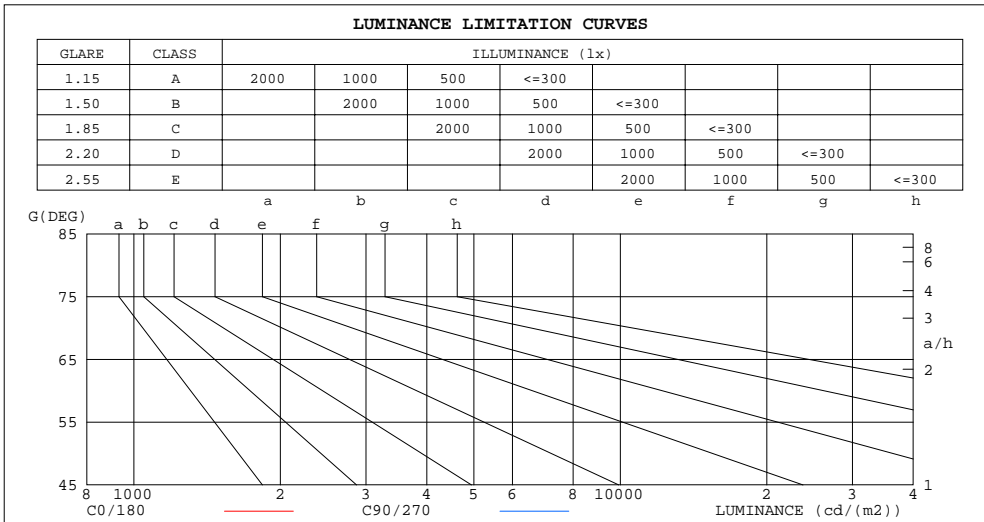
%lum = 26.8%  
 %lamp = 26.8%

C Range: 0 - 360DEG  
 C Interval: 22.5DEG  
 Test Speed: 10.0deg/s  
 Temperature:24.9DEG  
 Operators:  
 Test Date:2020-04-27

γ Range: 0 - 180DEG  
 γ Interval: 1.0DEG  
 Test System: GO-R5000\_V2 SYSTEM V2.0.351  
 Humidity:51%  
 Test Distance:2.502m [K=1.0000]  
 Remarks:

**LUMINANCE LIMITATION CURVES**

Test:U:120.0V I:0.1335A P:15.94W PF:0.9951 Lamp Flux:1091.35x1 lm		
NAME: 4406-30	TYPE:N/A	WEIGHT:N/A
SPEC.:N/A	DIM.: N/A	SERIAL No.:N/A
MFR.:	SUR.:N/A	Shielding Angle:N/A



LUMINANCE cd/(m2)		
G (DEG)	C0/180	C90/270
85	8060475	32473851
80	4072000	16136950
75	2725274	10645354
70	2050053	7851188
65	1640950	6131680
60	1370171	4955855
55	1185706	4089779
50	1061464	3418382
45	978301	2878478

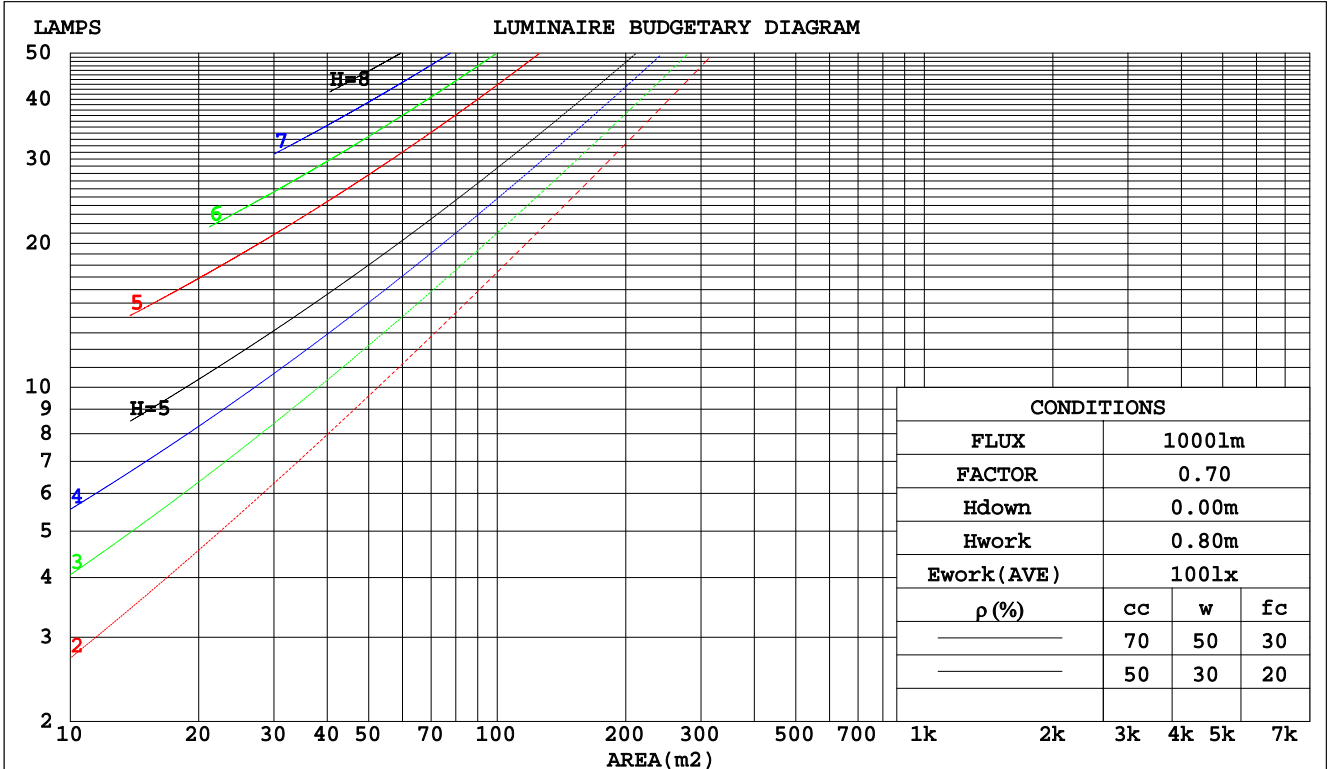
C Range: 0 - 360DEG  
 C Interval: 22.5DEG  
 Test Speed: 10.0deg/s  
 Temperature:24.9DEG  
 Operators:  
 Test Date:2020-04-27

γ Range: 0 - 180DEG  
 γ Interval: 1.0DEG  
 Test System: GO-R5000\_V2 SYSTEM V2.0.351  
 Humidity:51%  
 Test Distance:2.502m [K=1.0000]  
 Remarks:

**CU AND LUMINAIRE BUDGETARY ESTIMATE DIAGRAM**

Test:U:120.0V I:0.1335A P:15.94W PF:0.9951 Lamp Flux:1091.35x1 lm		
NAME: 4406-30	TYPE:N/A	WEIGHT:N/A
SPEC.:N/A	DIM.: N/A	SERIAL No.:N/A
MFR.:	SUR.:N/A	Shielding Angle:N/A

pcc	80%			70%			50%			30%			10%			0
	50%	30%	10%	50%	30%	10%	50%	30%	10%	50%	30%	10%	50%	30%	10%	0
pw																0
pfc	20%			20%			20%			20%			20%			0
RCR	RCR:Room Cavity Ratio						Coefficients of Utilization(CU)									
0.0	1.09	1.09	1.09	1.01	1.01	1.01	.87	.87	.87	.74	.74	.74	.63	.63	.63	.57
1.0	.87	.82	.76	.81	.76	.71	.69	.65	.61	.57	.54	.51	.47	.45	.42	.37
2.0	.74	.65	.58	.68	.61	.54	.57	.52	.47	.48	.43	.39	.39	.35	.32	.27
3.0	.63	.54	.46	.58	.50	.43	.49	.42	.37	.41	.35	.31	.33	.29	.25	.21
4.0	.55	.45	.38	.51	.42	.35	.43	.36	.30	.35	.30	.25	.28	.24	.21	.17
5.0	.48	.39	.32	.45	.36	.30	.38	.31	.25	.31	.26	.21	.25	.21	.17	.14
6.0	.43	.34	.27	.40	.31	.25	.34	.27	.22	.28	.22	.18	.22	.18	.15	.12
7.0	.39	.30	.23	.36	.27	.22	.30	.23	.19	.25	.20	.16	.20	.16	.13	.10
8.0	.35	.26	.20	.32	.24	.19	.27	.21	.16	.23	.17	.14	.19	.14	.11	.08
9.0	.32	.23	.18	.29	.22	.17	.25	.19	.14	.21	.16	.12	.17	.13	.10	.07
10.0	.29	.21	.16	.27	.20	.15	.23	.17	.13	.19	.14	.11	.16	.12	.09	.07



C Range: 0 - 360DEG  
 C Interval: 22.5DEG  
 Test Speed: 10.0deg/s  
 Temperature:24.9DEG  
 Operators:  
 Test Date:2020-04-27

γ Range: 0 - 180DEG  
 γ Interval: 1.0DEG  
 Test System: GO-R5000\_V2 SYSTEM V2.0.351  
 Humidity:51%  
 Test Distance:2.502m [K=1.0000]  
 Remarks:

WEC AND CCEC

Test:U:120.0V I:0.1335A P:15.94W PF:0.9951 Lamp Flux:1091.35x1 lm		
NAME: 4406-30	TYPE:N/A	WEIGHT:N/A
SPEC.:N/A	DIM.: N/A	SERIAL No.:N/A
MFR.:	SUR.:N/A	Shielding Angle:N/A

ρcc	80%			70%			50%			30%			10%			0
ρw	50%	30%	10%	50%	30%	10%	50%	30%	10%	50%	30%	10%	50%	30%	10%	0
ρfc	20%			20%			20%			20%			20%			0
RCR	RCR:Room Cavity Ratio						Wall Exitance Coefficients(WEC)									
0.0																
1.0	.426	.243	.077	.406	.232	.074	.368	.211	.067	.333	.192	.062	.300	.174	.056	
2.0	.353	.194	.059	.335	.184	.057	.300	.167	.052	.268	.150	.047	.238	.135	.042	
3.0	.307	.163	.049	.290	.155	.047	.258	.140	.042	.228	.125	.038	.201	.111	.034	
4.0	.272	.141	.042	.257	.134	.040	.227	.121	.036	.200	.108	.032	.175	.095	.029	
5.0	.245	.125	.036	.231	.118	.034	.204	.106	.031	.179	.094	.028	.156	.083	.025	
6.0	.223	.112	.032	.210	.106	.030	.185	.095	.028	.162	.084	.025	.141	.074	.022	
7.0	.204	.101	.029	.192	.096	.027	.170	.086	.025	.148	.076	.022	.128	.067	.020	
8.0	.189	.092	.026	.178	.087	.025	.157	.078	.022	.137	.069	.020	.118	.061	.018	
9.0	.175	.085	.024	.165	.080	.023	.145	.072	.020	.127	.064	.018	.109	.056	.016	
10.0	.164	.078	.022	.154	.074	.021	.136	.066	.019	.118	.059	.017	.102	.051	.015	

ρcc	80%			70%			50%			30%			10%			0
ρw	50%	30%	10%	50%	30%	10%	50%	30%	10%	50%	30%	10%	50%	30%	10%	0
ρfc	20%			20%			20%			20%			20%			0
RCR	RCR:Room Cavity Ratio						Ceiling Cavity Exitance Coefficients(CCEC)									
0.0	.518	.518	.518	.443	.443	.443	.302	.302	.302	.174	.174	.174	.056	.056	.056	
1.0	.519	.485	.455	.444	.417	.392	.304	.287	.271	.175	.166	.158	.056	.053	.051	
2.0	.513	.464	.423	.439	.400	.366	.301	.276	.255	.174	.161	.150	.056	.052	.049	
3.0	.506	.449	.403	.434	.387	.350	.298	.269	.245	.172	.157	.145	.055	.051	.047	
4.0	.498	.437	.391	.428	.378	.339	.294	.263	.239	.170	.154	.141	.055	.050	.046	
5.0	.491	.428	.382	.421	.370	.332	.290	.259	.235	.168	.152	.139	.054	.050	.046	
6.0	.483	.421	.376	.415	.364	.327	.287	.255	.232	.166	.150	.138	.054	.049	.045	
7.0	.476	.415	.371	.410	.359	.324	.283	.252	.229	.164	.148	.136	.053	.049	.045	
8.0	.470	.409	.368	.404	.355	.321	.280	.249	.228	.163	.147	.136	.053	.048	.045	
9.0	.464	.405	.365	.399	.351	.319	.277	.247	.226	.161	.146	.135	.052	.048	.045	
10.0	.458	.401	.363	.395	.348	.317	.274	.245	.225	.160	.145	.134	.052	.048	.045	

C Range: 0 - 360DEG  
 C Interval: 22.5DEG  
 Test Speed: 10.0deg/s  
 Temperature:24.9DEG  
 Operators:  
 Test Date:2020-04-27

γ Range: 0 - 180DEG  
 γ Interval: 1.0DEG  
 Test System: GO-R5000\_V2 SYSTEM V2.0.351  
 Humidity:51%  
 Test Distance:2.502m [K=1.0000]  
 Remarks:

UGR(Unified Glare Rating) Table

Test:U:120.0V I:0.1335A P:15.94W PF:0.9951 Lamp Flux:1091.35x1 lm										
NAME: 4406-30					TYPE:N/A			WEIGHT:N/A		
SPEC.:N/A					DIM.: N/A			SERIAL No.:N/A		
MFR.:					SUR.:N/A			Shielding Angle:N/A		
ceiling/cavity	0.7	0.7	0.5	0.5	0.3	0.7	0.7	0.5	0.5	0.3
walls	0.5	0.3	0.5	0.3	0.3	0.5	0.3	0.5	0.3	0.3
working plane	0.2	0.2	0.2	0.2	0.2	0.2	0.2	0.2	0.2	0.2
Room dimensions	Viewed crosswise					Viewed endwise				
x = 2H y = 2H	36.8	38.0	37.6	38.8	39.9	41.7	42.8	42.4	43.6	44.7
3H	39.5	40.6	40.4	41.4	42.5	45.5	46.5	46.3	47.4	48.4
4H	41.0	42.0	41.9	42.9	44.0	47.5	48.5	48.4	49.4	50.5
6H	42.6	43.6	43.5	44.5	45.6	49.8	50.7	50.7	51.6	52.7
8H	43.5	44.4	44.4	45.3	46.5	51.0	52.0	51.9	52.8	54.0
12H	44.5	45.4	45.4	46.3	47.4	52.5	53.3	53.3	54.2	55.4
4H 2H	39.4	40.4	40.2	41.3	42.3	42.3	43.3	43.1	44.1	45.2
3H	42.1	43.0	43.0	43.9	45.0	46.3	47.2	47.2	48.1	49.2
4H	43.6	44.4	44.5	45.4	46.5	48.6	49.4	49.4	50.3	51.4
6H	45.3	46.0	46.2	46.9	48.1	51.0	51.8	51.9	52.7	53.9
8H	46.1	46.8	47.1	47.8	49.0	52.4	53.1	53.3	54.0	55.2
12H	47.1	47.7	48.0	48.7	49.9	53.9	54.6	54.9	55.5	56.7
8H 4H	45.5	46.2	46.4	47.1	48.3	49.0	49.6	49.9	50.6	51.8
6H	47.4	48.0	48.4	49.0	50.2	51.8	52.3	52.7	53.3	54.5
8H	48.5	49.0	49.4	50.0	51.2	53.3	53.9	54.3	54.8	56.1
12H	49.6	50.0	50.5	51.0	52.3	55.1	55.6	56.1	56.6	57.8
12H 4H	46.1	46.8	47.1	47.7	48.9	49.0	49.7	49.9	50.6	51.8
6H	48.3	48.8	49.2	49.8	51.0	51.9	52.4	52.9	53.4	54.7
8H	49.5	49.9	50.4	50.9	52.2	53.6	54.1	54.6	55.1	56.3
Variations with the observer position at spacings:										
S = 1.0H	+ 0.1 / - 0.1					+ 0.1 / - 0.1				
1.5H	+ 0.2 / - 0.3					+ 0.2 / - 0.3				
2.0H	+ 0.3 / - 0.4					+ 0.3 / - 0.4				

CIE Pub.117 Corrected 1091 lm Total Lamp Luminous Flux.(8log(F/F0) = 0.3)

C Range: 0 - 360DEG  
 C Interval: 22.5DEG  
 Test Speed: 10.0deg/s  
 Temperature:24.9DEG  
 Operators:  
 Test Date:2020-04-27

γ Range: 0 - 180DEG  
 γInterval: 1.0DEG  
 Test System: GO-R5000\_V2 SYSTEM V2.0.351  
 Humidity:51%  
 Test Distance:2.502m [K=1.0000]  
 Remarks:

**UTILIZATION FACTORS TABLE**

Test:U:120.0V I:0.1335A P:15.94W PF:0.9951 Lamp Flux:1091.35x1 lm		
NAME: 4406-30	TYPE:N/A	WEIGHT:N/A
SPEC.:N/A	DIM.: N/A	SERIAL No.:N/A
MFR.:	SUR.:N/A	Shielding Angle:N/A

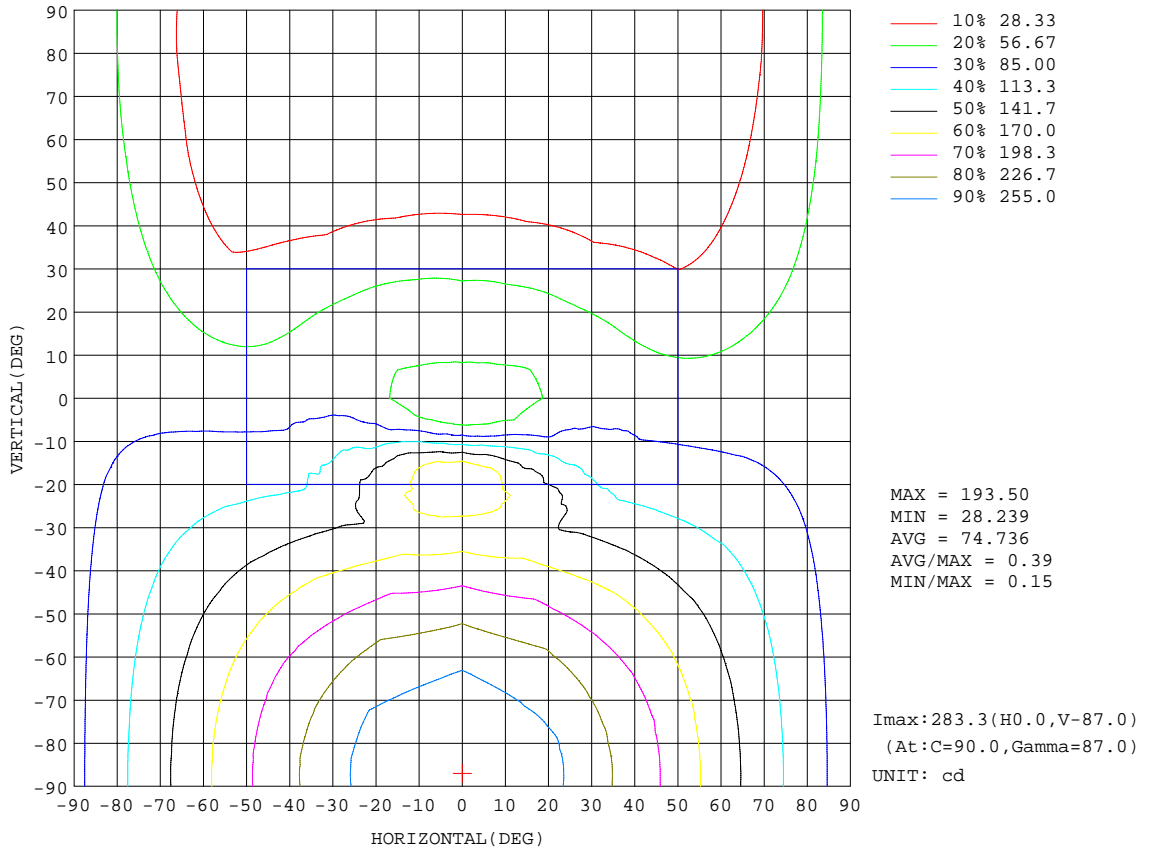
REFLECTANCE										
Ceiling	0.8	0.8	0.8	0.7	0.7	0.7	0.5	0.5	0.5	0
Walls	0.7	0.5	0.3	0.7	0.5	0.3	0.7	0.5	0.3	0
Working plane	0.2	0.2	0.2	0.2	0.2	0.2	0.2	0.2	0.2	0
ROOM INDEX	UTILIZATION FACTORS(PERCENT) $k(RI) \times RCR = 5$									
k = 0.60	37	25	17	36	24	17	33	22	16	9
0.80	46	32	23	43	31	23	39	28	21	12
1.00	53	39	29	50	37	28	44	36	26	15
1.25	60	45	36	56	43	34	50	39	31	19
1.50	65	51	41	61	48	39	53	43	35	21
2.00	73	60	50	68	56	47	59	50	42	26
2.50	78	66	56	72	62	53	63	54	47	29
3.00	82	71	62	76	66	58	66	58	51	31
4.00	87	77	69	81	72	65	70	63	57	35
5.00	91	82	75	84	77	70	72	67	61	38
ROOM INDEX	UF(total)									Direct
According to DIN EN 13032-2 2004			Suspended				SHRNOM = 1.25			

C Range: 0 - 360DEG  
 C Interval: 22.5DEG  
 Test Speed: 10.0deg/s  
 Temperature:24.9DEG  
 Operators:  
 Test Date:2020-04-27

$\gamma$  Range: 0 - 180DEG  
 $\gamma$  Interval: 1.0DEG  
 Test System: GO-R5000\_V2 SYSTEM V2.0.351  
 Humidity:51%  
 Test Distance:2.502m [K=1.0000]  
 Remarks:

**ISOCANDELA DIAGRAM**

Test:U:120.0V I:0.1335A P:15.94W PF:0.9951 Lamp Flux:1091.35x1 lm		
NAME: 4406-30	TYPE:N/A	WEIGHT:N/A
SPEC.:N/A	DIM.: N/A	SERIAL No.:N/A
MFR.:	SUR.:N/A	Shielding Angle:N/A



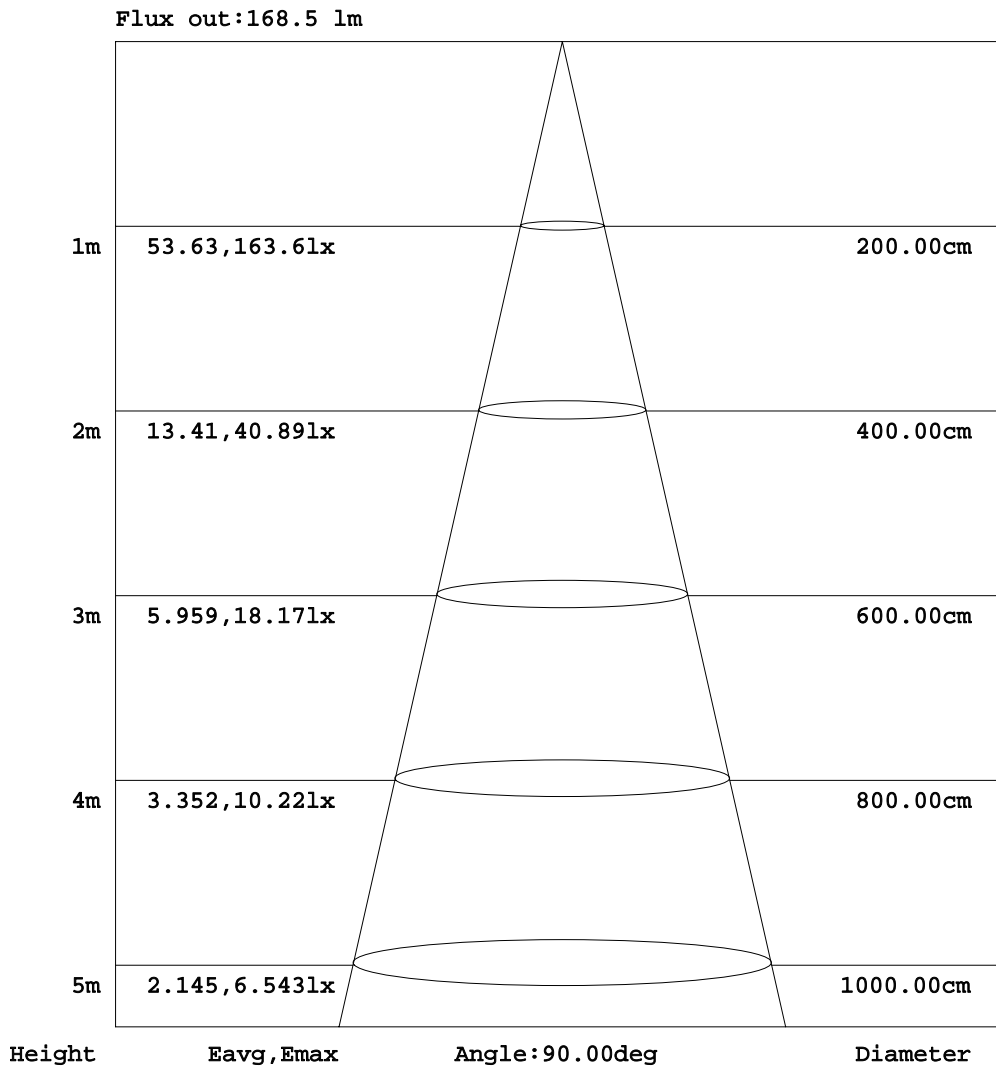
C Range: 0 - 360DEG  
 C Interval: 22.5DEG  
 Test Speed: 10.0deg/s  
 Temperature: 24.9DEG  
 Operators:  
 Test Date: 2020-04-27

γ Range: 0 - 180DEG  
 γ Interval: 1.0DEG  
 Test System: GO-R5000\_V2 SYSTEM V2.0.351  
 Humidity: 51%  
 Test Distance: 2.502m [K=1.0000]  
 Remarks:



AAI Figure

Test:U:120.0V I:0.1335A P:15.94W PF:0.9951 Lamp Flux:1091.35x1 lm		
NAME: 4406-30	TYPE:N/A	WEIGHT:N/A
SPEC.:N/A	DIM.: N/A	SERIAL No.:N/A
MFR.:	SUR.:N/A	Shielding Angle:N/A



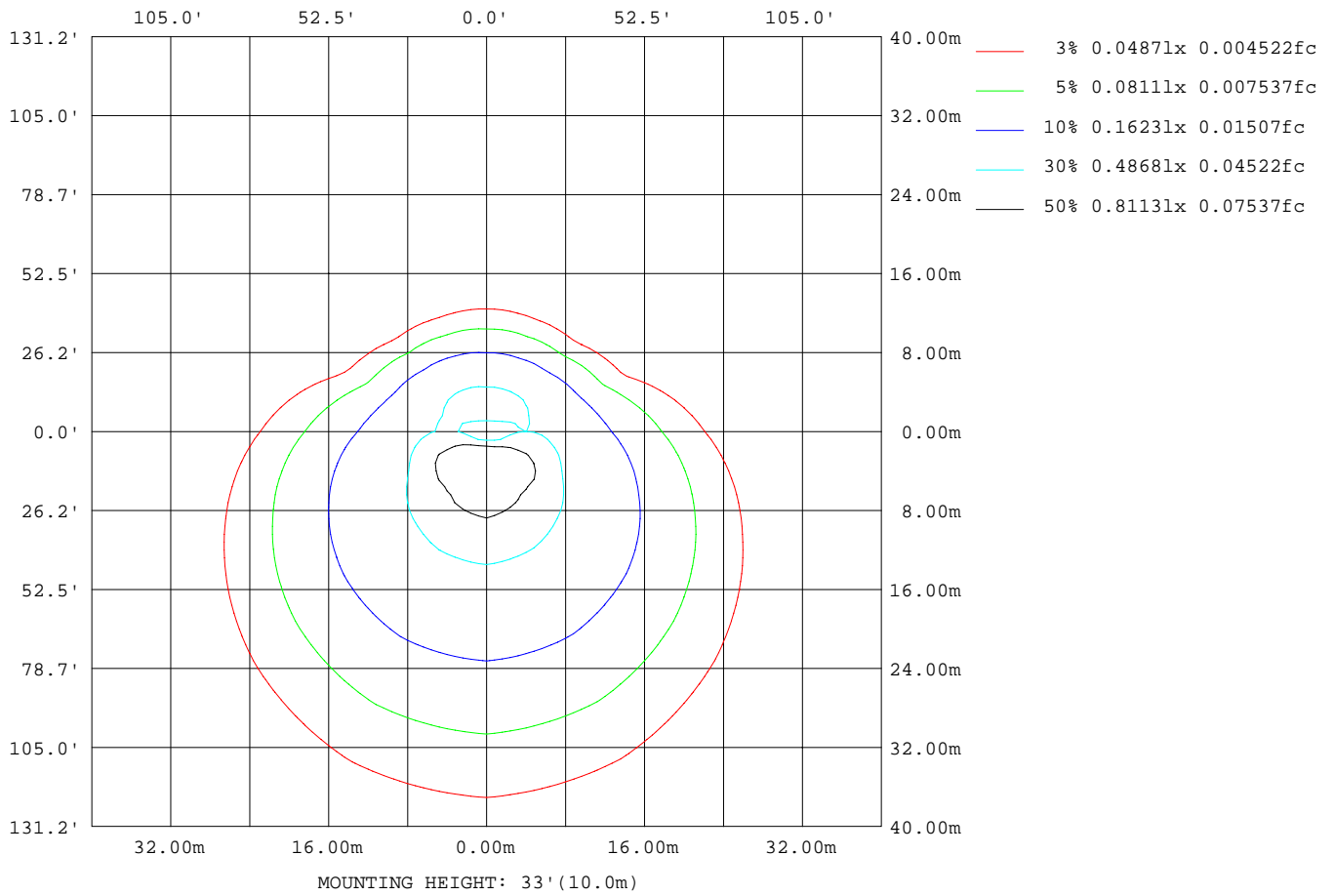
Note: The Curves indicate the illuminated area and the average illumination when the luminaire is at different distance.

C Range: 0 - 360DEG  
 C Interval: 22.5DEG  
 Test Speed: 10.0deg/s  
 Temperature: 24.9DEG  
 Operators:  
 Test Date: 2020-04-27

γ Range: 0 - 180DEG  
 γ Interval: 1.0DEG  
 Test System: GO-R5000\_V2 SYSTEM V2.0.351  
 Humidity: 51%  
 Test Distance: 2.502m [K=1.0000]  
 Remarks:

**ISOLUX DIAGRAM**

Test:U:120.0V I:0.1335A P:15.94W PF:0.9951 Lamp Flux:1091.35x1 lm		
NAME: 4406-30	TYPE:N/A	WEIGHT:N/A
SPEC.:N/A	DIM.: N/A	SERIAL No.:N/A
MFR	SUR.:N/A	Shielding Angle:N/A



C Range: 0 - 360DEG  
 C Interval: 22.5DEG  
 Test Speed: 10.0deg/s  
 Temperature:24.9DEG  
 Operators:  
 Test Date:2020-04-27

$\gamma$  Range: 0 - 180DEG  
 $\gamma$  Interval: 1.0DEG  
 Test System: GO-R5000\_V2 SYSTEM V2.0.351  
 Humidity:51%  
 Test Distance:2.502m [K=1.0000]  
 Remarks:

LED Avg.L Report

Test:U:120.0V I:0.1335A P:15.94W PF:0.9951 Lamp Flux:1091.35x1 lm		
NAME: 4406-30	TYPE:N/A	WEIGHT:N/A
SPEC.:N/A	DIM.: N/A	SERIAL No.:N/A
MFR.:	SUR.:N/A	Shielding Angle:N/A

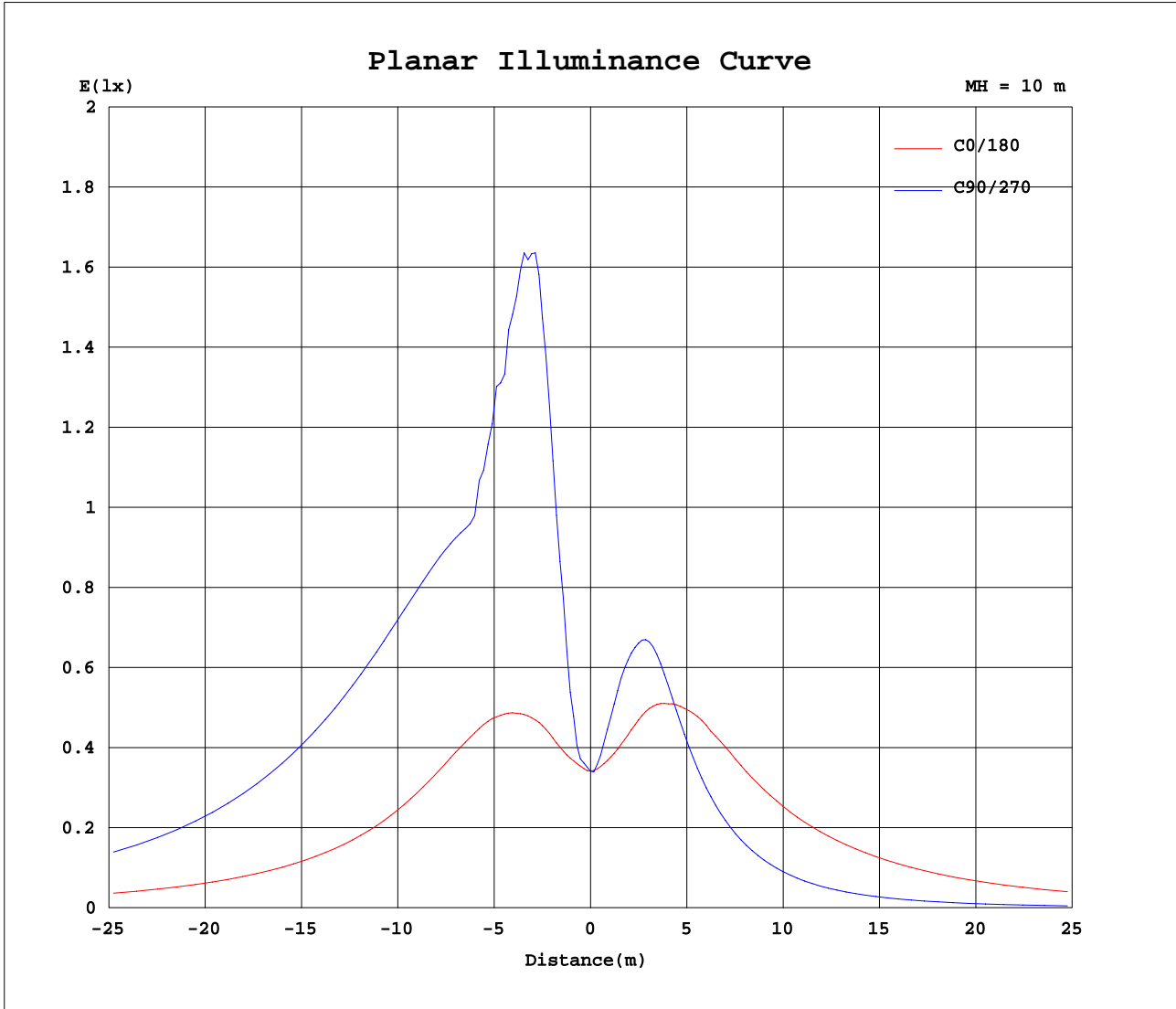
AvgL	cd/m2
L_0~180(65)av	1719218
L_0~180(75)av	2872656
L_0~180(85)av	8527604
L_90~270(65)av	3200976
L_90~270(75)av	5470749
L_90~270(85)av	16510820
L_45(65)av	2386287
L_45(75)av	4022777
L_45(85)av	12041099

Standard: GB/T 29293-2012

C Range: 0 - 360DEG  
 C Interval: 22.5DEG  
 Test Speed: 10.0deg/s  
 Temperature:24.9DEG  
 Operators:  
 Test Date:2020-04-27

γ Range: 0 - 180DEG  
 γ Interval: 1.0DEG  
 Test System: GO-R5000\_V2 SYSTEM V2.0.351  
 Humidity:51%  
 Test Distance:2.502m [K=1.0000]  
 Remarks:

Planar Illuminance Curve



C Range: 0 - 360DEG  
 C Interval: 22.5DEG  
 Test Speed: 10.0deg/s  
 Temperature: 24.9DEG  
 Operators:  
 Test Date: 2020-04-27

γ Range: 0 - 180DEG  
 γ Interval: 1.0DEG  
 Test System: GO-R5000\_V2 SYSTEM V2.0.351  
 Humidity: 51%  
 Test Distance: 2.502m [K=1.0000]  
 Remarks:

LUMINOUS DISTRIBUTION INTENSITY DATA

Test:U:120.0V I:0.1335A P:15.94W PF:0.9951 Lamp Flux:1091.35x1 lm		
NAME: 4406-30	TYPE:N/A	WEIGHT:N/A
SPEC.:N/A	DIM.: N/A	SERIAL No.:N/A
MFR.:	SUR.:N/A	Shielding Angle:N/A

Table--1

UNIT: cd

C( DEG) γ (DEG)	0	22.5	45	67.5	90	112.5	135	157.5	180	202.5	225	247.5	270	292.5	315	337.5			
0	34.2	34.2	34.2	34.2	34.2	34.2	34.2	34.2	34.2	34.2	34.2	34.2	34.2	34.2	34.2	34.2			
5	37.2	37.3	39.4	45.4	48.5	46.4	40.9	37.8	37.3	38.7	41.3	44.1	45.2	44.2	41.5	38.8			
10	43.2	48.0	68.2	90.0	103	96.9	72.6	51.2	44.0	46.9	53.9	60.3	62.8	60.4	53.7	46.4			
15	51.5	63.4	108	153	176	162	121	70.7	53.4	54.7	64.5	72.0	74.3	72.0	64.3	53.4			
20	58.5	78.5	136	178	192	185	154	90.5	61.5	61.1	70.4	75.9	73.6	74.4	69.6	60.6			
25	64.7	93.2	147	177	176	177	159	103	67.7	66.0	70.6	67.5	62.3	64.7	68.8	64.9			
30	69.1	99.5	150	159	165	161	157	115	72.2	67.6	63.8	55.3	50.0	52.3	60.0	65.5			
35	70.8	101	144	157	168	159	144	112	73.2	64.3	53.0	43.9	39.8	41.4	49.0	61.2			
40	70.4	103	140	173	187	175	145	110	72.3	56.8	42.1	34.6	31.8	32.8	38.4	53.4			
45	69.3	105	151	188	204	191	156	110	71.7	47.4	32.6	27.1	25.6	26.0	29.7	44.3			
50	68.3	110	161	202	220	205	166	116	71.8	38.8	25.2	21.3	20.6	20.6	22.8	35.9			
55	68.1	115	170	215	235	219	177	122	72.9	32.3	19.7	16.8	16.8	16.5	17.8	29.4			
60	68.6	120	179	227	248	231	185	128	74.4	28.5	15.8	13.4	13.7	13.3	14.0	25.4			
65	69.4	125	186	237	260	242	193	133	75.9	27.2	13.0	10.5	11.0	10.5	11.1	23.8			
70	70.2	129	193	245	269	250	199	136	77.2	27.4	10.8	8.16	8.80	8.19	8.61	23.5			
75	70.6	131	197	252	276	256	204	139	78.1	28.3	8.93	6.41	7.19	6.48	6.64	23.6			
80	70.8	133	200	256	281	260	207	141	78.5	29.2	7.54	4.95	5.79	5.06	5.10	23.9			
85	70.3	133	201	258	284	263	209	141	78.3	29.5	6.14	3.43	4.28	3.57	3.60	23.7			
90	70.0	133	201	258	283	263	208	141	78.1	29.9	5.60	2.90	3.81	3.09	3.03	23.8			
95	69.2	131	198	255	280	260	206	139	77.2	30.3	5.60	2.95	3.88	3.15	2.99	24.2			
100	67.3	128	194	249	274	254	201	136	75.3	29.8	5.51	2.95	3.90	3.24	2.96	23.8			
105	64.8	123	187	241	265	246	195	132	72.6	29.0	5.38	2.97	3.92	3.24	2.87	23.0			
110	61.6	117	179	230	253	235	186	126	69.2	27.8	5.13	2.93	3.88	3.26	2.77	22.0			
115	57.8	111	169	218	240	222	176	119	65.1	26.2	4.86	2.91	3.82	3.22	2.60	20.7			
120	53.5	103	157	203	224	208	164	111	60.5	24.2	4.53	2.89	3.74	3.23	2.41	19.1			
125	48.7	94.1	144	187	206	191	151	101	55.3	22.0	4.16	2.79	3.61	3.15	2.20	17.2			
130	43.5	84.5	130	169	186	173	136	91.5	49.6	19.7	3.75	2.67	3.46	3.05	2.03	15.2			
135	37.8	74.3	115	149	165	153	120	80.8	43.5	17.3	3.37	2.54	3.25	2.94	1.83	12.9			
140	32.0	63.5	98.5	129	142	132	104	69.5	37.2	15.1	3.08	2.33	2.98	2.80	1.61	10.3			
145	26.0	52.2	81.6	107	118	110	86.4	57.7	30.5	13.4	2.95	2.01	2.68	2.57	1.55	7.50			
150	20.0	40.6	64.2	84.6	93.9	87.1	68.5	45.4	23.9	11.8	2.93	1.65	2.38	2.36	1.55	4.75			
155	14.2	29.6	47.0	62.4	69.4	64.4	50.7	33.5	17.4	10.3	2.88	1.38	2.08	2.02	1.57	2.61			
160	8.86	19.0	30.5	40.5	45.2	42.1	33.3	22.2	11.2	8.10	2.63	1.23	1.77	1.66	1.62	1.47			
165	4.29	9.48	15.6	20.6	22.9	21.8	17.6	11.8	5.86	4.96	1.87	1.05	1.47	1.45	1.42	1.06			
170	1.47	2.63	4.39	5.85	5.86	6.04	5.63	3.85	2.09	2.00	1.05	0.79	1.04	1.22	1.17	0.87			
175	0.68	0.71	0.81	0.85	0.81	0.74	0.86	0.87	0.78	0.78	0.75	0.72	0.69	0.67	0.77	0.74			
180	0.80	0.81	0.67	0.59	0.45	0.52	0.67	0.81	0.73	0.74	0.73	0.69	0.56	0.45	0.56	0.67			

C Range: 0 - 360DEG  
 C Interval: 22.5DEG  
 Test Speed: 10.0deg/s  
 Temperature:24.9DEG  
 Operators:  
 Test Date:2020-04-27

γ Range: 0 - 180DEG  
 γInterval: 1.0DEG  
 Test System: GO-R5000\_V2 SYSTEM V2.0.351  
 Humidity:51%  
 Test Distance:2.502m [K=1.0000]  
 Remarks: