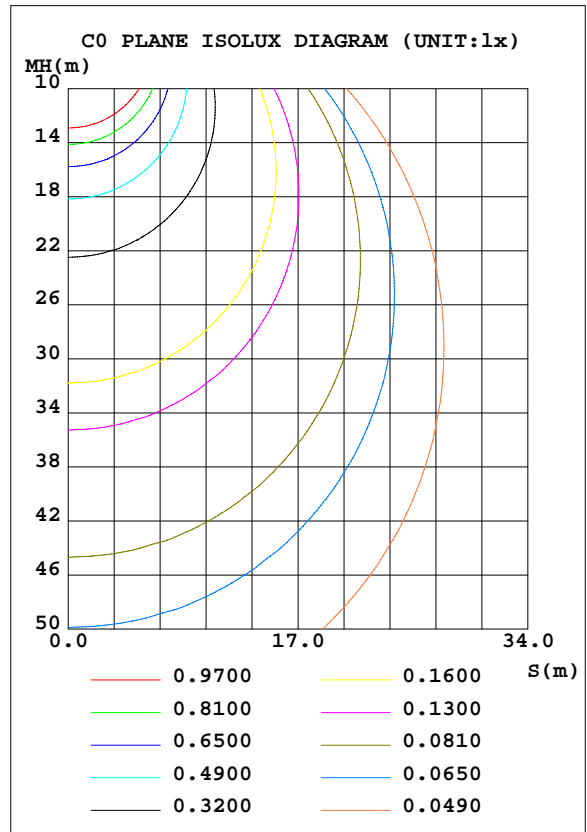
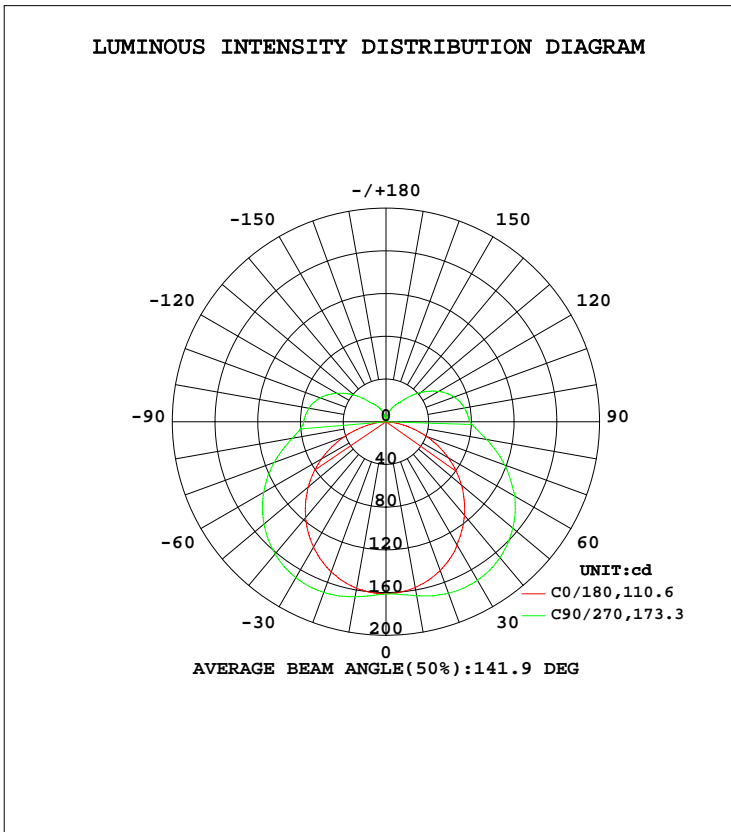


LUMINAIRE PHOTOMETRIC TEST REPORT

Test:U:119.9V I:0.1034A P:11.55W PF:0.9316 Lamp Flux:848.119x1 lm		
NAME: LED Luminaires	TYPE:N/A	WEIGHT:N/A
SPEC.:N/A	DIM.: N/A	SERIAL No.:N/A
MFR.:	SUR.:N/A	Shielding Angle:N/A

DATA OF LAMP		PHOTOMETRIC DATA Eff: 73.42 lm/W			
MODEL	4907-18	Imax(cd)	172.0	S/MH(C0/180)	1.23
NOMINAL POWER(W)	12	LOR(%)	100.0	S/MH(C90/270)	1.59
RATED VOLTAGE(V)	120	TOTAL FLUX(lm)	848.12	η UP, DN(C0-180)	10.2,39.1
NOMINAL FLUX(lm)	848.119	CIE CLASS	SEMI-D.	η UP, DN(C180-360)	10.7,40.0
LAMPS INSIDE	1	η up(%)	20.9	CIBSE SHR NOM	1.50
TEST VOLTAGE(V)	120	η down(%)	79.1	CIBSE SHR MAX	1.55



C Range: 0 - 360DEG
 C Interval: 22.5DEG
 Test Speed: 10.0deg/s
 Temperature:25.1DEG
 Operators:Hill
 Test Date:2019-12-05

γ Range: 0 - 180DEG
 γ Interval: 1.0DEG
 Test System: GO-R5000_V2 SYSTEM V2.0.351
 Humidity:44%
 Test Distance:2.485m [K=1.0000]
 Remarks:

ZONAL FLUX DIAGRAM

ZONAL FLUX DIAGRAM:

γ	C0	C45	C90	C135	C180	C225	C270	C315	γ	Φ zone	Φ total	%lum, lamp
10	158.5	163.6	166.4	162.8	157.7	161.8	165.4	162.2	0- 10	15.45	15.45	1.82,1.82
20	149.8	163.1	170.1	161.6	148.3	161.5	170.9	162.2	10- 20	45.89	61.35	7.23,7.23
30	135.7	158.1	168.7	155.9	133.2	157.2	171.4	158.0	20- 30	73.25	134.6	15.9,15.9
40	117.2	147.9	161.5	145.3	114.4	148.0	166.0	148.9	30- 40	94.02	228.6	27,27
50	95.11	132.7	149.1	129.9	92.29	133.5	155.0	134.3	40- 50	105.6	334.2	39.4,39.4
60	69.91	113.1	132.2	110.1	67.47	114.9	139.3	115.4	50- 60	106.4	440.6	51.9,51.9
70	42.23	89.91	111.3	86.99	40.62	92.72	118.2	92.89	60- 70	96.33	536.9	63.3,63.3
80	15.39	65.76	89.02	63.07	14.52	68.82	95.62	68.63	70- 80	77.29	614.2	72.4,72.4
90	0.1460	52.57	77.20	50.38	0.1203	52.63	78.75	51.78	80- 90	56.94	671.2	79.1,79.1
100	0.0807	49.59	73.19	47.45	0.0864	50.01	74.54	49.06	90-100	49.37	720.5	85,85
110	0.0995	42.56	65.58	40.52	0.1381	44.16	67.83	43.22	100-110	43.55	764.1	90.1,90.1
120	0.1270	31.85	53.36	30.06	0.2158	34.37	56.91	33.47	110-120	33.76	797.8	94.1,94.1
130	0.1889	20.61	38.92	19.25	0.2635	23.29	42.82	22.57	120-130	23.23	821.1	96.8,96.8
140	0.2824	15.54	24.40	14.88	0.3135	16.33	28.03	16.58	130-140	13.97	835.0	98.5,98.5
150	0.3802	11.01	17.28	10.63	0.3516	10.74	18.65	13.22	140-150	7.846	842.9	99.4,99.4
160	0.4715	6.190	10.33	6.046	0.3951	4.879	11.22	9.344	150-160	3.888	846.8	99.8,99.8
170	0.4247	1.923	3.495	1.614	0.3703	1.128	4.325	4.027	160-170	1.231	848.0	100,100
180	0.4605	0.3173	0.2544	0.3045	0.4418	0.4281	0.3052	0.3274	170-180	0.1204	848.1	100,100
DEG	LUMINOUS INTENSITY:cd Less than 25% Percent = 17.5 %									UNIT:lm		

Conical surface Flux(90deg): 280.61 lm

%lum = 33.1%
%lamp = 33.1%

Conical surface Flux(120deg): 440.59 lm

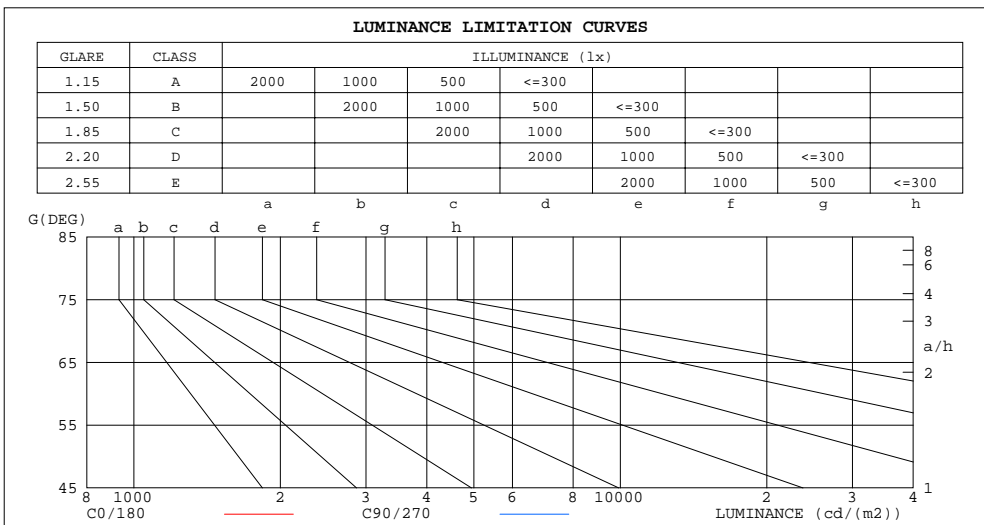
%lum = 51.9%
%lamp = 51.9%

C Range: 0 - 360DEG
C Interval: 22.5DEG
Test Speed: 10.0deg/s
Temperature:25.1DEG
Operators:Hill
Test Date:2019-12-05

γ Range: 0 - 180DEG
γ Interval: 1.0DEG
Test System: GO-R5000_V2 SYSTEM V2.0.351
Humidity:44%
Test Distance:2.485m [K=1.0000]
Remarks:

LUMINANCE LIMITATION CURVES

Test:U:119.9V I:0.1034A P:11.55W PF:0.9316 Lamp Flux:848.119x1 lm		
NAME: LED Luminaires	TYPE:N/A	WEIGHT:N/A
SPEC.:N/A	DIM.: N/A	SERIAL No.:N/A
MFR.:	SUR.:N/A	Shielding Angle:N/A



LUMINANCE cd/(m2)		
G(DEG)	C0/180	C90/270
85	561389	9252214
80	889210	5117832
75	1100026	3853281
70	1238610	3249329
65	1330895	2885805
60	1402713	2639983
55	1447038	2459082
50	1484293	2316119
45	1510323	2202266

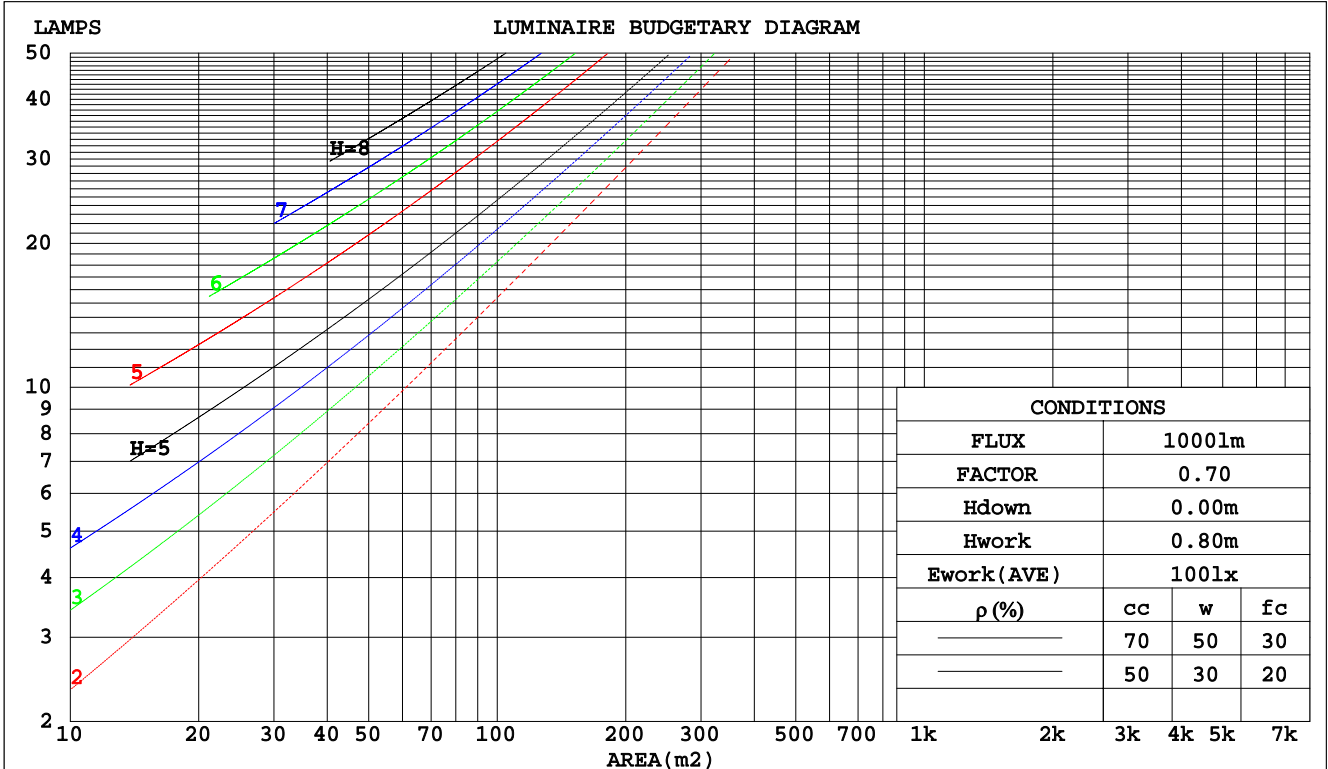
C Range: 0 - 360DEG
 C Interval: 22.5DEG
 Test Speed: 10.0deg/s
 Temperature:25.1DEG
 Operators:Hill
 Test Date:2019-12-05

γ Range: 0 - 180DEG
 γ Interval: 1.0DEG
 Test System: GO-R5000_V2 SYSTEM V2.0.351
 Humidity:44%
 Test Distance:2.485m [K=1.0000]
 Remarks:

CU AND LUMINAIRE BUDGETARY ESTIMATE DIAGRAM

Test:U:119.9V I:0.1034A P:11.55W PF:0.9316 Lamp Flux:848.119x1 lm		
NAME: LED Luminaires	TYPE:N/A	WEIGHT:N/A
SPEC.:N/A	DIM.: N/A	SERIAL No.:N/A
MFR.:	SUR.:N/A	Shielding Angle:N/A

pcc	80%			70%			50%			30%			10%			0
pw	50%	30%	10%	50%	30%	10%	50%	30%	10%	50%	30%	10%	50%	30%	10%	0
pfc	20%			20%			20%			20%			20%			0
RCR	RCR:Room Cavity Ratio						Coefficients of Utilization(CU)									
0.0	1.14	1.14	1.14	1.09	1.09	1.09	.00	.00	.00	.91	.91	.91	.83	.83	.83	.79
1.0	.95	.90	.85	.91	.86	.82	.83	.79	.76	.75	.72	.70	.68	.66	.64	.60
2.0	.81	.74	.67	.78	.71	.65	.71	.65	.60	.64	.60	.56	.58	.55	.51	.48
3.0	.71	.62	.55	.67	.59	.53	.61	.55	.49	.56	.50	.46	.51	.46	.42	.39
4.0	.62	.52	.45	.59	.50	.44	.54	.47	.41	.49	.43	.38	.45	.40	.35	.33
5.0	.55	.45	.38	.52	.44	.37	.48	.40	.35	.44	.37	.33	.40	.35	.30	.28
6.0	.49	.40	.33	.47	.38	.32	.43	.36	.30	.39	.33	.28	.36	.30	.26	.24
7.0	.44	.35	.29	.42	.34	.28	.39	.32	.26	.36	.29	.25	.33	.27	.23	.21
8.0	.40	.31	.25	.38	.30	.25	.35	.28	.23	.32	.26	.22	.30	.24	.20	.18
9.0	.37	.28	.22	.35	.27	.22	.32	.25	.21	.30	.24	.19	.27	.22	.18	.16
10.0	.34	.25	.20	.32	.25	.20	.30	.23	.19	.28	.22	.18	.25	.20	.17	.15



C Range: 0 - 360DEG
 C Interval: 22.5DEG
 Test Speed: 10.0deg/s
 Temperature:25.1DEG
 Operators:Hill
 Test Date:2019-12-05

γ Range: 0 - 180DEG
 γ Interval: 1.0DEG
 Test System: GO-R5000_V2 SYSTEM V2.0.351
 Humidity:44%
 Test Distance:2.485m [K=1.0000]
 Remarks:

WEC AND CCEC

Test:U:119.9V I:0.1034A P:11.55W PF:0.9316 Lamp Flux:848.119x1 lm		
NAME: LED Luminaires	TYPE:N/A	WEIGHT:N/A
SPEC.:N/A	DIM.: N/A	SERIAL No.:N/A
MFR.:	SUR.:N/A	Shielding Angle:N/A

ρcc	80%			70%			50%			30%			10%			0
ρw	50%	30%	10%	50%	30%	10%	50%	30%	10%	50%	30%	10%	50%	30%	10%	0
ρfc	20%			20%			20%			20%			20%			0
RCR	RCR:Room Cavity Ratio						Wall Exitance Coefficients(WEC)									
0.0																
1.0	.377	.215	.068	.364	.208	.066	.338	.194	.062	.315	.182	.058	.294	.170	.055	
2.0	.329	.181	.055	.317	.175	.054	.294	.164	.051	.273	.153	.048	.253	.143	.045	
3.0	.294	.156	.047	.283	.151	.046	.262	.142	.043	.243	.133	.041	.225	.124	.038	
4.0	.265	.138	.040	.255	.133	.039	.236	.125	.037	.218	.117	.035	.202	.110	.033	
5.0	.241	.123	.036	.232	.119	.035	.215	.112	.033	.199	.105	.031	.184	.098	.030	
6.0	.221	.111	.032	.213	.108	.031	.197	.101	.029	.182	.095	.028	.169	.089	.026	
7.0	.204	.101	.029	.197	.098	.028	.182	.092	.027	.169	.086	.025	.156	.081	.024	
8.0	.189	.093	.026	.182	.090	.025	.169	.085	.024	.157	.079	.023	.145	.074	.022	
9.0	.177	.085	.024	.170	.083	.023	.158	.078	.022	.146	.073	.021	.135	.069	.020	
10.0	.165	.079	.022	.159	.077	.021	.148	.073	.020	.137	.068	.019	.127	.064	.018	

ρcc	80%			70%			50%			30%			10%			0
ρw	50%	30%	10%	50%	30%	10%	50%	30%	10%	50%	30%	10%	50%	30%	10%	0
ρfc	20%			20%			20%			20%			20%			0
RCR	RCR:Room Cavity Ratio						Ceiling Cavity Exitance Coefficients(CCEC)									
0.0	.349	.349	.349	.299	.299	.299	.204	.204	.204	.117	.117	.117	.037	.037	.037	
1.0	.345	.316	.289	.295	.271	.249	.202	.186	.172	.116	.108	.100	.037	.035	.032	
2.0	.339	.293	.255	.290	.252	.220	.199	.175	.154	.115	.102	.090	.037	.033	.029	
3.0	.331	.277	.233	.284	.239	.202	.195	.166	.142	.113	.097	.084	.036	.031	.027	
4.0	.324	.264	.219	.278	.228	.190	.191	.159	.134	.110	.093	.079	.036	.030	.026	
5.0	.316	.255	.209	.272	.220	.182	.187	.154	.128	.108	.090	.076	.035	.029	.025	
6.0	.309	.247	.202	.265	.214	.176	.183	.150	.124	.106	.088	.074	.034	.029	.024	
7.0	.302	.240	.197	.260	.208	.172	.179	.146	.122	.104	.086	.072	.034	.028	.024	
8.0	.295	.235	.193	.254	.203	.168	.176	.143	.119	.102	.084	.071	.033	.028	.024	
9.0	.289	.230	.190	.249	.200	.166	.173	.140	.118	.100	.083	.070	.033	.027	.023	
10.0	.283	.226	.187	.244	.196	.164	.169	.138	.116	.099	.082	.069	.032	.027	.023	

C Range: 0 - 360DEG
 C Interval: 22.5DEG
 Test Speed: 10.0deg/s
 Temperature:25.1DEG
 Operators:Hill
 Test Date:2019-12-05

γ Range: 0 - 180DEG
 γ Interval: 1.0DEG
 Test System: GO-R5000_V2 SYSTEM V2.0.351
 Humidity:44%
 Test Distance:2.485m [K=1.0000]
 Remarks:

UGR(Unified Glare Rating) Table

Test:U:119.9V I:0.1034A P:11.55W PF:0.9316 Lamp Flux:848.119x1 lm										
NAME: LED Luminaires					TYPE:N/A			WEIGHT:N/A		
SPEC.:N/A					DIM.: N/A			SERIAL No.:N/A		
MFR.:					SUR.:N/A			Shielding Angle:N/A		
ceiling/cavity	0.7	0.7	0.5	0.5	0.3	0.7	0.7	0.5	0.5	0.3
walls	0.5	0.3	0.5	0.3	0.3	0.5	0.3	0.5	0.3	0.3
working plane	0.2	0.2	0.2	0.2	0.2	0.2	0.2	0.2	0.2	0.2
Room dimensions	Viewed crosswise					Viewed endwise				
x = 2H y = 2H	36.9	38.3	37.5	38.8	39.4	39.3	40.6	39.8	41.2	41.8
3H	38.4	39.6	39.0	40.2	40.9	41.8	43.0	42.4	43.6	44.3
4H	39.0	40.1	39.6	40.7	41.4	43.1	44.3	43.7	44.9	45.6
6H	39.3	40.4	39.9	41.0	41.7	44.6	45.7	45.2	46.3	47.0
8H	39.4	40.5	40.0	41.1	41.8	45.4	46.5	46.0	47.1	47.8
12H	39.4	40.5	40.1	41.1	41.8	46.3	47.4	47.0	48.0	48.7
4H 2H	38.2	39.4	38.8	39.9	40.6	39.8	41.0	40.4	41.6	42.3
3H	39.9	41.0	40.6	41.6	42.3	42.6	43.6	43.2	44.2	45.0
4H	40.7	41.6	41.3	42.3	43.0	44.1	45.1	44.8	45.7	46.5
6H	41.2	42.1	41.9	42.8	43.5	45.8	46.6	46.5	47.3	48.1
8H	41.4	42.2	42.1	42.9	43.7	46.7	47.5	47.4	48.2	49.0
12H	41.5	42.2	42.2	42.9	43.8	47.8	48.5	48.5	49.2	50.1
8H 4H	41.7	42.5	42.4	43.2	44.0	44.4	45.2	45.1	45.9	46.7
6H	42.6	43.3	43.4	44.0	44.9	46.4	47.1	47.1	47.8	48.6
8H	43.0	43.6	43.8	44.3	45.2	47.5	48.1	48.3	48.9	49.7
12H	43.3	43.8	44.1	44.6	45.5	48.9	49.4	49.6	50.2	51.1
12H 4H	42.0	42.7	42.7	43.4	44.3	44.4	45.2	45.2	45.9	46.7
6H	43.2	43.8	43.9	44.5	45.4	46.5	47.1	47.2	47.8	48.7
8H	43.7	44.2	44.5	45.0	45.9	47.8	48.3	48.5	49.0	49.9
Variations with the observer position at spacings:										
S = 1.0H	+ 0.1 / - 0.2					+ 0.1 / - 0.1				
1.5H	+ 0.2 / - 0.3					+ 0.2 / - 0.3				
2.0H	+ 0.3 / - 0.5					+ 0.2 / - 0.4				

CIE Pub.117 Corrected 848.1 lm Total Lamp Luminous Flux. (8log(F/F0) = -0.6)

C Range: 0 - 360DEG
 C Interval: 22.5DEG
 Test Speed: 10.0deg/s
 Temperature:25.1DEG
 Operators:Hill
 Test Date:2019-12-05

γ Range: 0 - 180DEG
 γ Interval: 1.0DEG
 Test System: GO-R5000_V2 SYSTEM V2.0.351
 Humidity:44%
 Test Distance:2.485m [K=1.0000]
 Remarks:

UTILIZATION FACTORS TABLE

Test:U:119.9V I:0.1034A P:11.55W PF:0.9316 Lamp Flux:848.119x1 lm		
NAME: LED Luminaires	TYPE:N/A	WEIGHT:N/A
SPEC.:N/A	DIM.: N/A	SERIAL No.:N/A
MFR.:	SUR.:N/A	Shielding Angle:N/A

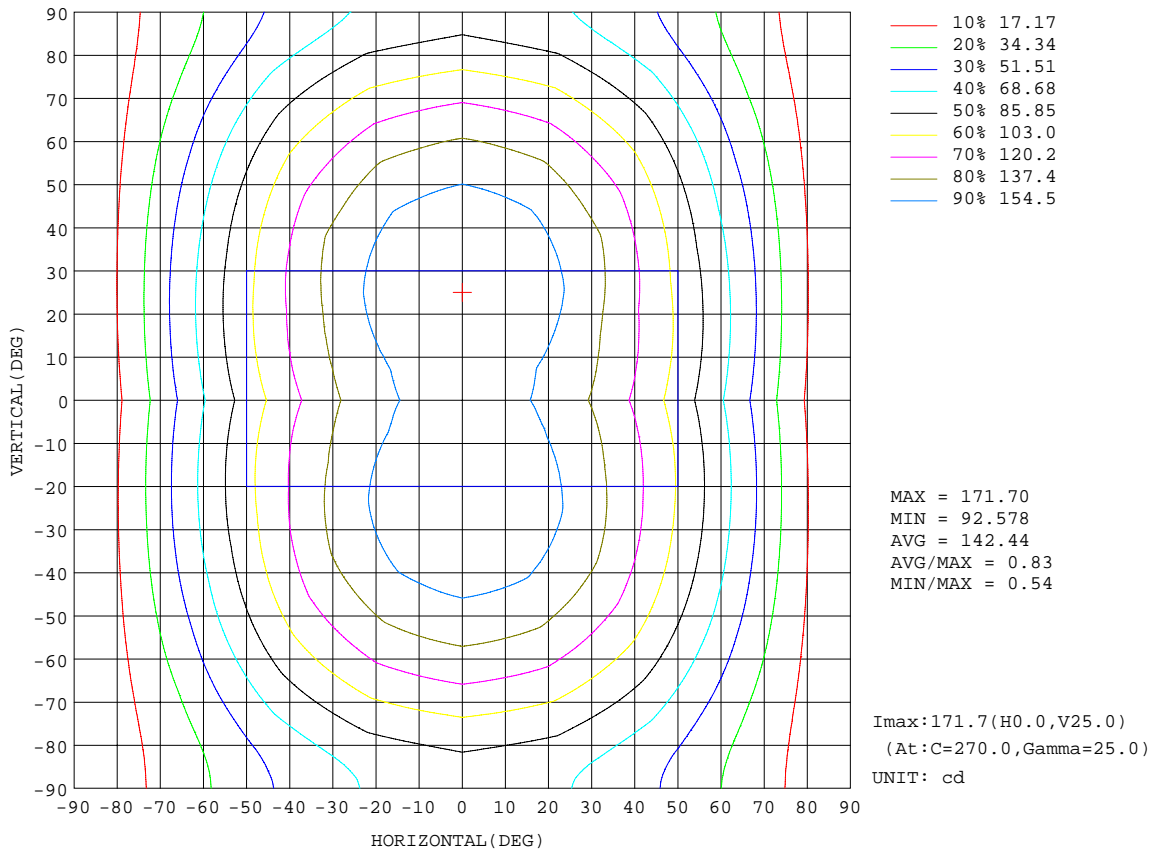
REFLECTANCE										
Ceiling	0.8	0.8	0.8	0.7	0.7	0.7	0.5	0.5	0.5	0
Walls	0.7	0.5	0.3	0.7	0.5	0.3	0.7	0.5	0.3	0
Working plane	0.2	0.2	0.2	0.2	0.2	0.2	0.2	0.2	0.2	0
ROOM INDEX	UTILIZATION FACTORS(PERCENT) $k(RI) \times RCR = 5$									
k = 0.60	47	34	27	45	34	27	43	33	26	19
0.80	56	43	35	54	42	34	51	40	33	25
1.00	64	51	42	62	49	42	58	50	40	31
1.25	71	58	49	68	56	48	64	54	47	37
1.50	76	64	55	73	62	54	68	58	51	41
2.00	83	72	64	80	70	62	74	66	59	47
2.50	88	78	70	84	75	68	78	70	64	51
3.00	92	82	75	88	79	73	81	74	68	54
4.00	96	88	82	92	85	79	85	79	74	59
5.00	99	92	87	95	89	84	87	82	78	62
ROOM INDEX	UF(total)									Direct
According to DIN EN 13032-2 2004			Suspended				SHRNOM = 1.25			

C Range: 0 - 360DEG
 C Interval: 22.5DEG
 Test Speed: 10.0deg/s
 Temperature:25.1DEG
 Operators:Hill
 Test Date:2019-12-05

γ Range: 0 - 180DEG
 γ Interval: 1.0DEG
 Test System: GO-R5000_V2 SYSTEM V2.0.351
 Humidity:44%
 Test Distance:2.485m [K=1.0000]
 Remarks:

ISOCANDELA DIAGRAM

Test:U:119.9V I:0.1034A P:11.55W PF:0.9316 Lamp Flux:848.119x1 lm		
NAME: LED Luminaires	TYPE:N/A	WEIGHT:N/A
SPEC.:N/A	DIM.: N/A	SERIAL No.:N/A
MFR.:	SUR.:N/A	Shielding Angle:N/A

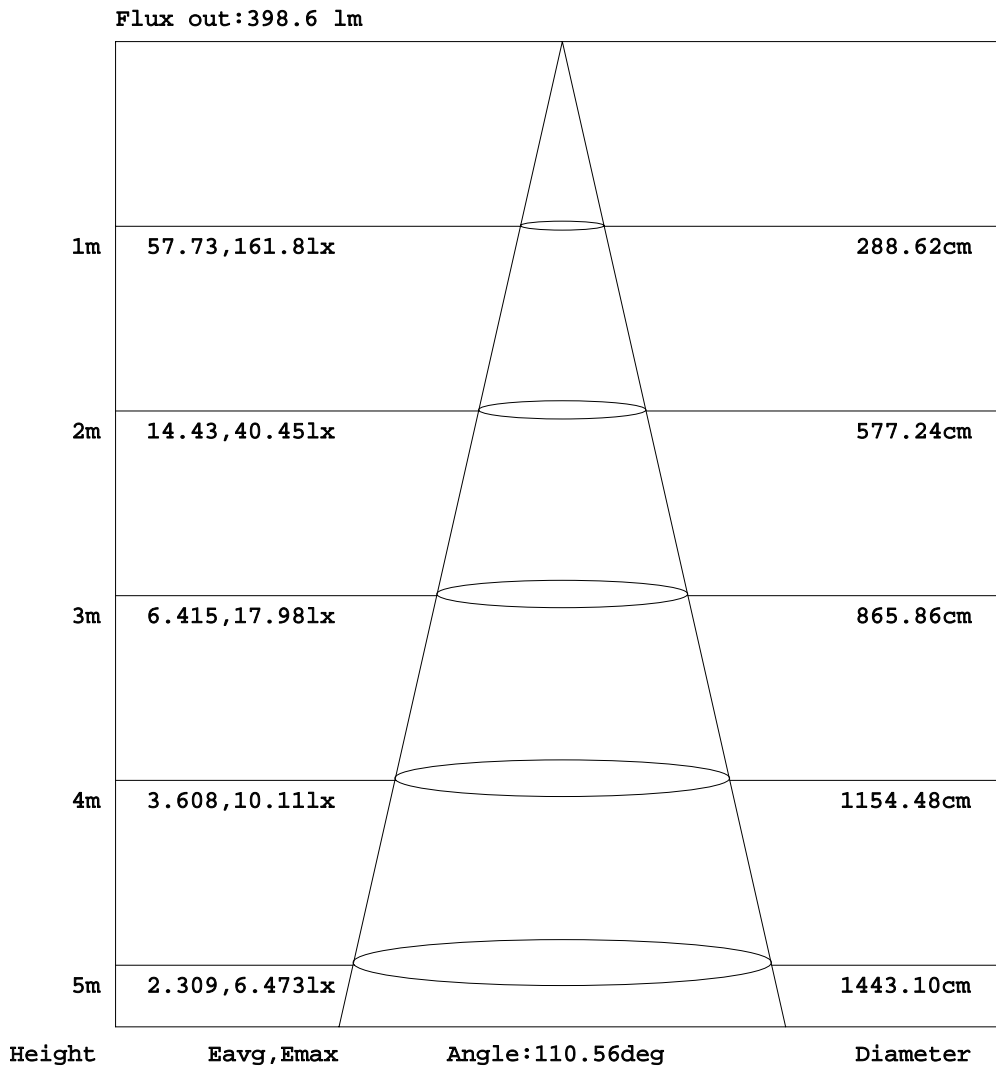


C Range: 0 - 360DEG
 C Interval: 22.5DEG
 Test Speed: 10.0deg/s
 Temperature: 25.1DEG
 Operators: Hill
 Test Date: 2019-12-05

γ Range: 0 - 180DEG
 γ Interval: 1.0DEG
 Test System: GO-R5000_V2 SYSTEM V2.0.351
 Humidity: 44%
 Test Distance: 2.485m [K=1.0000]
 Remarks:

AAI Figure

Test:U:119.9V I:0.1034A P:11.55W PF:0.9316 Lamp Flux:848.119x1 lm		
NAME: LED Luminaires	TYPE:N/A	WEIGHT:N/A
SPEC.:N/A	DIM.: N/A	SERIAL No.:N/A
MFR.:	SUR.:N/A	Shielding Angle:N/A



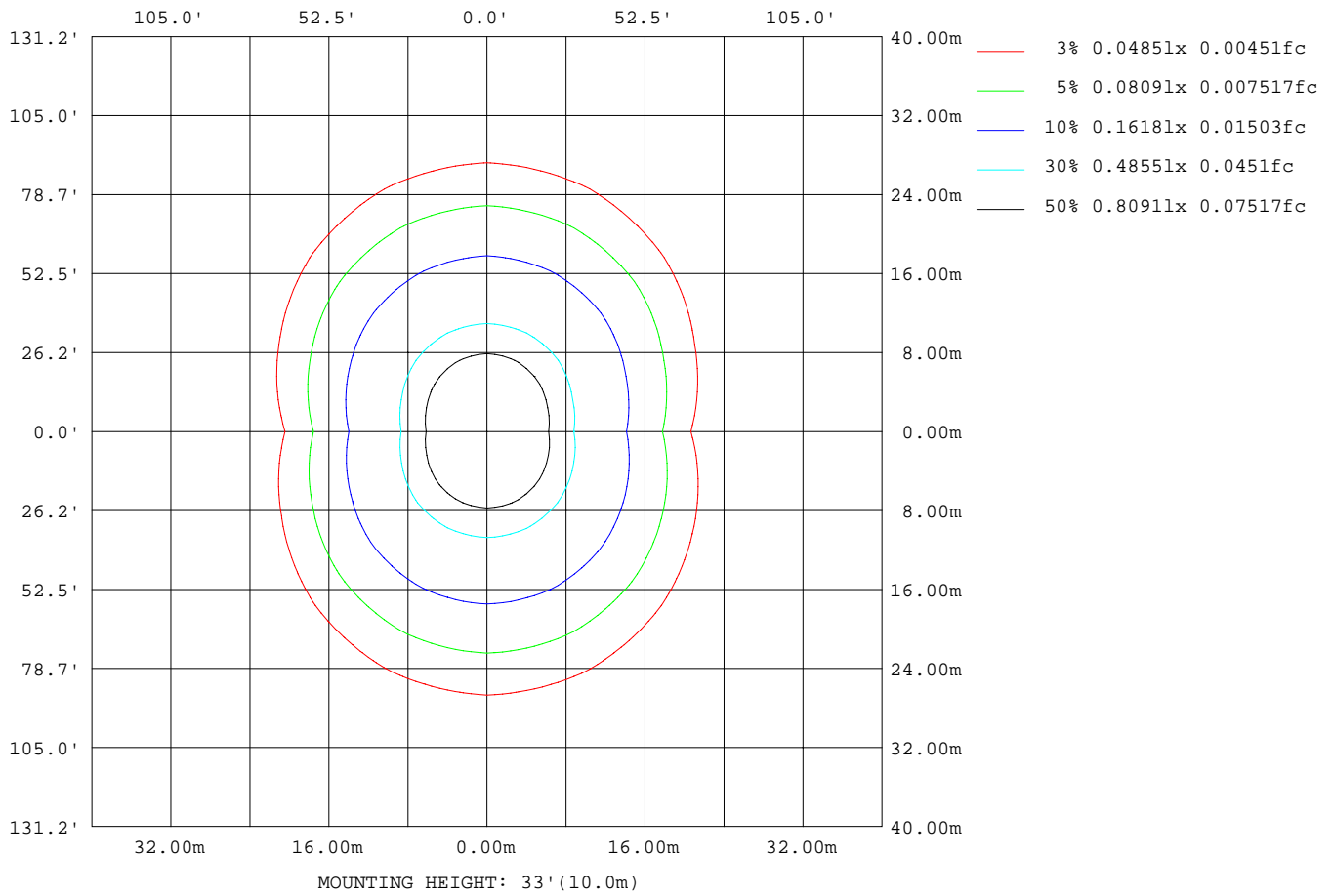
Note:The Curves indicate the illuminated area and the average illumination when the luminaire is at different distance.

C Range: 0 - 360DEG
 C Interval: 22.5DEG
 Test Speed: 10.0deg/s
 Temperature:25.1DEG
 Operators:Hill
 Test Date:2019-12-05

γ Range: 0 - 180DEG
 γInterval: 1.0DEG
 Test System: GO-R5000_V2 SYSTEM V2.0.351
 Humidity:44%
 Test Distance:2.485m [K=1.0000]
 Remarks:

ISOLUX DIAGRAM

Test:U:119.9V I:0.1034A P:11.55W PF:0.9316 Lamp Flux:848.119x1 lm		
NAME: LED Luminaires	TYPE:N/A	WEIGHT:N/A
SPEC.:N/A	DIM.: N/A	SERIAL No.:N/A
MFR.:	SUR.:N/A	Shielding Angle:N/A



C Range: 0 - 360DEG
 C Interval: 22.5DEG
 Test Speed: 10.0deg/s
 Temperature:25.1DEG
 Operators:Hill
 Test Date:2019-12-05

γ Range: 0 - 180DEG
 γ Interval: 1.0DEG
 Test System: GO-R5000_V2 SYSTEM V2.0.351
 Humidity:44%
 Test Distance:2.485m [K=1.0000]
 Remarks:

LED Avg.L Report

Test:U:119.9V I:0.1034A P:11.55W PF:0.9316 Lamp Flux:848.119x1 lm		
NAME: LED Luminaires	TYPE:N/A	WEIGHT:N/A
SPEC.:N/A	DIM.: N/A	SERIAL No.:N/A
MFR.:	SUR.:N/A	Shielding Angle:N/A

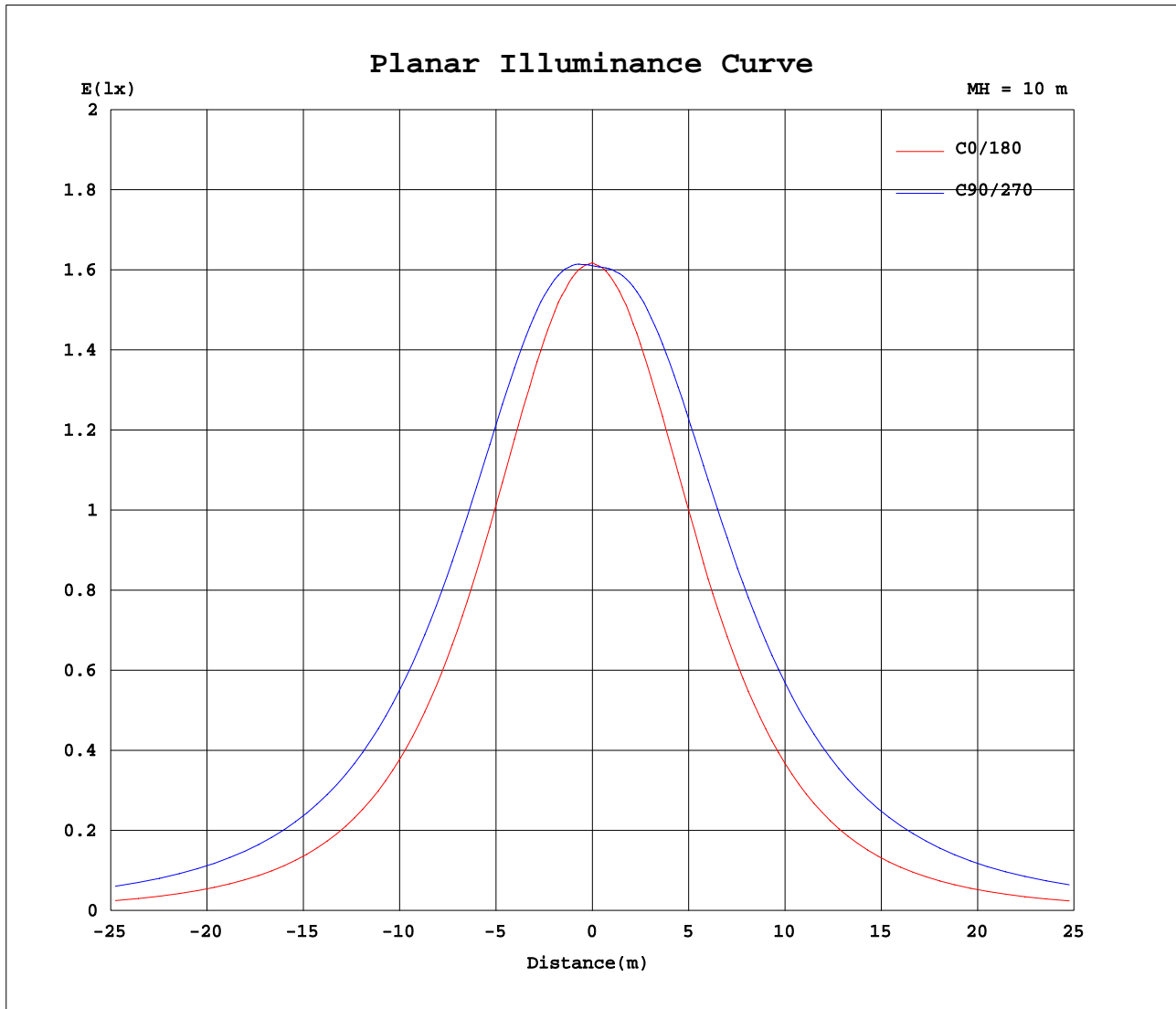
AvgL	cd/m2
L_0~180(65)av	1303464
L_0~180(75)av	1071642
L_0~180(85)av	526223
L_90~270(65)av	2969939
L_90~270(75)av	3998675
L_90~270(85)av	9541631
L_45(65)av	2421657
L_45(75)av	3030448
L_45(85)av	6505482

Standard: GB/T 29293-2012

C Range: 0 - 360DEG
 C Interval: 22.5DEG
 Test Speed: 10.0deg/s
 Temperature:25.1DEG
 Operators:Hill
 Test Date:2019-12-05

γ Range: 0 - 180DEG
 γ Interval: 1.0DEG
 Test System: GO-R5000_V2 SYSTEM V2.0.351
 Humidity:44%
 Test Distance:2.485m [K=1.0000]
 Remarks:

Planar Illuminance Curve



C Range: 0 - 360DEG
 C Interval: 22.5DEG
 Test Speed: 10.0deg/s
 Temperature: 25.1DEG
 Operators: Hill
 Test Date: 2019-12-05

γ Range: 0 - 180DEG
 γ Interval: 1.0DEG
 Test System: GO-R5000_V2 SYSTEM V2.0.351
 Humidity: 44%
 Test Distance: 2.485m [K=1.0000]
 Remarks:

LUMINOUS DISTRIBUTION INTENSITY DATA

Test:U:119.9V I:0.1034A P:11.55W PF:0.9316 Lamp Flux:848.119x1 lm		
NAME: LED Luminaires	TYPE:N/A	WEIGHT:N/A
SPEC.:N/A	DIM.: N/A	SERIAL No.:N/A
MFR.:	SUR.:N/A	Shielding Angle:N/A

Table--1

UNIT: cd

C(DEG) γ (DEG)	0	22.5	45	67.5	90	112.5	135	157.5	180	202.5	225	247.5	270	292.5	315	337.5			
0	161	161	161	161	161	161	161	161	161	161	161	161	161	161	161	161			
5	160	161	162	163	163	163	162	161	160	160	161	162	162	162	161	161			
10	159	160	164	166	166	165	163	160	158	159	162	164	165	165	162	159			
15	155	159	164	168	169	167	163	157	154	156	162	167	169	167	163	157			
20	150	156	163	168	170	168	162	154	148	153	161	168	171	169	162	154			
25	143	151	161	168	170	167	159	149	142	149	160	168	172	169	161	149			
30	136	146	158	166	169	165	156	143	133	143	157	167	171	168	158	144			
35	127	139	154	163	166	162	151	136	124	137	153	165	170	165	154	138			
40	117	131	148	158	162	157	145	128	114	128	148	161	166	162	149	129			
45	106	123	141	152	156	151	138	119	104	120	142	156	161	156	142	121			
50	95.1	113	133	145	149	144	130	110	92.3	111	134	149	155	150	134	111			
55	82.7	102	123	137	141	135	121	98.8	80.1	101	125	141	148	142	125	101			
60	69.9	91.0	113	127	132	126	110	87.3	67.5	89.8	115	132	139	132	115	89.8			
65	56.1	78.7	102	117	122	116	98.9	75.2	54.1	78.1	104	122	129	122	105	77.9			
70	42.2	65.9	89.9	106	111	104	87.0	62.4	40.6	65.8	92.7	111	118	111	92.9	65.4			
75	28.4	52.3	77.6	94.2	99.9	92.7	74.7	48.9	27.1	53.0	80.8	99.7	107	100	80.7	52.5			
80	15.4	39.8	65.8	83.1	89.0	81.7	63.1	36.6	14.5	40.7	68.8	88.2	95.6	88.4	68.6	39.8			
85	4.88	29.5	56.3	74.6	80.8	73.2	53.8	26.8	4.30	30.3	58.6	78.1	85.5	78.1	58.0	29.0			
90	0.15	25.4	52.6	71.0	77.2	69.8	50.4	23.1	0.12	25.1	52.6	71.6	78.8	71.4	51.8	23.3			
95	0.10	24.5	51.3	69.4	75.5	68.2	49.2	22.3	0.10	24.5	51.4	69.8	76.7	69.5	50.4	22.7			
100	0.08	22.7	49.6	67.3	73.2	66.1	47.5	20.3	0.09	23.2	50.0	67.9	74.5	67.6	49.1	21.3			
105	0.09	19.5	46.5	64.2	70.0	63.0	44.5	17.1	0.11	20.5	47.7	65.5	71.9	65.1	46.6	18.7			
110	0.10	15.7	42.6	59.6	65.6	58.5	40.5	13.4	0.14	17.1	44.2	61.7	67.8	61.3	43.2	15.4			
115	0.11	12.1	37.5	54.2	60.0	53.2	35.6	10.4	0.18	13.5	39.6	56.9	62.9	56.5	38.7	12.1			
120	0.13	10.7	31.9	47.9	53.4	47.0	30.1	9.53	0.22	11.3	34.4	51.1	56.9	50.7	33.5	10.5			
125	0.15	9.85	26.1	41.2	46.3	40.3	24.5	8.78	0.22	10.5	28.9	44.6	50.1	44.2	27.9	9.72			
130	0.19	8.88	20.6	34.2	38.9	33.4	19.2	7.95	0.26	9.60	23.3	37.7	42.8	37.3	22.6	8.93			
135	0.23	7.82	17.7	27.3	31.5	26.6	16.9	7.03	0.29	8.56	18.7	30.7	35.4	30.5	18.5	8.11			
140	0.28	6.70	15.5	21.6	24.4	21.3	14.9	6.02	0.31	7.28	16.3	23.7	28.0	23.9	16.6	7.37			
145	0.34	5.53	13.3	18.7	20.6	18.4	12.8	5.02	0.34	5.66	13.7	19.6	22.1	20.3	14.9	6.89			
150	0.38	4.40	11.0	15.6	17.3	15.4	10.6	4.03	0.35	3.88	10.7	16.1	18.6	17.5	13.2	6.57			
155	0.42	3.30	8.62	12.5	13.9	12.3	8.36	3.05	0.37	2.22	7.69	12.5	15.0	14.6	11.4	6.22			
160	0.47	2.28	6.19	9.23	10.3	9.16	6.05	2.14	0.40	1.08	4.88	8.80	11.2	11.4	9.34	5.56			
165	0.47	1.39	3.89	5.99	6.79	5.97	3.83	1.28	0.39	0.57	2.87	5.66	7.60	7.99	6.76	4.25			
170	0.42	0.64	1.92	3.05	3.49	3.06	1.61	0.61	0.37	0.39	1.13	2.79	4.32	4.65	4.03	2.65			
175	0.40	0.37	0.51	0.85	1.03	0.59	0.49	0.41	0.38	0.38	0.55	0.78	1.21	1.87	1.64	0.82			
180	0.46	0.42	0.32	0.27	0.25	0.28	0.30	0.40	0.44	0.44	0.43	0.38	0.31	0.31	0.33	0.35			

C Range: 0 - 360DEG
 C Interval: 22.5DEG
 Test Speed: 10.0deg/s
 Temperature:25.1DEG
 Operators:Hill
 Test Date:2019-12-05

γ Range: 0 - 180DEG
 γInterval: 1.0DEG
 Test System: GO-R5000_V2 SYSTEM V2.0.351
 Humidity:44%
 Test Distance:2.485m [K=1.0000]
 Remarks: