

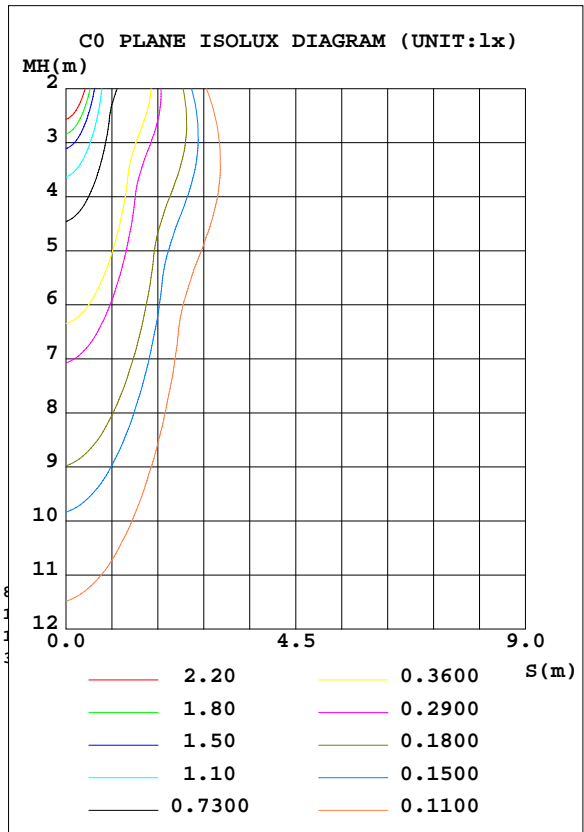
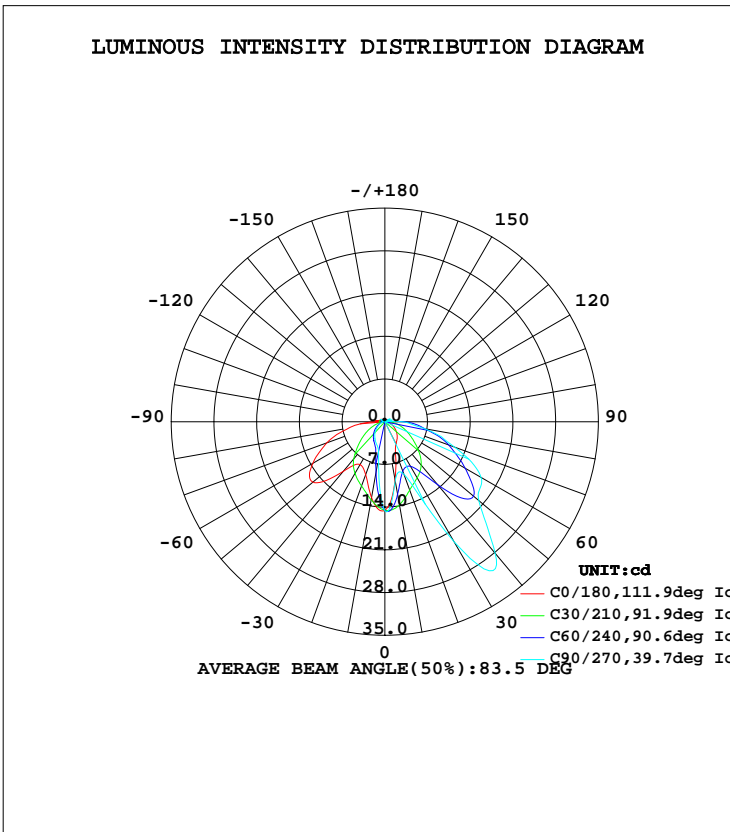


EVERFINE GONIOPHOTOMETERS SYSTEM TEST REPORT

LUMINAIRE PHOTOMETRIC TEST REPORT

Test:U:119.9V I:0.0922A P:2.932W PF:0.2651 Lamp Flux:46.9682x1 lm		
NAME:	TYPE:	WEIGHT:
SPEC.:	DIM.:	SERIAL No.:
MFR.:	SUR.:	PROTECTION ANGLE:

DATA OF LAMP		PHOTOMETRIC DATA Eff: 16.02 lm/W			
MODEL	8918 (horizontal plate)	Imax(cd)	35.44	S/MH(C0/180)	0.78
NOMINAL POWER(W)	2.5	LOR(%)	100.0	S/MH(C90/270)	0.28
RATED VOLTAGE(V)	120	TOTAL FLUX(lm)	46.968	η UP, DN(C0-180)	3.0,73.4
NOMINAL FLUX(lm)	46.9682	CIE CLASS	DIRECT	η UP, DN(C180-360)	2.4,21.2
LAMPS INSIDE	1	η up(%)	5.4	CIBSE SHR NOM	0.00
TEST VOLTAGE(V)		η down(%)	94.6	CIBSE SHR MAX	1.00



C Range: 0 - 360DEG
 C Interval: 15.0DEG
 Test Speed: HIGH
 Temperature:25.3DEG
 Operators:
 Test Date:2020-05-23

γ Range: 0 - 180DEG
 γ Interval: 1.0DEG
 Test System:EVERFINE GO-2000B_V1 SYSTEM V2.0.291
 Humidity:65.0%
 Test Distance:7.500m [K=1.0000]
 Remarks:



EVERFINE GONIOPHOTOMETERS SYSTEM TEST REPORT

ZONAL FLUX DIAGRAM

ZONAL FLUX DIAGRAM:

γ	C0	C45	C90	C135	C180	C225	C270	C315	γ	Φ zone	Φ total	lum, lamp
10	9.662	13.59	9.831	9.691	12.63	10.68	5.956	5.786	0- 10	1.111	1.111	2.37,2.37
20	5.075	10.42	9.170	9.726	9.233	6.792	3.966	3.967	10- 20	2.322	3.433	7.31,7.31
30	3.825	8.418	22.69	26.95	8.115	4.431	3.254	3.274	20- 30	4.028	7.461	15.9,15.9
40	3.167	7.637	28.14	27.55	10.64	3.382	2.564	2.569	30- 40	7.278	14.74	31.4,31.4
50	2.450	8.262	20.12	19.86	15.39	2.585	1.836	1.869	40- 50	8.126	22.87	48.7,48.7
60	1.738	9.131	18.22	18.40	13.65	1.811	1.224	1.275	50- 60	7.973	30.84	65.7,65.7
70	1.091	8.198	12.16	11.48	10.12	1.083	0.7313	0.7975	60- 70	6.799	37.64	80.1,80.1
80	0.5743	5.405	6.604	5.260	6.000	0.5203	0.4043	0.4585	70- 80	4.538	42.17	89.8,89.8
90	0.3275	2.700	2.846	2.019	1.264	0.2583	0.2657	0.2774	80- 90	2.252	44.43	94.6,94.6
100	0.3071	0.6006	0.5337	0.5216	1.251	0.7053	0.4508	0.2158	90-100	0.7147	45.14	96.1,96.1
110	0.5232	0.3708	0.1618	0.9128	0.6111	0.1925	0.2311	0.2655	100-110	0.4358	45.58	97,97
120	0.5430	0.3463	0.9823	0.1618	0.8124	0.4548	0.7779	0.2657	110-120	0.4630	46.04	98,98
130	0.4699	0.1926	0.3242	0.1618	0.6121	0.2503	0.3923	0.2426	120-130	0.3832	46.42	98.8,98.8
140	0.4005	0.1926	0.1810	0.1463	0.5043	0.2311	0.2542	0.2388	130-140	0.2218	46.64	99.3,99.3
150	0.2465	0.1965	0.1695	0.1541	0.2003	0.2234	0.2542	0.2195	140-150	0.1426	46.79	99.6,99.6
160	0.2426	0.2542	0.2190	0.1733	0.2274	0.2234	0.3082	0.2425	150-160	0.0963	46.88	99.8,99.8
170	0.2388	0.2080	0.1928	0.1733	0.2157	0.2312	0.2233	0.2196	160-170	0.0655	46.95	100,100
180	0.2195	0.2157	0.1926	0.1810	0.2157	0.2157	0.2041	0.1849	170-180	0.0191	46.97	100,100
DEG	LUMINOUS INTENSITY:cd									UNIT:lm		

C Range: 0 - 360DEG
 C Interval: 15.0DEG
 Test Speed: HIGH
 Temperature:25.3DEG
 Operators:
 Test Date:2020-05-23

γ Range: 0 - 180DEG
 γ Interval: 1.0DEG
 Test System:EVERFINE GO-2000B_V1 SYSTEM V2.0.291
 Humidity:65.0%
 Test Distance:7.500m [K=1.0000]
 Remarks:

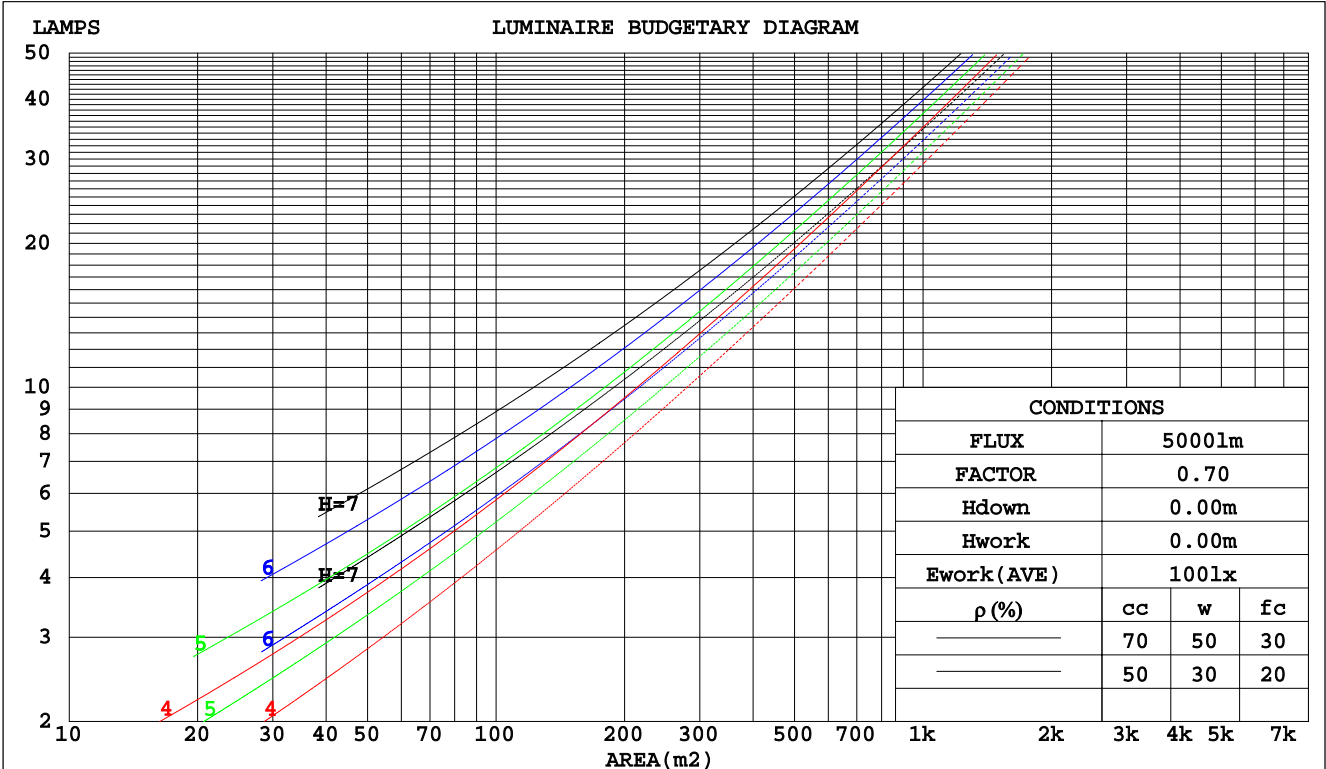


EVERFINE GONIOPHOTOMETERS SYSTEM TEST REPORT

CU AND LUMINAIRE BUDGETARY ESTIMATE DIAGRAM

Test:U:119.9V I:0.0922A P:2.932W PF:0.2651 Lamp Flux:46.9682x1 lm		
NAME:	TYPE:	WEIGHT:
SPEC.:	DIM.:	SERIAL No.:
MFR.:	SUR.:	PROTECTION ANGLE:

pcc	80%			70%			50%			30%			10%			0
	50%	30%	10%	50%	30%	10%	50%	30%	10%	50%	30%	10%	50%	30%	10%	0
pw																0
pfc																0
RCR	RCR:Room Cavity Ratio			Coefficients of Utilization(CU)												
0.0	1.18	1.18	1.18	1.14	1.14	1.14	1.08	1.08	1.08	1.02	1.02	1.02	.97	.97	.97	.95
1.0	.00	.94	.90	.97	.92	.88	.91	.88	.84	.86	.83	.80	.82	.79	.77	.75
2.0	.85	.77	.70	.82	.75	.69	.78	.72	.67	.74	.69	.64	.70	.66	.62	.59
3.0	.73	.64	.57	.71	.63	.56	.67	.60	.54	.64	.58	.52	.60	.55	.51	.48
4.0	.64	.54	.47	.62	.53	.46	.59	.51	.45	.56	.49	.44	.53	.47	.42	.40
5.0	.56	.46	.39	.55	.46	.39	.52	.44	.38	.49	.42	.37	.47	.41	.36	.33
6.0	.50	.40	.33	.49	.40	.33	.46	.38	.32	.44	.37	.32	.42	.36	.31	.29
7.0	.45	.36	.29	.44	.35	.29	.42	.34	.28	.40	.33	.27	.38	.32	.27	.25
8.0	.41	.32	.25	.40	.31	.25	.38	.30	.25	.36	.29	.24	.35	.28	.24	.21
9.0	.37	.28	.22	.36	.28	.22	.35	.27	.22	.33	.26	.21	.32	.25	.21	.19
10.0	.34	.26	.20	.33	.25	.20	.32	.24	.19	.30	.24	.19	.29	.23	.19	.17



C Range: 0 - 360DEG
 C Interval: 15.0DEG
 Test Speed: HIGH
 Temperature: 25.3DEG
 Operators:
 Test Date: 2020-05-23

γ Range: 0 - 180DEG
 γ Interval: 1.0DEG
 Test System: EVERFINE GO-2000B_V1 SYSTEM V2.0.291
 Humidity: 65.0%
 Test Distance: 7.500m [K=1.0000]
 Remarks:



EVERFINE GONIOPHOTOMETERS SYSTEM TEST REPORT

WEC AND CCEC

Test:U:119.9V I:0.0922A P:2.932W PF:0.2651 Lamp Flux:46.9682x1 lm															
NAME:				TYPE:				WEIGHT:							
SPEC.:				DIM.:				SERIAL No.:							
MFR.:				SUR.:				PROTECTION ANGLE:							

ρcc	80%			70%			50%			30%			10%			0
ρw	50%	30%	10%	50%	30%	10%	50%	30%	10%	50%	30%	10%	50%	30%	10%	0
ρfc	20%			20%			20%			20%			20%			0
RCR	RCR:Room Cavity Ratio						Wall Exitance Coefficients(WEC)									
0.0																
1.0	.368	.209	.066	.359	.205	.065	.342	.196	.063	.327	.189	.061	.313	.181	.058	
2.0	.332	.182	.056	.324	.179	.055	.309	.172	.053	.296	.166	.052	.283	.160	.050	
3.0	.301	.160	.048	.294	.157	.047	.280	.152	.046	.268	.147	.045	.257	.142	.044	
4.0	.274	.142	.042	.267	.140	.041	.255	.135	.040	.244	.131	.040	.234	.127	.039	
5.0	.250	.127	.037	.244	.125	.037	.234	.122	.036	.224	.118	.035	.214	.114	.034	
6.0	.230	.115	.033	.225	.114	.033	.215	.110	.032	.206	.107	.031	.198	.104	.031	
7.0	.212	.105	.030	.208	.104	.030	.199	.101	.029	.191	.098	.028	.183	.095	.028	
8.0	.197	.096	.027	.193	.095	.027	.185	.092	.026	.178	.090	.026	.171	.088	.026	
9.0	.184	.089	.025	.180	.088	.025	.173	.085	.024	.166	.083	.024	.160	.081	.023	
10.0	.172	.082	.023	.169	.081	.023	.162	.079	.022	.156	.077	.022	.150	.075	.022	

ρcc	80%			70%			50%			30%			10%			0
ρw	50%	30%	10%	50%	30%	10%	50%	30%	10%	50%	30%	10%	50%	30%	10%	0
ρfc	20%			20%			20%			20%			20%			0
RCR	RCR:Room Cavity Ratio						Ceiling Cavity Exitance Coefficients(CCEC)									
0.0	.232	.232	.232	.198	.198	.198	.135	.135	.135	.078	.078	.078	.025	.025	.025	
1.0	.226	.197	.171	.193	.169	.147	.132	.116	.102	.076	.067	.059	.024	.022	.019	
2.0	.220	.174	.135	.188	.149	.117	.129	.103	.081	.074	.060	.048	.024	.019	.016	
3.0	.213	.157	.112	.182	.135	.097	.125	.094	.068	.072	.055	.040	.023	.018	.013	
4.0	.205	.144	.097	.176	.124	.084	.121	.087	.059	.070	.051	.035	.023	.017	.012	
5.0	.198	.134	.087	.170	.116	.075	.117	.081	.053	.068	.047	.032	.022	.015	.010	
6.0	.190	.126	.079	.164	.109	.069	.113	.076	.049	.065	.045	.029	.021	.015	.010	
7.0	.183	.119	.074	.158	.103	.064	.109	.072	.046	.063	.043	.027	.020	.014	.009	
8.0	.176	.113	.070	.152	.098	.061	.105	.069	.043	.061	.041	.026	.020	.013	.009	
9.0	.170	.108	.067	.146	.094	.058	.101	.066	.041	.059	.039	.025	.019	.013	.008	
10.0	.164	.104	.064	.141	.090	.056	.098	.064	.040	.057	.038	.024	.019	.012	.008	

C Range: 0 - 360DEG
 C Interval: 15.0DEG
 Test Speed: HIGH
 Temperature:25.3DEG
 Operators:
 Test Date:2020-05-23

γ Range: 0 - 180DEG
 γ Interval: 1.0DEG
 Test System:EVERFINE GO-2000B_V1 SYSTEM V2.0.291
 Humidity:65.0%
 Test Distance:7.500m [K=1.0000]
 Remarks:



EVERFINE GONIOPHOTOMETERS SYSTEM TEST REPORT

UGR(Unified Glare Rating) Table

Test:U:119.9V I:0.0922A P:2.932W PF:0.2651 Lamp Flux:46.9682x1 lm										
NAME:			TYPE:			WEIGHT:				
SPEC.:			DIM.:			SERIAL No.:				
MFR.:			SUR.:			PROTECTION ANGLE:				
ceiling/cavity	0.7	0.7	0.5	0.5	0.3	0.7	0.7	0.5	0.5	0.3
walls	0.5	0.3	0.5	0.3	0.3	0.5	0.3	0.5	0.3	0.3
working plane	0.2	0.2	0.2	0.2	0.2	0.2	0.2	0.2	0.2	0.2
Room dimensions	Viewed crosswise					Viewed endwise				
x = 2H y = 2H	1.5	3.0	1.8	3.4	3.7	11.3	12.9	11.7	13.2	13.5
3H	2.0	3.5	2.4	3.8	4.2	13.5	15.0	13.9	15.3	15.7
4H	2.2	3.6	2.6	3.9	4.3	14.5	15.8	14.9	16.2	16.6
6H	2.3	3.6	2.7	4.0	4.4	15.3	16.6	15.7	17.0	17.4
8H	2.4	3.7	2.8	4.1	4.5	15.6	16.9	16.1	17.3	17.7
12H	2.5	3.7	2.9	4.1	4.6	16.0	17.2	16.4	17.6	18.0
4H 2H	5.5	6.9	5.9	7.3	7.7	11.5	12.9	11.9	13.2	13.6
3H	6.3	7.5	6.7	7.9	8.3	14.1	15.3	14.5	15.7	16.1
4H	6.5	7.6	6.9	8.0	8.5	15.2	16.4	15.7	16.8	17.2
6H	6.6	7.6	7.0	8.0	8.5	16.3	17.3	16.8	17.8	18.3
8H	6.6	7.5	7.1	8.0	8.5	16.8	17.7	17.3	18.2	18.7
12H	6.6	7.5	7.1	8.0	8.5	17.3	18.1	17.8	18.6	19.1
8H 4H	9.1	10.0	9.6	10.5	11.0	15.4	16.3	15.9	16.8	17.3
6H	9.4	10.2	10.0	10.7	11.3	16.8	17.6	17.3	18.1	18.6
8H	9.5	10.2	10.1	10.7	11.3	17.5	18.2	18.0	18.7	19.3
12H	9.6	10.2	10.1	10.7	11.3	18.2	18.8	18.7	19.3	19.9
12H 4H	9.6	10.5	10.2	11.0	11.5	15.4	16.2	15.9	16.7	17.2
6H	10.4	11.1	11.0	11.6	12.2	16.8	17.5	17.4	18.0	18.6
8H	10.7	11.3	11.2	11.8	12.4	17.6	18.2	18.2	18.8	19.4
Variations with the observer position at spacings:										
S = 1.0H	+ 0.1 / - 0.2					+ 0.0 / - 0.1				
1.5H	+ 0.1 / - 0.1					+ 0.2 / - 0.2				
2.0H	+ 0.2 / - 0.4					+ 0.2 / - 0.4				

CIE Pub.117 Corrected 46.97 lm Total Lamp Luminous Flux. (8log(F/F0) = -10.6)

C Range: 0 - 360DEG
 C Interval: 15.0DEG
 Test Speed: HIGH
 Temperature:25.3DEG
 Operators:
 Test Date:2020-05-23

γ Range: 0 - 180DEG
 γ Interval: 1.0DEG
 Test System:EVERFINE GO-2000B_V1 SYSTEM V2.0.291
 Humidity:65.0%
 Test Distance:7.500m [K=1.0000]
 Remarks:



EVERFINE GONIOPHOTOMETERS SYSTEM TEST REPORT

UTILIZATION FACTORS TABLE

Test:U:119.9V I:0.0922A P:2.932W PF:0.2651 Lamp Flux:46.9682x1 lm		
NAME:	TYPE:	WEIGHT:
SPEC.:	DIM.:	SERIAL No.:
MFR.:	SUR.:	PROTECTION ANGLE:

REFLECTANCE										
Ceiling	0.8	0.8	0.8	0.7	0.7	0.7	0.5	0.5	0.5	0
Walls	0.7	0.5	0.3	0.7	0.5	0.3	0.7	0.5	0.3	0
Working plane	0.2	0.2	0.2	0.2	0.2	0.2	0.2	0.2	0.2	0
ROOM INDEX	UTILIZATION FACTORS(PERCENT) $k(RI) \times RCR = 5$									
k = 0.60	50	37	29	49	37	29	47	36	29	22
0.80	60	47	38	58	46	38	56	45	38	30
1.00	68	56	47	67	55	47	64	56	46	38
1.25	76	64	55	74	63	55	71	61	54	45
1.50	81	69	61	79	68	61	75	66	59	50
2.00	89	78	71	86	77	70	82	74	68	58
2.50	93	84	77	91	82	75	86	79	73	63
3.00	97	89	82	94	87	81	89	83	78	67
4.00	102	95	89	99	92	87	93	88	84	73
5.00	105	98	93	102	96	91	96	92	88	76
ROOM INDEX	UF(total)									Direct
According to DIN EN 13032-2 2004			Suspended				SHRNOM = 1.25			

C Range: 0 - 360DEG
 C Interval: 15.0DEG
 Test Speed: HIGH
 Temperature:25.3DEG
 Operators:
 Test Date:2020-05-23

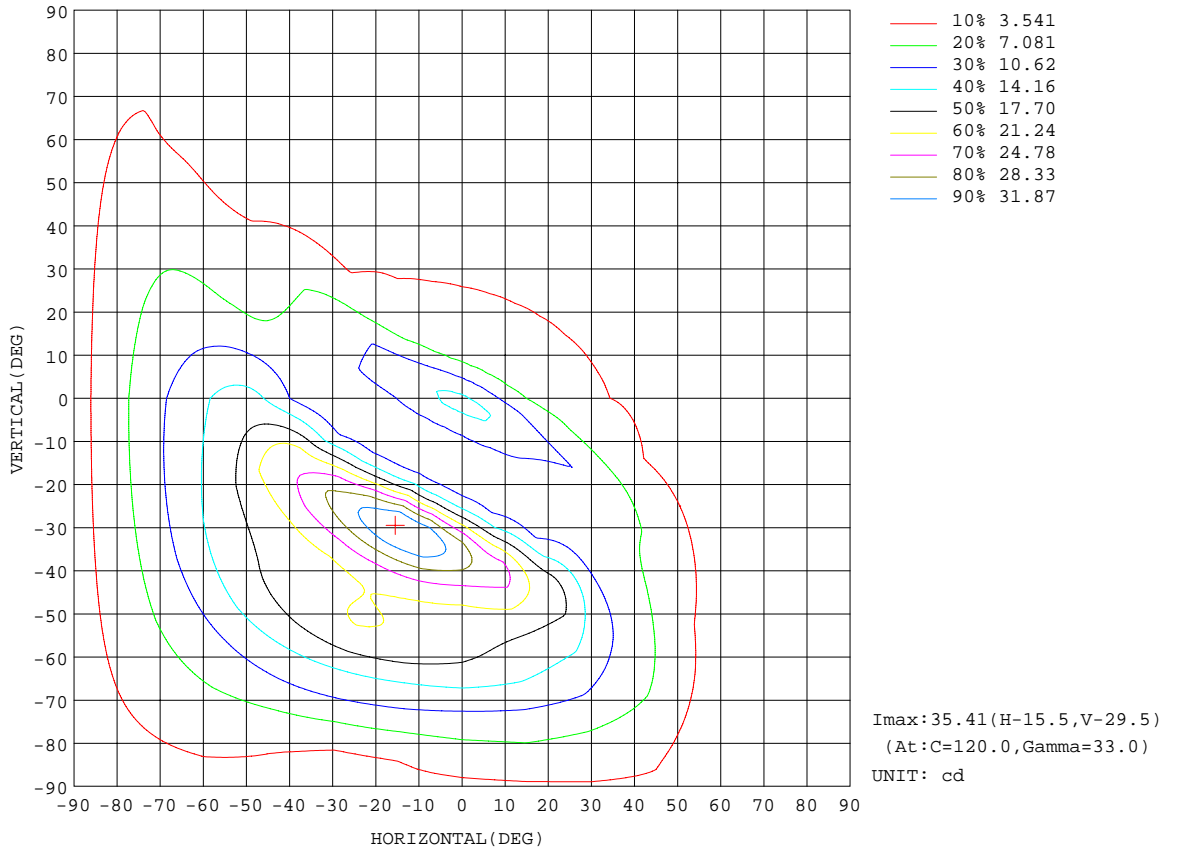
γ Range: 0 - 180DEG
 γ Interval: 1.0DEG
 Test System:EVERFINE GO-2000B_V1 SYSTEM V2.0.291
 Humidity:65.0%
 Test Distance:7.500m [K=1.0000]
 Remarks:



EVERFINE GONIOPHOTOMETERS SYSTEM TEST REPORT

ISOCANDELA DIAGRAM

Test:U:119.9V I:0.0922A P:2.932W PF:0.2651 Lamp Flux:46.9682x1 lm		
NAME:	TYPE:	WEIGHT:
SPEC.:	DIM.:	SERIAL No.:
MFR.:	SUR.:	PROTECTION ANGLE:



C Range: 0 - 360DEG
 C Interval: 15.0DEG
 Test Speed: HIGH
 Temperature: 25.3DEG
 Operators:
 Test Date: 2020-05-23

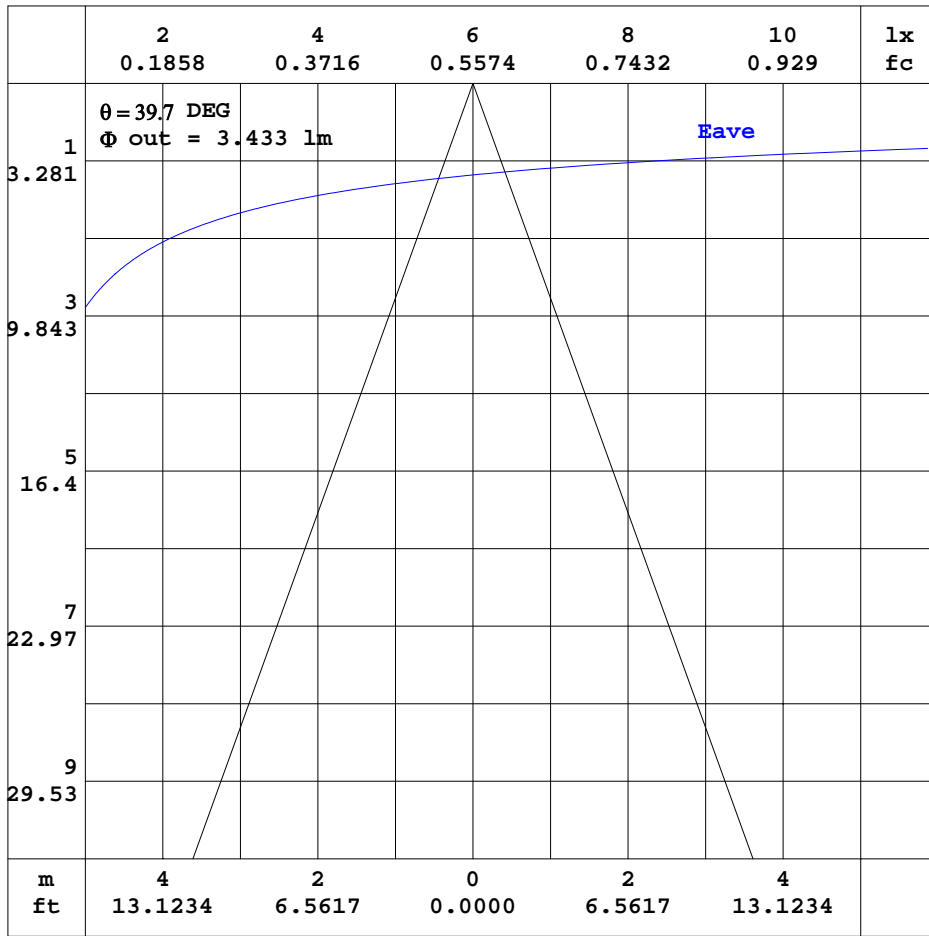
γ Range: 0 - 180DEG
 γ Interval: 1.0DEG
 Test System: EVERFINE GO-2000B_V1 SYSTEM V2.0.291
 Humidity: 65.0%
 Test Distance: 7.500m [K=1.0000]
 Remarks:



EVERFINE GONIOPHOTOMETERS SYSTEM TEST REPORT

AAI CURVES

Test:U:119.9V I:0.0922A P:2.932W PF:0.2651 Lamp Flux:46.9682x1 lm		
NAME:	TYPE:	WEIGHT:
SPEC.:	DIM.:	SERIAL No.:
MFR.:	SUR.:	PROTECTION ANGLE:



Note:The Curves indicate the illuminated area and the average illumination when the luminaire is at different distance.

C Range: 0 - 360DEG
 C Interval: 15.0DEG
 Test Speed: HIGH
 Temperature:25.3DEG
 Operators:
 Test Date:2020-05-23

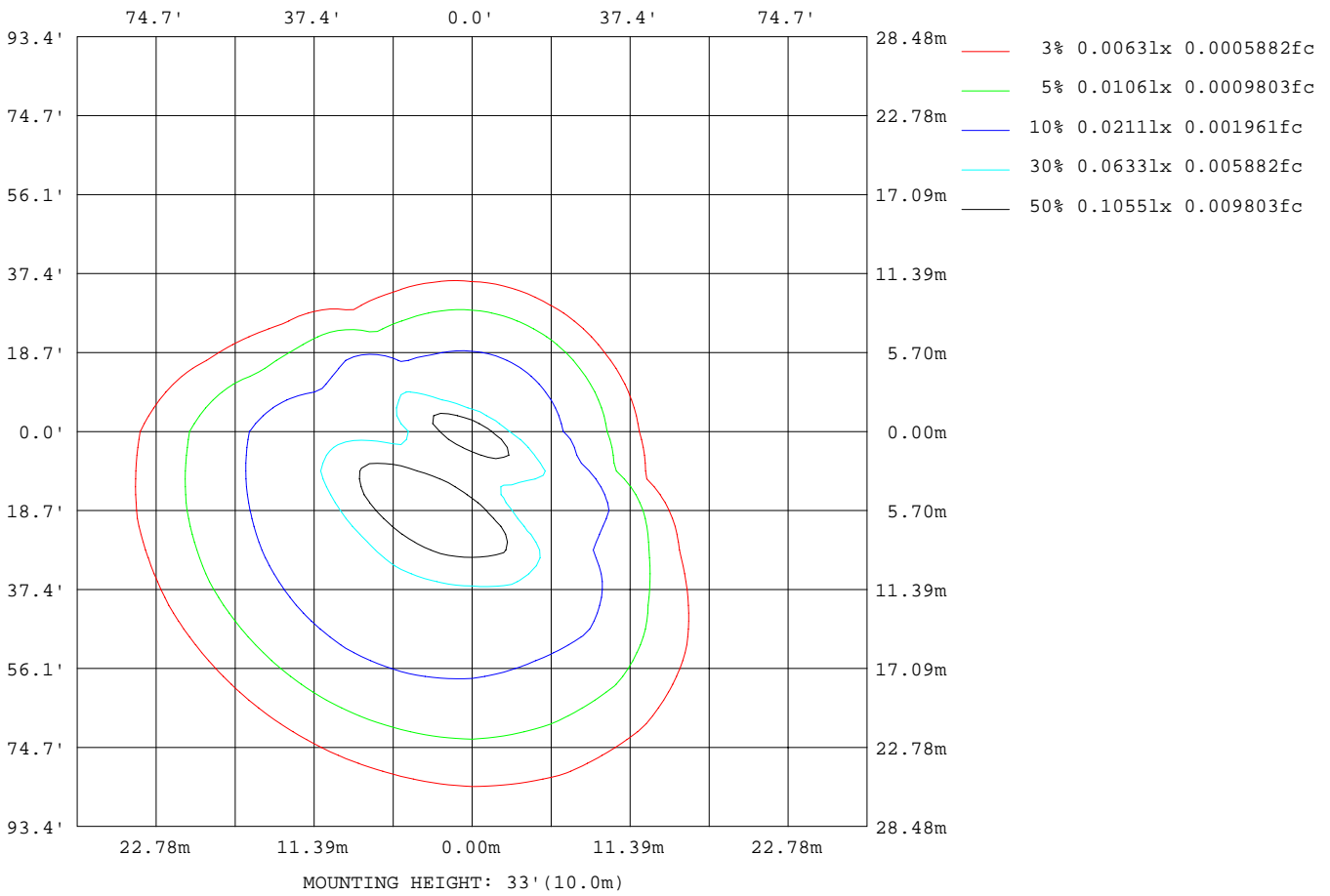
γ Range: 0 - 180DEG
 γ Interval: 1.0DEG
 Test System:EVERFINE GO-2000B_V1 SYSTEM V2.0.291
 Humidity:65.0%
 Test Distance:7.500m [K=1.0000]
 Remarks:



EVERFINE GONIOPHOTOMETERS SYSTEM TEST REPORT

ISOLUX DIAGRAM

Test:U:119.9V I:0.0922A P:2.932W PF:0.2651 Lamp Flux:46.9682x1 lm		
NAME:	TYPE:	WEIGHT:
SPEC.:	DIM.:	SERIAL No.:
MFR.:	SUR.:	PROTECTION ANGLE:



C Range: 0 - 360DEG
 C Interval: 15.0DEG
 Test Speed: HIGH
 Temperature: 25.3DEG
 Operators:
 Test Date: 2020-05-23

γ Range: 0 - 180DEG
 γ Interval: 1.0DEG
 Test System: EVERFINE GO-2000B_V1 SYSTEM V2.0.291
 Humidity: 65.0%
 Test Distance: 7.500m [K=1.0000]
 Remarks:



EVERFINE GONIOPHOTOMETERS SYSTEM TEST REPORT

LED Avg.L Report

Test:U:119.9V I:0.0922A P:2.932W PF:0.2651 Lamp Flux:46.9682x1 lm		
NAME:	TYPE:	WEIGHT:
SPEC.:	DIM.:	SERIAL No.:
MFR.:	SUR.:	PROTECTION ANGLE:

AvgL	cd/m2
L_0~180(65)av	157
L_0~180(75)av	174
L_0~180(85)av	257
L_90~270(65)av	197
L_90~270(75)av	196
L_90~270(85)av	263
L_45(65)av	156
L_45(75)av	165
L_45(85)av	237

Standard: GB/T 29293-2012

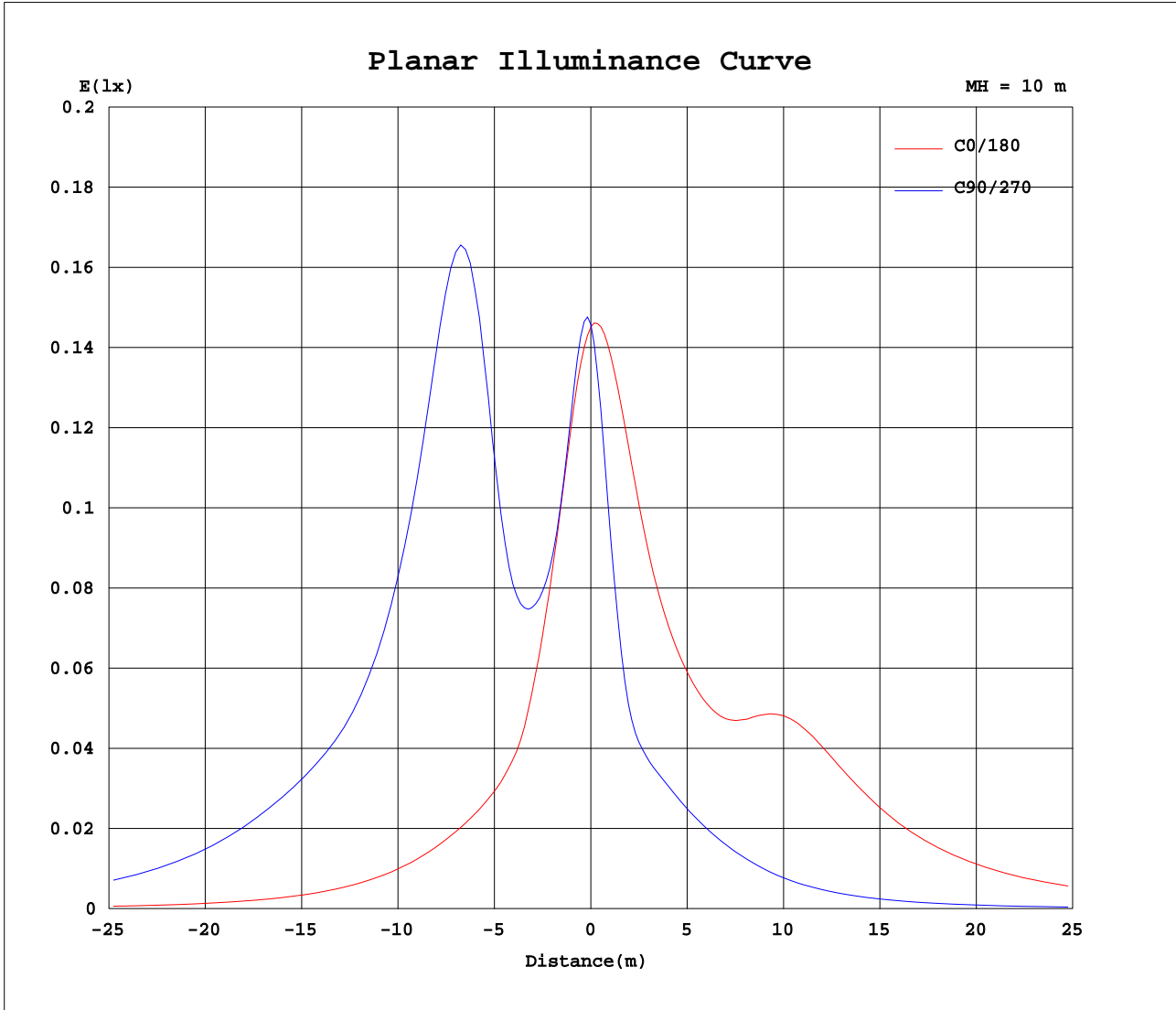
C Range: 0 - 360DEG
 C Interval: 15.0DEG
 Test Speed: HIGH
 Temperature:25.3DEG
 Operators:
 Test Date:2020-05-23

γ Range: 0 - 180DEG
 γ Interval: 1.0DEG
 Test System:EVERFINE GO-2000B_V1 SYSTEM V2.0.291
 Humidity:65.0%
 Test Distance:7.500m [K=1.0000]
 Remarks:



EVERFINE GONIOPHOTOMETERS SYSTEM TEST REPORT

Planar Illuminance Curve



C Range: 0 - 360DEG
C Interval: 15.0DEG
Test Speed: HIGH
Temperature: 25.3DEG
Operators:
Test Date: 2020-05-23

γ Range: 0 - 180DEG
 γ Interval: 1.0DEG
Test System: EVERFINE GO-2000B_V1 SYSTEM V2.0.291
Humidity: 65.0%
Test Distance: 7.500m [K=1.0000]
Remarks:



EVERFINE GONIOPHOTOMETERS SYSTEM TEST REPORT

LUMINOUS DISTRIBUTION INTENSITY DATA

Test:U:119.9V I:0.0922A P:2.932W PF:0.2651 Lamp Flux:46.9682x1 lm		
NAME:	TYPE:	WEIGHT:
SPEC.:	DIM.:	SERIAL No.:
MFR.:	SUR.:	PROTECTION ANGLE:

Table--1

UNIT: cd

C(DEG) γ (DEG)	0	15	30	45	60	75	90	105	120	135	150	165	180	195	210	225	240	255	270
0	14.5	14.5	14.5	14.5	14.5	14.5	14.6	14.6	14.6	14.6	14.6	14.6	14.5	14.5	14.5	14.5	14.5	14.5	14.6
5	12.7	13.8	14.5	14.6	14.2	13.7	13.1	12.9	12.8	13.1	13.4	14.0	14.3	14.3	13.9	13.0	12.0	10.9	10.3
10	9.66	12.2	13.8	13.6	12.1	10.8	9.83	9.52	9.39	9.69	10.2	11.4	12.6	13.6	13.0	10.7	8.44	6.77	5.96
15	7.01	10.4	12.9	12.0	9.92	8.89	8.58	8.61	8.65	8.62	8.70	9.32	10.7	12.6	12.0	8.46	5.85	4.66	4.42
20	5.08	8.72	11.9	10.4	8.64	8.46	9.17	10.2	10.6	9.73	8.86	8.53	9.23	11.6	11.2	6.79	4.52	4.09	3.97
25	4.25	7.28	11.2	9.21	8.20	9.37	13.3	17.8	19.7	15.8	11.4	8.76	8.40	10.6	10.5	5.52	4.00	3.74	3.60
30	3.83	6.08	10.6	8.42	8.45	13.1	22.7	30.4	32.4	26.9	18.8	10.9	8.11	9.58	9.78	4.43	3.63	3.39	3.25
35	3.50	4.93	10.0	7.92	9.90	20.2	29.8	34.6	34.6	32.0	26.8	16.3	8.63	8.69	8.98	3.85	3.29	3.05	2.91
40	3.17	4.07	9.27	7.64	13.5	25.6	28.1	28.9	28.1	27.6	27.4	22.5	10.6	7.95	7.93	3.38	2.93	2.70	2.56
45	2.81	3.43	8.29	7.70	17.6	24.7	23.4	23.1	22.6	22.2	23.2	23.8	13.6	7.41	6.67	2.97	2.56	2.34	2.18
50	2.45	2.97	7.13	8.26	19.0	21.2	20.1	20.7	21.3	19.9	19.8	20.8	15.4	7.21	5.49	2.58	2.20	1.98	1.84
55	2.09	2.55	5.99	8.94	17.4	18.4	19.0	20.8	21.6	19.8	18.2	17.8	15.1	7.17	4.47	2.19	1.84	1.65	1.51
60	1.74	2.14	5.01	9.13	15.2	16.5	18.2	19.1	19.4	18.4	17.2	15.5	13.7	7.06	3.56	1.81	1.49	1.34	1.22
65	1.40	1.73	4.13	8.85	13.0	14.8	15.7	15.5	15.4	15.1	14.8	13.7	11.9	6.79	2.74	1.44	1.17	1.06	0.95
70	1.09	1.35	3.36	8.20	11.2	12.4	12.2	11.7	11.6	11.5	11.5	11.3	10.1	6.33	1.98	1.08	0.88	0.81	0.73
75	0.81	0.97	2.64	7.02	9.07	9.31	9.62	9.09	8.62	8.65	8.79	8.46	8.18	5.50	1.30	0.76	0.64	0.61	0.54
80	0.57	0.65	1.92	5.40	6.63	7.20	6.60	5.45	4.92	5.26	6.03	6.36	6.00	4.25	0.72	0.52	0.46	0.45	0.40
85	0.42	0.41	1.15	4.05	5.14	4.92	4.27	3.44	3.10	3.48	4.05	4.06	4.05	3.24	0.35	0.37	0.34	0.37	0.31
90	0.33	0.27	0.74	2.70	3.12	3.12	2.85	2.47	2.07	2.02	1.83	1.45	1.26	0.80	0.20	0.26	0.25	0.29	0.27
95	0.23	0.19	0.19	0.26	0.45	0.70	0.84	0.89	0.87	0.77	0.76	0.85	1.46	1.19	0.69	0.58	0.36	0.28	0.28
100	0.31	0.20	0.28	0.60	0.97	0.78	0.53	0.45	0.54	0.52	1.31	1.46	1.25	0.86	0.74	0.71	0.70	0.56	0.45
105	0.18	0.20	0.28	0.16	0.30	1.04	1.27	1.14	0.17	0.66	0.18	0.17	0.26	0.18	0.24	0.19	0.61	0.64	0.46
110	0.52	0.27	0.33	0.37	0.15	0.16	0.16	0.19	0.26	0.91	0.42	0.32	0.61	0.20	0.31	0.19	0.20	0.22	0.23
115	0.54	0.39	0.32	0.50	0.69	0.58	0.60	1.09	1.19	0.65	0.19	0.40	0.86	0.39	0.30	0.55	0.47	0.27	0.28
120	0.54	0.39	0.28	0.35	0.66	0.81	0.98	1.02	0.82	0.16	0.19	0.47	0.81	0.44	0.26	0.45	0.62	0.74	0.78
125	0.54	0.34	0.28	0.22	0.41	0.55	0.68	0.58	0.34	0.16	0.20	0.54	0.72	0.48	0.33	0.28	0.45	0.59	0.61
130	0.47	0.29	0.28	0.19	0.25	0.27	0.32	0.23	0.18	0.16	0.23	0.55	0.61	0.49	0.40	0.25	0.26	0.39	0.39
135	0.42	0.29	0.28	0.19	0.21	0.17	0.20	0.16	0.17	0.17	0.23	0.47	0.52	0.49	0.41	0.25	0.23	0.27	0.25
140	0.40	0.28	0.25	0.19	0.20	0.17	0.18	0.16	0.16	0.15	0.22	0.35	0.50	0.43	0.39	0.23	0.23	0.26	0.25
145	0.29	0.23	0.21	0.19	0.19	0.17	0.18	0.16	0.15	0.15	0.18	0.25	0.26	0.31	0.22	0.23	0.23	0.25	0.25
150	0.25	0.22	0.20	0.20	0.18	0.18	0.17	0.16	0.15	0.15	0.15	0.15	0.20	0.22	0.21	0.22	0.23	0.25	0.25
155	0.24	0.23	0.21	0.20	0.18	0.18	0.17	0.17	0.15	0.16	0.15	0.16	0.20	0.21	0.22	0.22	0.23	0.25	0.27
160	0.24	0.36	0.29	0.25	0.18	0.23	0.22	0.18	0.17	0.17	0.15	0.16	0.23	0.23	0.29	0.22	0.23	0.25	0.31
165	0.24	0.34	0.29	0.22	0.19	0.22	0.22	0.22	0.22	0.17	0.15	0.18	0.27	0.28	0.29	0.27	0.23	0.29	0.28
170	0.24	0.22	0.22	0.21	0.19	0.19	0.19	0.18	0.20	0.17	0.16	0.17	0.22	0.23	0.22	0.23	0.21	0.26	0.22
175	0.23	0.22	0.22	0.22	0.19	0.19	0.19	0.19	0.18	0.17	0.16	0.17	0.22	0.22	0.22	0.22	0.21	0.22	0.20
180	0.22	0.22	0.22	0.22	0.19	0.19	0.19	0.19	0.18	0.18	0.16	0.17	0.22	0.22	0.22	0.22	0.21	0.21	0.20

C Range: 0 - 360DEG
 C Interval: 15.0DEG
 Test Speed: HIGH
 Temperature:25.3DEG
 Operators:
 Test Date:2020-05-23

γ Range: 0 - 180DEG
 γ Interval: 1.0DEG
 Test System:EVERFINE GO-2000B_V1 SYSTEM V2.0.291
 Humidity:65.0%
 Test Distance:7.500m [K=1.0000]
 Remarks:



EVERFINE GONIOPHOTOMETERS SYSTEM TEST REPORT

LUMINOUS DISTRIBUTION INTENSITY DATA

Test:U:119.9V I:0.0922A P:2.932W PF:0.2651 Lamp Flux:46.9682x1 lm		
NAME:	TYPE:	WEIGHT:
SPEC.:	DIM.:	SERIAL No.:
MFR.:	SUR.:	PROTECTION ANGLE:

Table--2

UNIT: cd

C(DEG) γ (DEG)	285	300	315	330	345														
0	14.6	14.6	14.6	14.6	14.6														
5	9.77	9.90	10.0	10.8	11.6														
10	5.54	5.59	5.79	6.58	7.74														
15	4.29	4.29	4.36	4.59	5.13														
20	3.91	3.91	3.97	4.08	4.30														
25	3.54	3.54	3.61	3.74	3.93														
30	3.20	3.21	3.27	3.40	3.60														
35	2.87	2.87	2.94	3.06	3.26														
40	2.49	2.48	2.57	2.71	2.92														
45	2.12	2.12	2.20	2.34	2.58														
50	1.80	1.78	1.87	1.99	2.22														
55	1.49	1.47	1.56	1.66	1.88														
60	1.21	1.19	1.28	1.36	1.54														
65	0.96	0.94	1.02	1.08	1.25														
70	0.75	0.72	0.80	0.84	0.98														
75	0.57	0.54	0.60	0.64	0.74														
80	0.43	0.41	0.46	0.47	0.55														
85	0.33	0.29	0.35	0.35	0.42														
90	0.26	0.23	0.28	0.28	0.34														
95	0.24	0.24	0.24	0.22	0.25														
100	0.29	0.24	0.22	0.21	0.23														
105	0.31	0.23	0.22	0.23	0.20														
110	0.23	0.26	0.27	0.32	0.24														
115	0.37	0.49	0.28	0.24	0.26														
120	0.66	0.47	0.27	0.24	0.31														
125	0.58	0.38	0.26	0.24	0.40														
130	0.35	0.23	0.24	0.24	0.42														
135	0.27	0.23	0.24	0.24	0.42														
140	0.27	0.23	0.24	0.25	0.32														
145	0.27	0.23	0.22	0.18	0.25														
150	0.25	0.23	0.22	0.18	0.26														
155	0.24	0.23	0.22	0.18	0.21														
160	0.24	0.25	0.24	0.18	0.23														
165	0.27	0.23	0.26	0.18	0.22														
170	0.24	0.19	0.22	0.18	0.19														
175	0.22	0.19	0.20	0.18	0.18														
180	0.20	0.19	0.18	0.18	0.17														

C Range: 0 - 360DEG
 C Interval: 15.0DEG
 Test Speed: HIGH
 Temperature:25.3DEG
 Operators:
 Test Date:2020-05-23

γ Range: 0 - 180DEG
 γ Interval: 1.0DEG
 Test System:EVERFINE GO-2000B_V1 SYSTEM V2.0.291
 Humidity:65.0%
 Test Distance:7.500m [K=1.0000]
 Remarks: