

# LEDVANCE LAMPS

## DUALescent™ DULUX® L LED TT5 UL TYPE (A+B) LAMPS

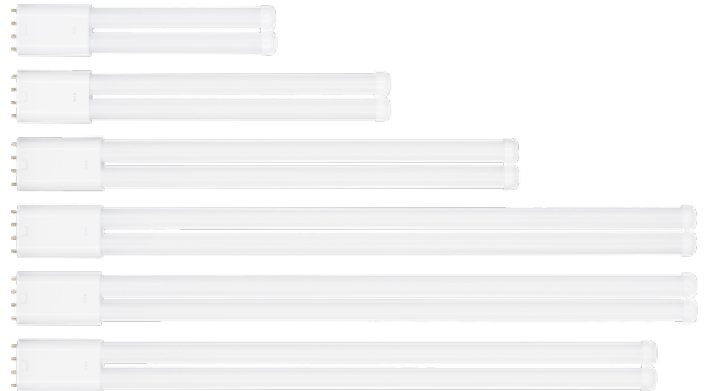
### LEDVANCE LAMP SPECIFICATION DATA

Catalog #	Comments
Project	
Type	
Prepared by	

### APPLICATION

LED DULUX lamps are an ideal solution to replace traditional fluorescent in a wide range of general lighting applications. DUALescent provides flexibility for the distributor or contractor with one lamp to satisfy either operation with a ballast or line voltage, for greater job site flexibility. The ballast compatible feature provides simple plug-n-play installation whereas the ballast free feature eliminates incompatibility and ballast maintenance when lamps are directly connected to line voltage. These lamps can be integrated into a traditional florescent form factor providing much longer life and much more energy savings compared to its fluorescent counterparts.

When installing these lamps in UL Type B mode, the UL rating of the existing fixture is not voided (even when it is electrically modified) since our DUALescent TT5 lamp is UL Classified (as a luminaire conversion retrofit kit) under UL standard 1598C. UL 1598C is the standard covering LED retrofits intended for an existing UL rated fixture. Since the user is retrofitting with a UL1598C classified LED kit, the installer must follow the installation instructions included with the lamps for the modified fixture to retain its UL rating.



### BENEFITS & FEATURES

- Replace traditional fluorescent lamps of 18W, 24W, 36W, 40W and 55W
- Available Length/Wattage: 9"/8W, 12.9"/10W, 16.6"/16W, 22.4"/17W, 22.5"/22W and 21.5"/24W
- CCT color temperature: 3000K/3500K/4100K/5000K
- CRI > 80
- Beam angle: 160° with frosted glass optics with shatter resistant PET coating
- No warm-up time, instant-on with full light output and stable lamp-to-lamp color
- No UV emission
- Suitable for dry and damp locations
- Can be used in enclosed luminaire (with diffuser or lens only, not gasketed)



## ORDERING GUIDE

LED	XX	TT5DL	FG	D	8	XX	AB
LED	WATTAGE	LAMP TYPE	COLOR/FINISH	DIMMING	CRI	COLOR TEMP	OPERATION
LED = LED Lamp	8 = 8 Watts 10 = 10 Watts 16 = 16 Watts 17 = 17 Watts 22 = 22 Watts 24 = 24 Watts	TT5DL = TT5 DULUX L	FG = Frosted Glass	DIM = Dimmable	8 = 82	30 = 3000K 35 = 3500K 41 = 4100K 50 = 5000K	AB = UL Type (A+B)

## ORDERING INFORMATION

ITEM #	ORDERING ABBREVIATION	LENGTH	REPLACES	LAMP POWER (W)	INPUT VOLTAGE (V)	LIFE (L70) HOURS	CCT	TYPICAL LUMEN (LM)	CRI	DIMMABLE	POWER FACTOR	BULB FINISH	DLC
42213	LED8TT5DLFGP830AB	9"	FT18DL	8	120-277V or Ballast	50,000	3000	900	82	-	>0.90	Frosted Glass with PET	N/A
42214	LED8TT5DLFGP835AB	9"	FT18DL	8	120-277V or Ballast	50,000	3500	900	82	-	>0.90	Frosted Glass with PET	N/A
42215	LED8TT5DLFGP841AB	9"	FT18DL	8	120-277V or Ballast	50,000	4100	1000	82	-	>0.90	Frosted Glass with PET	N/A
42216	LED8TT5DLFGP850AB	9"	FT18DL	8	120-277V or Ballast	50,000	5000	1000	82	-	>0.90	Frosted Glass with PET	N/A
42217	LED10TT5DLFGP830AB	12.9"	FT24DL	10	120-277V or Ballast	50,000	3000	1200	82	-	>0.90	Frosted Glass with PET	N/A
42218	LED10TT5DLFGP835AB	12.9"	FT24DL	10	120-277V or Ballast	50,000	3500	1200	82	-	>0.90	Frosted Glass with PET	N/A
42219	LED10TT5DLFGP841AB	12.9"	FT24DL	10	120-277V or Ballast	50,000	4100	1300	82	-	>0.90	Frosted Glass with PET	N/A
42220	LED10TT5DLFGP850AB	12.9"	FT24DL	10	120-277V or Ballast	50,000	5000	1300	82	-	>0.90	Frosted Glass with PET	N/A
42221	LED16TT5DLFGP830AB	16.6"	FT36DL	16	120-277V or Ballast	50,000	3000	2000	82	-	>0.90	Frosted Glass with PET	N/A
42222	LED16TT5DLFGP835AB	16.6"	FT36DL	16	120-277V or Ballast	50,000	3500	2000	82	-	>0.90	Frosted Glass with PET	N/A
42223	LED16TT5DLFGP841AB	16.6"	FT36DL	16	120-277V or Ballast	50,000	4100	2100	82	-	>0.90	Frosted Glass with PET	N/A
42224	LED16TT5DLFGP850AB	16.6"	FT36DL	16	120-277V or Ballast	50,000	5000	2100	82	-	>0.90	Frosted Glass with PET	N/A
42225	LED17TT5DLFGPDIM830AB	22.4"	FT40DL	17	120-277V or Ballast	50,000	3000	2150	82	Yes	>0.90	Frosted Glass with PET	v5.1
42226	LED17TT5DLFGPDIM835AB	22.4"	FT40DL	17	120-277V or Ballast	50,000	3500	2150	82	Yes	>0.90	Frosted Glass with PET	v5.1
42227	LED17TT5DLFGPDIM841AB	22.4"	FT40DL	17	120-277V or Ballast	50,000	4100	2300	82	Yes	>0.90	Frosted Glass with PET	v5.1
42228	LED17TT5DLFGPDIM850AB	22.4"	FT40DL	17	120-277V or Ballast	50,000	5000	2300	82	Yes	>0.90	Frosted Glass with PET	v5.1
42229	LED22TT5DLFGPDIM830AB	22.5"	FT50DL/ FT55DL	22	120-277V or Ballast	50,000	3000	2900	82	Yes	>0.91	Frosted Glass with PET	v5.1
42230	LED22TT5DLFGPDIM835AB	22.5"	FT50DL/ FT55DL	22	120-277V or Ballast	50,000	3500	2900	82	Yes	>0.92	Frosted Glass with PET	v5.1
42231	LED22TT5DLFGPDIM841AB	22.5"	FT50DL/ FT55DL	22	120-277V or Ballast	50,000	4100	3100	82	Yes	>0.93	Frosted Glass with PET	v5.1
42232	LED22TT5DLFGPDIM850AB	22.5"	FT50DL/ FT55DL	22	120-277V or Ballast	50,000	5000	3100	82	Yes	>0.94	Frosted Glass with PET	v5.1
42233	LED24TT5DLFGPDIM830AB	21.1"	FT55DL	24	120-277V or Ballast	50,000	3000	3200	82	Yes	>0.95	Frosted Glass with PET	v5.1
42234	LED24TT5DLFGPDIM835AB	21.1"	FT55DL	24	120-277V or Ballast	50,000	3500	3200	82	Yes	>0.96	Frosted Glass with PET	v5.1
42235	LED24TT5DLFGPDIM841AB	21.1"	FT55DL	24	120-277V or Ballast	50,000	4100	3400	82	Yes	>0.97	Frosted Glass with PET	v5.1
42236	LED24TT5DLFGPDIM850AB	21.1"	FT55DL	24	120-277V or Ballast	50,000	5000	3400	82	Yes	>0.98	Frosted Glass with PET	v5.1

## ELECTRICAL

- Operate with compatible electronic ballasts and directly on 120-277V
- Power Factor > 0.9
- THD < 20%
- UL Type B: 17W, 22W and 24W lamps are dimmable down to 10% with 120V phase cut dimmers (see the dimmer list below)
- UL Type A: 17W, 22W and 24W lamps dimmable with 0-10V dimmers and compatible dimming ballasts (refer to ballast compatibility guide)
- Compatible with LEDVANCE EMBB (75740) when operating at UL Type B mode (17W & below)

## RATED LIFE

- 50,000hrs (L<sub>70</sub>)

## OPERATING TEMPERATURE

- -4°F to +113°F (-20°C to +45°C)

## MAXIMUM CASE TEMPERATURE

- 158°F (70°C)

## WARRANTY

- Lamps are covered by a 5-year limited warranty. For additional details, please visit [www.ledvanceUS.com/warranty](http://www.ledvanceUS.com/warranty)
- NLB Trusted Warranty Program

## INSTALLATION

- Please refer to the Installation manual included inside the packaging and the applications information listed below for more information

## CERTIFICATIONS & LISTINGS

- cULus (UL1598c and UL1993, CSA C22.2)
- NSF (ANSI 2) — Food Equipment
- FCC & ICES-005 (for Canada)
- RoHS
- DLC 5.1 for 17W or higher
- Lead Free
- Mercury Free

## SPECIFICATIONS AND LIGHTING DATA

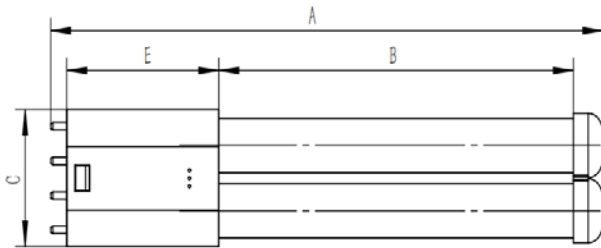
LAMP	BALLAST	SYSTEM CURRENT (AMPS) 120/277V	SYSTEM POWER (W)	SYSTEM LUMEN (LM) @4100K	SYSTEM EFFICACY (LM/W)	NO. OF LAMPS
LED8TT5DLFGP8XXAB as Type A	QTP 2X26 CF/UNV DM	0.193/0.083	23	1950	84	2
LED10TT5DLFGP8XXAB as Type A	QTP 2X26 CF/UNV DM	0.216/0.0935	26	2500	97	2
LED16TT5DLFGP8XXAB as Type A	GEC242-MVPS-3W	0.318/0.138	38	4300	113	2
LED17TT5DLFGPDIM8XXAB as Type A	GEC240MAX-A	0.318/0.138	31	4300	139	2
LED22TT5DLFGPDIM8XXAB as Type A	QTP2X54T5HO UNV PSN	0.391/0.170	47	5996	128	2
LED24TT5DLFGPDIM8XXAB as Type A	QTP2X54T5HO UNV PSN	0.412/0.1765	49	6300	129	2
LED8TT5DLFGP8XXAB as Type B	N/A	0.013/0.058	16	2000	125	2
LED10TT5DLFGP8XXAB as Type B	N/A	0.165/0.073	20	2600	129	2
LED16TT5DLFGP8XXAB as Type B	N/A	0.247/0.107	30	3950	133	2
LED17TT5DLFGPDIM8XXAB as Type B	N/A	0.267/0.116	32	5200	163	2
LED22TT5DLFGPDIM8XXAB as Type B	N/A	0.35/0.15	42	6700	160	2
LED24TT5DLFGPDIM8XXAB as Type B	N/A	0.4/0.174	48	7500	155	2

## WATTAGE COMPARISON

ITEM #	TRADITIONAL SOURCE	TRADITIONAL SYSTEM WATTAGE	LED SYSTEM	LED SYSTEM WATTAGE (TYPE B)	ENERGY SAVINGS
42213 / 42214 / 42215 / 42216	FT18DL	22	LED8TT5DLFGP8XXAB	8	64%
42217 / 42218 / 42219 / 42220	FT24DL	26	LED10TT5DLFGP8XXAB	10	62%
42221 / 42222 / 42223 / 42224	FT36DL	38	LED16TT5DLFGP8XXAB	16	58%
42225 / 42226 / 42227 / 42228	FT40DL	42	LED17TT5DLFGPDIM8XXAB	17	60%
42229 / 42230 / 42231 / 42232	FT50DL	54	LED22TT5DLFGPDIM8XXAB	22	59%
42233 / 42234 / 42235 / 42236	FT55DL	58	LED24TT5DLFGPDIM8XXAB	24	59%

## PHYSICAL INFORMATION

LAMP DESCRIPTION	A (INCH/MM)	B (INCH/MM)	C MAX (INCH/MM)	D MAX (INCH/MM)	E MAX (INCH/MM)	WEIGHT (LB/G)
LED8TT5DLFGP8XXAB	8.86±0.8/225±2	5.69±0.8/144.5±2	1.73/43.9	0.93/23.7	2.45/62.3	0.18/82
LED10TT5DLFGP8XXAB	12.60±0.8/320±2	9.43±0.8/239.5±2	1.73/43.9	0.93/23.7	2.45/62.3	0.23/106
LED16TT5DLFGP8XXAB	16.34±0.8/415±2	12.85±0.8/326.5±2	1.73/43.9	0.93/23.7	2.77/70.3	0.30/138
LED17TT5DLFGPDIM8XXAB	22.44±0.8/570±2	18.96±0.8/481.5±2	1.73/43.9	0.93/23.7	2.77/70.3	0.39/177
LED22TT5DLFGPDIM8XXAB	22.44±0.8/570±2	18.96±0.8/481.5±2	1.73/43.9	0.93/23.7	2.77/70.3	0.48/219
LED24TT5DLFGPDIM8XXAB	21.06±0.8/535±2	17.59±0.8/446.5±2	1.73/43.9	0.93/23.7	2.77/70.3	0.46/209



## DIMMER COMPATIBILITY

### UL Type A

0-10V Compatible dimmers with compatible ballasts

DIMMER	MODEL
Lutron	NTSTV-DV
Lutron	NSTV
Lutron	DVTV
Lutron	DVSTV
Leviton	DS710
Leviton	IP710
Legrand	H4FBL3PW

### UL Type B

Dimming is only wired to 120V input voltage

DIMMER	MODEL
Lutron	DVLEV – 303P
Lutron	SLEV – 303P
Lutron	CTLEV – 303P
Lutron	NTLEV – 300
Lutron	NTLEV – 600

LEDVANCE LLC

181 Ballardvale Street, Suite 203

Wilmington, MA 01887 USA

Phone: 1-800-LIGHTBULB (1-800-544-4828)

www.ledvanceUS.com

LEDVANCE is a registered trademark.  
All other trademarks are those of their respective owners.  
Specifications subject to change without notice.



SCAN TO FOLLOW US  
ON SOCIAL MEDIA